

**MONTHLY REPORT  
AUGUST 2022**

**LOWER ALLEN TOWNSHIP**

**Department of Public Safety**



|   |              |              |
|---|--------------|--------------|
| <b>Director</b>                               | <b>Pages</b> | <b>3</b>     |
| <b>Police Captain</b>                         | <b>Pages</b> | <b>4-12</b>  |
| <b>Support Services Lieutenant</b>            | <b>Pages</b> | <b>13-18</b> |
| <b>Police Operational Services Lieutenant</b> | <b>Pages</b> | <b>19-22</b> |
| <b>EMS</b>                                    | <b>Pages</b> | <b>23-35</b> |
| <b>Fire Captain (Fire/PSOs)</b>               | <b>Pages</b> | <b>36-41</b> |

During August, the COVID-19 pandemic continued to decline in numbers and acuity. The acuity impact stabilized to the point that we are seeing reports of infected staff member, non-job related, but the severity has continued to be reduced. In general, positive cases were less impactful and persons infected were less sick in general. No changes to personal protective device (PPE) requirements changed however and maximum precaution continued to be urged. All staff was kept up to date with statistics on infection rates and hospitalizations. The Emergency Health Services Council continued with their COVID briefings via an online presentation that remained at every two weeks instead of weekly due to the case declines. There continued to be fluctuations in the daily case counts resulting in the rates not being consistent.

Captain Deaven and I continued to monitor the PEMA (PA Emergency Management Agency), FEMA, EHSF, and any county EMA releases daily. Staff continues strict protocols with personal protective equipment and sanitation. To date, public safety has had no work-related COVID infections of staff despite numerous contacts and work-related exposure. This fact clearly illustrates our ongoing diligent proactive preventive measures work and the professionalism of the staff.

The highlights of August included:

August 1<sup>st</sup> – Conducted part-time EMT interview with Capt. Deaven and Donna Paul.

August 2<sup>nd</sup> – Attended virtual Hazard Mitigation Plan training hosted by Cumberland County.

August 7<sup>th</sup> – Participated in National Night Out festivities at CLA. It was great to be back in the community doing outreach.

August 12<sup>th</sup> – Attended PowerDMS training taught by Capt. Crone.

August 22<sup>nd</sup> – Conducted interviews with replacement Public Safety Officer candidates along with Chief Black, Chief Murdoch, Capt. Wirth, Donna Paul, and me. Four candidates were interviewed in person and the fifth was scheduled for a Zoom interview.

August 30<sup>th</sup> – Worked on PowerPoint draft for the presentation Retired Chief Fernandez from Miami and I are scheduled to do at the International Association Chiefs of Police (IACP) conference in October in Dallas. The presentation is the introduction of the TMA AVS-01 ANSI standard to improve consistent relay of alarm information to 911 centers and responding officers.

Throughout the month I attended various meetings internally and externally concerning administrative and operational topics for law enforcement, fire, emergency medical services, emergency management, and Township activities.

Respectfully Submitted,

*David L. Holl*

Director, Department of Public Safety

*(July report, followed by August).*

**DEPARTMENT HEAD:**

Throughout the month of July, Captain Crone attended Command and Staff meetings, a Board of Commissioners Meeting, a Department Head Meeting, a Captains' Meeting, and a Public Safety policy planning meeting.

Captain Crone also attended a PPAC meeting and, while attending the Pennsylvania Chiefs of Police Conference, participated in a PLEAC (Pennsylvania Law Enforcement Accreditation Commission) Commission Committee meeting. The Standards Committee review of the program's sample assessment for revision was worked on during the month as well.

Police officer candidates were interviewed (those who successfully met the criteria to move on from the most recent consortium). Those candidates have been submitted for background checks.

In anticipation of the likely-opening school resource officer (SRO) position, a selection process was held involving our command staff, a representative from the school district, and a representative from the high school. Officer Michael Lightner prevailed and will be attending training for the position. Draft MOU (Memorandum of Understanding) work has begun in anticipation of this appointment.

National Night Out made a triumphant return this year. The event was well attended and well-received by all who were able to join us. Many thanks to organizations, internal and external, who set up displays, offered materials, made donations and organized the activities that contributed to the success. Also, a big thanks to Dianna Knisley for the pre-event work that went into corralling the vendors and participants both ahead of the event and on the big day.

The patrol officer of the month for July is Officer Fitzkee: During the month of July, Ofc Fitzkee was busy as usual. He wrote up 50 IRF's including 14 UCR (Uniform Crime Reporting) cases, 8 of which, (57%) were closed in some form of arrest. He also made 18 traffic stops. The highlight of July for Ofc Fitzkee was when he recovered a stolen handgun. While the perpetrator fled from the scene on foot, he was apprehended within a few days due to the diligence and hard work of Ofc Fitzkee and his squad. Congratulations, Officer Fitzkee.

**NALOXONE**

There were no Naloxone administrations by police personnel in Lower Allen Township in July.

**UCR (Uniform Crime Reporting) Crime Statistics**

*Unavailable from UCR website at time of writing.*

## ARRESTS:

These are the charges for which arrests have been made in the month of July

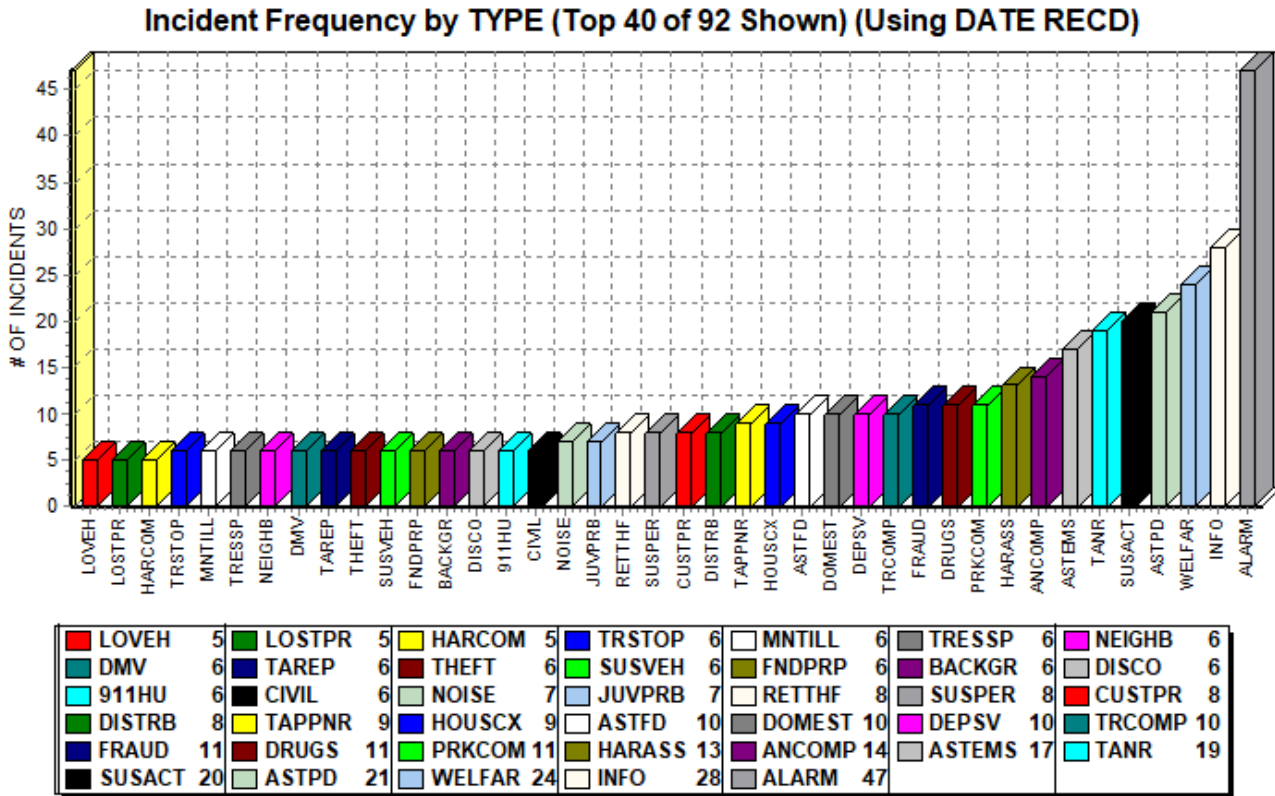
| Lower Allen Township Arrests Report      |       |   |
|--|-------|---|
| ARRESTS BY CHARGE                        |       |   |
| UNLAWFUL POSSESSION OF A CONTROLLED SUB  | ----- | 1 |
| UNSWORN FALSIFICATION TO AUTHORITIES: S  | ----- | 1 |
| AGG/ASSAULT SER INJ                      | ----- | 1 |
| CARELESS DRIVING                         | ----- | 2 |
| CARRY FIREARM WITHOUT A LICENSE          | ----- | 1 |
| CRIMINAL MISCHIEF PERSONAL PROPERTY      | ----- | 2 |
| CRIMINAL TRESPASS BUILDING               | ----- | 1 |
| CURFEW                                   | ----- | 2 |
| DISORDERLY CONDUCT                       | ----- | 4 |
| DRIVERS REQUIRED TO BE LICENSED          | ----- | 1 |
| DRIVING WHILE OPERATING PRIVILEGE IS SUS | ----- | 1 |
| DUI                                      | ----- | 1 |
| DUI HIGH RATE OF ALCOHOL                 | ----- | 1 |
| DUI HIGHEST RATE                         | ----- | 1 |
| FAIL/DRIVE WITHIN LANE                   | ----- | 1 |
| FAIL/STOP/EXHIB/UC, ETC                  | ----- | 1 |
| FALSE IDENTIFICATION TO LAW ENFORCEMENT  | ----- | 1 |
| FALSE REPORTS TO LAW ENFORCEMENT         | ----- | 1 |
| FLIGHT TO AVOID APPREHENSION, TRIAL OR P | ----- | 1 |
| HARASSMENT PHYS/CONTACT                  | ----- | 1 |
| HARBORING A DANGEROUS DOG                | ----- | 1 |
| Offense defined - A person commits the o | ----- | 1 |
| POSSESSION OF A SMALL AMOUNT OF MARIJUAN | ----- | 2 |
| POSSESSION OF DRUG PARAPHERNALIA         | ----- | 4 |
| PUBLIC DRUNKENESS                        | ----- | 2 |
| PURCHASE, CONSUMPTION, POSSESSION        | ----- | 2 |
| RESISTING ARREST OR OTHER LAW ENFORCEMEN | ----- | 1 |
| SCATTERING RUBBISH                       | ----- | 1 |
| SERIOUS BODILY INJURY                    | ----- | 1 |
| SIMPLE ASSAULT/PHYSICAL                  | ----- | 1 |
| STOP SIGN VIOLATION                      | ----- | 1 |
| TERRORISTIC THREATS                      | ----- | 1 |
| THEFT BY DECEPTION FALSE IMPRESSION      | ----- | 1 |
| THEFT OF PROPERTY LOST                   | ----- | 1 |
| THEFT UNLAWFUL TAKING IMMOVABLE          | ----- | 1 |
| THEFT UNLAWFUL TAKING MOVABLE            | ----- | 3 |

## MONTHLY TOP 40 INCIDENT COUNT BY TYPE and SELECTED OFFICER LOG FIGURES

Below is the Top-40 calls for service chart for the month. This, coupled with the monthly totals in other charts, creates a more succinct picture of police department activity. The Selected Officer Log Figures chart that follows the Incident Count charts are items that consume patrol resources but are not documented in incident reports.

**2022**

**JULY**





**Selected Officer Log Figures:**

| Selected Officer Log Figures |                         |       |       |
|------------------------------|-------------------------|-------|-------|
| July                         |                         | 2022  | 2021  |
|                              |                         | July  | July  |
|                              |                         | Total | Total |
|                              |                         |       |       |
|                              |                         |       |       |
| CCOURT                       | County Court            | 0     | 3     |
| DCCCTR                       | Detail, CCC Traffic     | 12    | 10    |
| DCHSEC                       | Detail, Church Security | 5     | 4     |
| DCLATR                       | Detail, CLA Traffic     | 24    | 17    |
| DEPSV                        | Department Services     | 10    | 9     |
| DETSPV                       | Detailed Special Event  | 3     | 0     |
| DIRPAT                       | Direct Patrol           | 146   | 197   |
| DLACP                        | Detail, LACP            | 4     | 4     |
| DMALLS                       | Detail, Mall Security   | 16    | 17    |
| MDJCRT                       | MDJ Hearing             | 1     | 0     |
| PRKCHX                       | Park Check              | 25    | 21    |
|                              |                         |       |       |
| Total                        |                         | 246   | 282   |

**RECORDS FUNCTION:**

Records staff continues the normal daily routine of organizing, filing, and distributing paperwork as appropriate, as well as fielding calls for service over the phone and handling or directing walk-up customers.

RTK/Report Disseminations - 17

Warning/Citation Entries - 207

Case Folders Created – 92

Complaints Reviewed - 538

Arrest Reports Entered/Filed – 59

## **DEPARTMENT HEAD:**

Throughout the month of August, Captain Crone attended Command and Staff meetings, a Board of Commissioners Meeting, a Department Head Meeting, a Captains' Meeting, some personnel-related meetings, a meeting with UMHC management, and a Public Safety policy planning meeting.

Captain Crone also continued the PLEAC Standards Committee review of the program's sample assessment for revision.

Background checks continue for sworn candidates. School Resource Officer MOU work was continued.

The patrol officer of the month for August is Officer Rennie. During the month of August, Ofc Rennie logged 11 UCR calls, 6 of which resulted in arrests. Some of those cases were also multiple arrests.

His proactive patrol resulted in the recovery of a stolen vehicle on 8/21/22. In the vehicle was a loaded gun, not to be possessed by the occupants and is being investigated as a weapon used in a shooting in Dauphin County. On 8/17/22, Ofc Rennie made a stop where he discovered forged documents, and the suspect was of interest to ICE as being undocumented. Ofc Rennie also self-initiated a traffic stop for forged inspections. The driver was arrested for a robbery warrant out of Upper Allen Township. Congratulations, Officer Rennie.

## **NALOXONE**

There were no Naloxone administrations by police personnel in Lower Allen Township in August.



# UCR (Uniform Crime Reporting) Crime Statistics



## Year to Date Comparison Report

Printed On: 09/12/2022

Beginning Date: 01/01/2022

Ending Date:  
08/31/2022

Page 1 of 1

### YTD Offense and Clearance Comparison

Agency: LOWER ALLEN TOWNSHIP

Offense : All

| Classification Of Offense                               | This Year to Date  |                 |                        | Last Year to Date |                     |                        | Rate Per 100,000 Population | Offense Percent change | Offense Cleared Percent |
|---|--------------------|-----------------|------------------------|-------------------|---------------------|------------------------|-----------------------------|------------------------|-------------------------|
|   | Number Of Offenses | Cleared Offense | Offense Clearance Rate | Last Year Offense | Last Year Clearance | Offense Clearance Rate |                             |                        |                         |
| <b>Murder/NonNegligent Homicide(Total)</b>              | 0                  | 1               | 0.00%                  | 0                 | 1                   | 0.00%                  | 0.00                        | 0.00%                  | 0.00%                   |
| Manslaughter by Negligence(Total)                       | 0                  | 0               | 0.00%                  | 0                 | 1                   | 0.00%                  | 0.00                        | 0.00%                  | 0.00%                   |
| <b>Rape(Total)</b>                                      | 1                  | 2               | 200.00%                | 4                 | 3                   | 75.00%                 | 100000.00                   | -75.00%                | 166.67%                 |
| Rape  | 1                  | 2               | 200.00%                | 4                 | 2                   | 50.00%                 | 100000.00                   | -75.00%                | 300.00%                 |
| Attempted Rape  | 0                  | 0               | 0.00%                  | 0                 | 1                   | 0.00%                  | 0.00                        | 0.00%                  | 0.00%                   |
| <b>Robbery(Total)</b>                                   | 3                  | 3               | 100.00%                | 2                 | 1                   | 50.00%                 | 300000.00                   | 50.00%                 | 100.00%                 |
| Robbery - Firearm                                       | 3                  | 2               | 66.67%                 | 1                 | 0                   | 0.00%                  | 300000.00                   | 200.00%                | 0.00%                   |
| Robbery - Knife or Cutting Instrument                   | 0                  | 0               | 0.00%                  | 0                 | 0                   | 0.00%                  | 0.00                        | 0.00%                  | 0.00%                   |
| Robbery - Other Dangerous Weapon                        | 0                  | 0               | 0.00%                  | 0                 | 0                   | 0.00%                  | 0.00                        | 0.00%                  | 0.00%                   |
| Robbery - StrongArm(Hands,Fists,Feet,etc)               | 0                  | 1               | 0.00%                  | 1                 | 1                   | 100.00%                | 0.00                        | -100.00%               | -100.00%                |
| <b>Assault(Total)</b>                                   | 8                  | 7               | 87.50%                 | 7                 | 5                   | 71.43%                 | 800000.00                   | 14.29%                 | 22.50%                  |
| Assault - Firearm                                       | 0                  | 0               | 0.00%                  | 1                 | 1                   | 100.00%                | 0.00                        | -100.00%               | -100.00%                |
| Assault - Knife or Cutting Instrument                   | 1                  | 1               | 100.00%                | 1                 | 1                   | 100.00%                | 100000.00                   | 0.00%                  | 0.00%                   |
| Assault - Other Dangerous Weapon                        | 0                  | 0               | 0.00%                  | 0                 | 0                   | 0.00%                  | 0.00                        | 0.00%                  | 0.00%                   |
| Assault - StrongArm(Hands,Fists,Feet,etc)               | 7                  | 6               | 85.71%                 | 5                 | 3                   | 60.00%                 | 700000.00                   | 40.00%                 | 42.85%                  |
| <b>Burglary(Total)</b>                                  | 15                 | 12              | 80.00%                 | 16                | 9                   | 56.25%                 | 1500000.00                  | -6.25%                 | 42.22%                  |
| Burglary - Forcible Entry                               | 4                  | 5               | 125.00%                | 9                 | 4                   | 44.44%                 | 400000.00                   | -55.56%                | 181.28%                 |
| Burglary - Unlawful Entry(No Force)                     | 10                 | 7               | 70.00%                 | 6                 | 4                   | 66.67%                 | 1000000.00                  | 66.67%                 | 4.99%                   |
| Burglary - Attempted Forcible Entry                     | 1                  | 0               | 0.00%                  | 1                 | 1                   | 100.00%                | 100000.00                   | 0.00%                  | -100.00%                |
| <b>Car Theft(Total) - Including Motor Vehicle Theft</b> | 149                | 93              | 62.42%                 | 118               | 82                  | 69.49%                 | 14900000.00                 | 26.27%                 | -10.17%                 |
| <b>Motor Vehicle Theft(Total)</b>                       | 6                  | 3               | 50.00%                 | 4                 | 2                   | 50.00%                 | 600000.00                   | 50.00%                 | 0.00%                   |
| Motor Vehicle Theft - Autos                             | 5                  | 3               | 60.00%                 | 4                 | 2                   | 50.00%                 | 500000.00                   | 25.00%                 | 20.00%                  |
| Motor Vehicle Theft - Trucks and Buses                  | 1                  | 0               | 0.00%                  | 0                 | 0                   | 0.00%                  | 100000.00                   | 0.00%                  | 0.00%                   |
| Motor Vehicle Theft - Other Vehicles                    | 0                  | 0               | 0.00%                  | 0                 | 0                   | 0.00%                  | 0.00                        | 0.00%                  | 0.00%                   |
| <b>Human Trafficking</b>                                | 0                  | 0               | 0.00%                  | 0                 | 0                   | 0.00%                  | 0.00                        | 0.00%                  | 0.00%                   |
| <b>Arson</b>  | 0                  | 0               | 0.00%                  | 0                 | 0                   | 0.00%                  | 0.00                        | 0.00%                  | 0.00%                   |
| <b>Total Part I Offenses</b>                            | 182                | 121             | 66.48%                 | 151               | 104                 | 68.87%                 | 18200000.00                 | 20.53%                 | -3.47%                  |
| <b>Assault - Other(Simple, Not Aggravated)</b>          | 55                 | 50              | 90.91%                 | 65                | 54                  | 83.08%                 | 5500000.00                  | -15.38%                | 9.42%                   |
| <b>Forgery and Counterfeiting</b>                       | 6                  | 1               | 16.67%                 | 8                 | 4                   | 50.00%                 | 600000.00                   | -25.00%                | -66.66%                 |
| <b>Fraud</b>  | 181                | 91              | 50.28%                 | 238               | 110                 | 46.22%                 | 18100000.00                 | -23.95%                | 8.78%                   |
| <b>Embezzlement</b>                                     | 0                  | 0               | 0.00%                  | 4                 | 3                   | 75.00%                 | 0.00                        | -100.00%               | -100.00%                |
| <b>Stolen Property; buying, receiving, disposing</b>    | 8                  | 8               | 100.00%                | 3                 | 3                   | 100.00%                | 800000.00                   | 166.67%                | 0.00%                   |
| <b>Vandalism</b>  | 35                 | 15              | 42.86%                 | 19                | 9                   | 47.37%                 | 3500000.00                  | 84.21%                 | -9.52%                  |
| <b>Weapons; Carrying, Possessing, etc.</b>              | 8                  | 7               | 87.50%                 | 5                 | 5                   | 100.00%                | 800000.00                   | 60.00%                 | -12.50%                 |
| <b>Prostitution and Commercialized Vice</b>             | 0                  | 0               | 0.00%                  | 0                 | 0                   | 0.00%                  | 0.00                        | 0.00%                  | 0.00%                   |
| <b>Sex Offenses (Except Line 2 and 16)</b>              | 13                 | 11              | 84.62%                 | 18                | 10                  | 55.56%                 | 1300000.00                  | -27.78%                | 52.30%                  |
| <b>Drug Abuse Violations(Total)</b>                     | 72                 | 74              | 102.78%                | 54                | 53                  | 98.15%                 | 7200000.00                  | 33.33%                 | 4.72%                   |
| <b>Sale/Manufacturing SubTotal</b>                      | 9                  | 9               | 100.00%                | 3                 | 3                   | 100.00%                | 900000.00                   | 200.00%                | 0.00%                   |
| Opium - Cocaine   | 3                  | 3               | 100.00%                | 2                 | 2                   | 100.00%                | 300000.00                   | 50.00%                 | 0.00%                   |
| Marijuana   | 2                  | 2               | 100.00%                | 1                 | 1                   | 100.00%                | 200000.00                   | 100.00%                | 0.00%                   |
| Synthetic   | 0                  | 0               | 0.00%                  | 0                 | 0                   | 0.00%                  | 0.00                        | 0.00%                  | 0.00%                   |
| Other   | 4                  | 4               | 100.00%                | 0                 | 0                   | 0.00%                  | 400000.00                   | 0.00%                  | 0.00%                   |
| <b>Possession SubTotal</b>                              | 63                 | 65              | 103.17%                | 51                | 50                  | 98.04%                 | 6300000.00                  | 23.53%                 | 5.23%                   |
| Opium - Cocaine   | 3                  | 4               | 133.33%                | 1                 | 2                   | 200.00%                | 300000.00                   | 200.00%                | -33.34%                 |
| Marijuana   | 52                 | 54              | 103.85%                | 45                | 44                  | 97.78%                 | 5200000.00                  | 15.56%                 | 6.21%                   |
| Synthetic   | 2                  | 3               | 150.00%                | 1                 | 1                   | 100.00%                | 200000.00                   | 100.00%                | 50.00%                  |
| Other   | 6                  | 4               | 66.67%                 | 4                 | 3                   | 75.00%                 | 600000.00                   | 50.00%                 | -11.11%                 |
| <b>Gambling(Total)</b>                                  | 0                  | 0               | 0.00%                  | 0                 | 0                   | 0.00%                  | 0.00                        | 0.00%                  | 0.00%                   |
| Book Making   | 0                  | 0               | 0.00%                  | 0                 | 0                   | 0.00%                  | 0.00                        | 0.00%                  | 0.00%                   |
| Numbers, Etc  | 0                  | 0               | 0.00%                  | 0                 | 0                   | 0.00%                  | 0.00                        | 0.00%                  | 0.00%                   |
| Other   | 0                  | 0               | 0.00%                  | 0                 | 0                   | 0.00%                  | 0.00                        | 0.00%                  | 0.00%                   |
| <b>Offenses Against The Family and Children</b>         | 1                  | 1               | 100.00%                | 1                 | 0                   | 0.00%                  | 100000.00                   | 0.00%                  | 0.00%                   |
| <b>Driving Under The Influence</b>                      | 45                 | 45              | 100.00%                | 30                | 27                  | 90.00%                 | 4500000.00                  | 50.00%                 | 11.11%                  |
| <b>Liquor Laws</b>                                      | 5                  | 4               | 80.00%                 | 2                 | 2                   | 100.00%                | 500000.00                   | 150.00%                | -20.00%                 |
| <b>Drunkenness</b>                                      | 9                  | 9               | 100.00%                | 13                | 13                  | 100.00%                | 900000.00                   | -30.77%                | 0.00%                   |
| <b>Disorderly Conduct</b>                               | 41                 | 30              | 73.17%                 | 25                | 24                  | 96.00%                 | 4100000.00                  | 64.00%                 | -23.78%                 |
| <b>Vagrancy</b>   | 0                  | 0               | 0.00%                  | 0                 | 0                   | 0.00%                  | 0.00                        | 0.00%                  | 0.00%                   |
| <b>All Other Offenses (Except Traffic)</b>              | 51                 | 45              | 88.24%                 | 51                | 52                  | 101.96%                | 5100000.00                  | 0.00%                  | -13.46%                 |
| <b>Total Part II</b>                                    | 530                | 391             | 73.77%                 | 536               | 369                 | 68.84%                 | 53000000.00                 | -1.12%                 | 7.16%                   |

## ARRESTS:

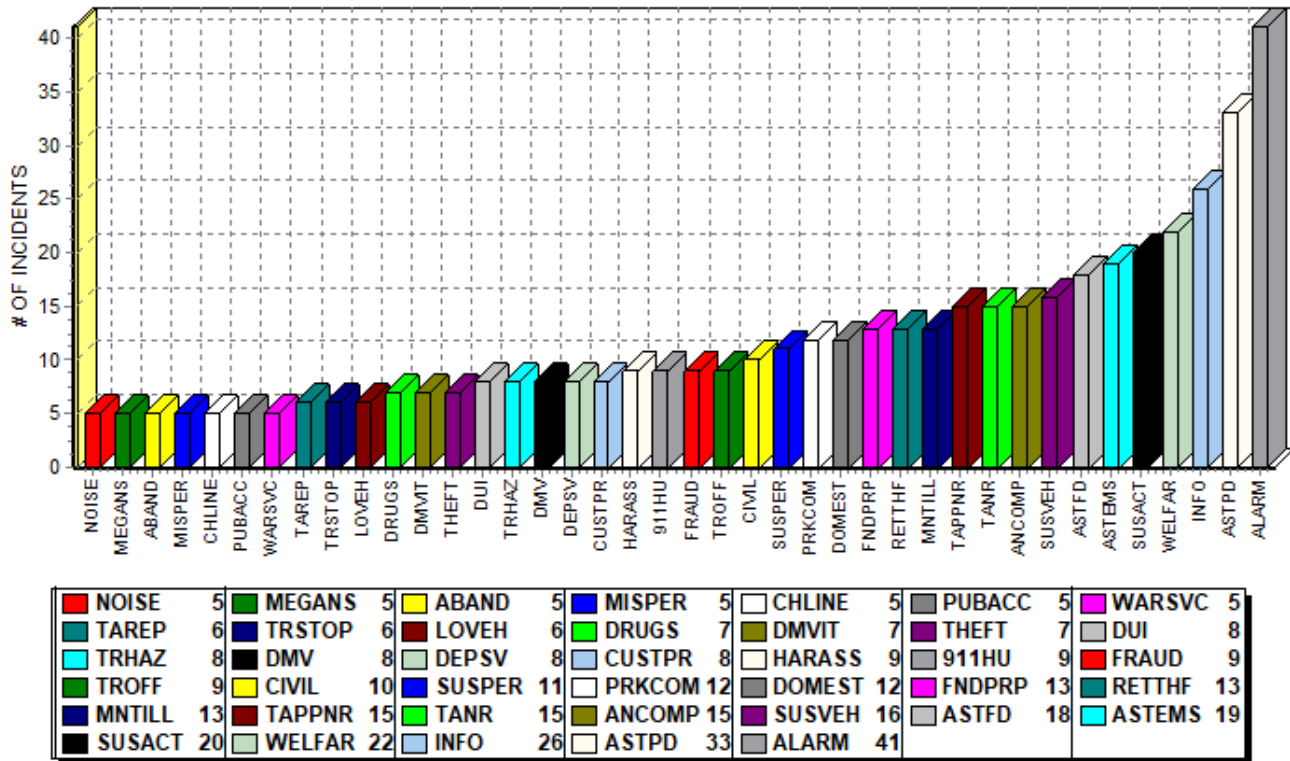
These are the charges for which arrests have been made in the month of August:

| Lower Allen Township Arrests Report      |       |   |
|--|-------|---|
| ARRESTS BY CHARGE                        |       |   |
| UNLAWFUL POSSESSION OF A CONTROLLED SUB  | ----- | 2 |
| 1543. DRIVING WHILE OPERATING PRIVILEGE  | ----- | 3 |
| ACCESS DEVICE FRAUD/UNAUTHORIZED USE     | ----- | 1 |
| AGGRAVATED ASSAULT WEAPON                | ----- | 1 |
| CARELESS DRIVING                         | ----- | 1 |
| CARRY FIREARM WITH OUT A LICENSE         | ----- | 2 |
| CRIMINAL MISCHIEF PERSONAL PROPERTY      | ----- | 1 |
| DISORDERLY CONDUCT                       | ----- | 4 |
| DRIVERS REQUIRED TO BE LICENSED          | ----- | 1 |
| DUI                                      | ----- | 4 |
| FAIL/DRIVE WITHIN LANE                   | ----- | 1 |
| FALSE IDENTIFICATION TO LAW ENFORCEMENT  | ----- | 1 |
| HARASSMENT PHYS/CONTACT                  | ----- | 2 |
| IDENTITY THEFT                           | ----- | 1 |
| OBEDIENCE TO TRAFFIC CONTROL DEVICES     | ----- | 1 |
| PAVC 3802(a)(1) Driving under the influe | ----- | 1 |
| PERIODS FOR REQUIRING LIGHTED LAMPS      | ----- | 1 |
| POSS/INSTRU/CRIME W/INT                  | ----- | 1 |
| POSSESSION OF A SMALL AMOUNT OF MARIJUAN | ----- | 3 |
| POSSESSION OF DRUG PARAPHERNALIA         | ----- | 5 |
| PROHIBITED OFFENSIVE WEAPONS             | ----- | 1 |
| PUBLIC DRUNKENESS                        | ----- | 1 |
| PURCHASE, CONSUMPTION, POSSESSION        | ----- | 1 |
| RECEIVING STOLEN PROPERTY                | ----- | 1 |
| REQUIRED POSITION AND METHOD OF TURNING: | ----- | 1 |
| RETAIL THEFT POSSESSION                  | ----- | 2 |
| RETAIL THEFT UNDER-RING                  | ----- | 2 |
| THEFT BY DECEPTION FALSE IMPRESSION      | ----- | 1 |
| THEFT UNLAWFUL TAKING MOVABLE            | ----- | 1 |

## MONTHLY TOP 40 INCIDENT COUNT BY TYPE and SELECTED OFFICER LOG FIGURES

Below is the Top-40 calls for service chart for the month. This, coupled with the monthly totals in other charts, creates a more succinct picture of police department activity. The Selected Officer Log Figures chart that follows the Incident Count charts are items that consume patrol resources but are not documented in incident reports.

**Incident Frequency by TYPE (Top 40 of 90 Shown) (Using DATE RECD)**



**Selected Officer Log Figures:**

| Selected Officer Log Figures |                         |        |  |        |
|------------------------------|-------------------------|--------|--|--------|
| August                       |                         | 2022   |  | 2021   |
|                              |                         | August |  | August |
|                              |                         | Total  |  | Total  |
|                              |                         |        |  |        |
|                              |                         |        |  |        |
| CCOURT                       | County Court            | 1      |  | 1      |
| DCCCTR                       | Detail, CCC Traffic     | 8      |  | 11     |
| DCHSEC                       | Detail, Church Security | 2      |  | 1      |
| DCLATR                       | Detail, CLA Traffic     | 15     |  | 22     |
| DEPSV                        | Department Services     | 6      |  | 11     |
| DETSPV                       | Detailed Special Event  | 19     |  | 14     |
| DIRPAT                       | Direct Patrol           | 181    |  | 130    |
| DLACP                        | Detail, LACP            | 4      |  | 2      |
| DMALLS                       | Detail, Mall Security   | 13     |  | 5      |
| MDJCRT                       | MDJ Hearing             | 5      |  | 4      |
| PRKCHX                       | Park Check              | 18     |  | 6      |
|                              |                         |        |  |        |
| Total                        |                         | 272    |  | 207    |

**RECORDS FUNCTION:**

Records staff continues the normal daily routine of organizing, filing, and distributing paperwork as appropriate, as well as fielding calls for service over the phone and handling or directing walk-up customers. Staff traded off vacation weeks through the month, picking up extra hours when the others were off, in order to accommodate.

RTK/Report Disseminations - 23

Warning/Citation Entries - 232

Case Folders Created – 92

Complaints Reviewed - 579

Arrest Reports Entered/Filed – 56

***Respectfully submitted,***



**Capt. Leon G. Crone, Jr.**  
**Police Captain**

The following is a list of duties performed by me during the month of August 2022.

For the month of August, a new potential Community Service Officer, (CSO), was interviewed at the Township building for potential employment. Candidate Dalton Swartz was interviewed, and a background packet was given to him to complete. The packet was assigned to Corporal Scarlato to complete. To the date and time of this report, no further contact from Swartz was received.

Background packets for potential police officer hires were handed out and assigned to different investigators. Corporal Tamanosky, who had been on light duty for a portion of August, was assigned the traditional research and initial background work. He completed what he could, and the backgrounds were assigned to different officers for follow up. Four (4) backgrounds were given to four different officers.

The Lisburn Festival was held between 10 August 2022 and 13 August 2022. I assisted in the set-up of the traffic cones in the field and with the tear down of the cones at the end of the festival. I also spent time at the festival on Friday and Saturday nights as part of an effort to maintain order. No major incidents were experienced during the festival. I give all the credit to the Community Service Officer program for the successful event. They all performed well and kept the motoring public safe.

I addressed an issue that was experienced in getting video from the Watchguard EL3 server, (Evidence Library 3). The EL3 Server is the older server that was used prior to the implementation of the Body Worn Camera (BWC), program. Video from that server was not available to review or copy for court. I worked with 3E to create what they called a “bridge” to the program and now getting information from the old server is possible.

I made an appointment and met with a young lad at the end of the month who aspires to become a police detective. I spoke to him about the profession and told him what to expect. I provided a tour of the facility to both the young lad and his mother. I invited him to come to watch an academy PT class, Cumberland County Consortium, as well as to apply for a position as a Community Service Officer, (CSO), if he so desired. The tour included a tour of the lab, building and grounds, as well as the evidence shed and vehicles.

I assisted in the transport of all vehicles to and from Rabolds Service Center for the speedometer testing to be completed on each vehicle. At the end of the day, I returned the invoice for payment to Dianna Knisley and requested that the invoice be paid. All current vehicles in the fleet had their speedometer checked.

I worked to schedule training for Community Service Officer (CSO), Bixler. CSO Bixler has completed a few shifts prior to this date but has not yet completed her initial training. I worked with other CSO's as well as with police officers to get her scheduled for the remaining of her training. This will continue into September.

Early on this month, I worked with Lt. Foltz to ensure that the schedules for the pending football games were posted for overtime. This included home games for Cedar Cliff High School, Redland High School, as well as Trinity High School. Game postings put in the roll call room for officers to sign up and work the games.

Worked as a liaison between the department and the director of school security director Tom Ryan on a case involving a young lad who accessed school grounds without permission. I arranged a discussion between school staff and police officers investigating the case. I requested that officers get on the same page as the school security director.

I assisted Evidence Technician Ickler with various projects during this month. They included work on several patrol vehicles, the Watchguard System, and other related projects.

Evidence Technician Ickler and I met with Don Erb, owner and operator of Tactical Wear LLC. The plan is to use this business as the primary supplier of most if not all required equipment and uniforms. We met with Erb and spoke with Erb about getting all accounts turned over to his attention. Work will continue with this in September with possible external vest covers being purchased through him.

Participated with the department in National Night Out in early August, (August 2). My assignment was to be at the Welcome/Recruitment tent and to speak to potential employees. Lt. Foltz and I remained for the duration of the event.

#### **Evidence Custodian:**

|          |   |
|----------|---|
| 08/01/22 | Request for Evidence PLH 1823 LA-21-02902               |
| 08/01/22 | Emptied Rx Drop Box                                     |
| 08/01/22 | 3E training class completed                             |
| 08/04/22 | Request for Evidence PLH 1823 LA-22-01074               |
| 08/04/22 | Request for Evidence PLH 1823 LA-22-04047               |
| 08/05/22 | Request video DA's Office Tracey White 1825 LA-22-01188 |
| 08/15/22 | Emptied Rx Drop Box                                     |
| 08/17/22 | Request for photographs PLH 1821 LA-22-03741            |
| 08/17/22 | Request for Evidence PLH 1823 LA-20-04047               |
| 08/17/22 | Property Return to Owner LA-20-00783                    |
| 08/22/22 | Emptied Rx Drop Box                                     |
| 08/22/22 | ETrace LA-22-04214 pistol from traffic stop 1814        |
| 08/25/22 | Completed BEAST and delivered gun to PSP LA-22-04214    |
| 08/25/22 | Drugs delivered to CC Lab 1863 LA-22-04171              |
| 08/29/22 | Emptied Rx Drop Box                                     |

#### **Evidence Technician:**

|          |   |
|----------|---|
| 08/09/22 | Photographed Autopsy LA-22-03853 Pending Toxicology Results |
|----------|---|

#### **Vehicle Maintenance:**

|          |  |
|----------|--|
| 08/01/22 | Car 10 Moyer Communications – install cables for WG side cameras         |
| 08/08/22 | Car 08 Twp. Garage – driver's side headlight repair – bad wiring harness |
| 08/10/22 | Car 10 LATPD – replaced Harris microphone                                |
| 08/11/22 | Car 11 Twp. Garage – State Inspection                                    |
| 08/11/22 | Car 02 Twp. Garage – Coolant hoses replacement and oil cooler            |
| 08/12/22 | Car 16 Twp. Garage – service   |
| 08/12/22 | All Patrol Vehicles had Speedometer certification completed              |
| 08/12/22 | Car 13 Twp. Garage – service   |
| 08/15/22 | Car 02 L. B. Smith – replace dr. front axel                              |
| 08/16/22 | Car 01 Moyer Communication – Replace rear camera and cable               |
| 08/16/22 | Car 04 Moyer Communication – rear camera mounter upside down -repaired   |

|          |   |
|----------|---|
| 08/16/22 | Car 05 Moyer Communications – replaced master relay                           |
| 08/16/22 | Car 10 Moyer Communications – Install side camera cables. No 6-camera display |
| 08/18/22 | Car 06 Twp. Garage =check transmission & loose wire hanging under vehicle     |
| 08/22/22 | Car 04 Twp. Garage – check Engine Light On – O2 sensor needed                 |
| 08/22/22 | Car 10 Moyer Radio – replace PA Mic & Adjust gain of PA (08/23)               |
| 08/22/22 | Car 10 Twp. Garage – reset change oil dash light                              |
| 08/22/22 | Car 10 LATPD – replaced blown siren fuse                                      |

#### **Quarter Master**

|          |   |
|----------|---|
| 08/05/22 | Returned UIS printer back to Spex Forensics                             |
| 08/10/22 | Sent PO to Moyer Radio for upfit and replacement of equipment for Car 7 |
| 08/23/22 | Ordered two (2) Belly Chains and two (2) over sized shackles            |
| 08/25/22 | Sample Crossing Guard Safety Vests returned to Big B's 1863 for Dianna  |
| 08/26/22 | Ordered three (3) CG Safety Vests from Tactical Wear                    |

#### **Projects:**

|          |   |
|----------|---|
| 08/01/22 | Sent TriTech Forensic an email re: quote for training 2023 budget |
| 08/02/22 | NNO set up and fingerprinting                                     |
| 08/03/22 | Clean up from NNO   |
| 08/04/22 | CSI Camp – Central Penn College                                   |
| 08/09/22 | Assisted Lt. Sentman and CSO Kirsch with set up for Lisburn Fair  |
| 08/10/22 | Gather up spare portables for Lisburn Fair                        |

#### **WatchGuard Issues:**

|          |   |
|----------|---|
| 08/01/22 | Ordered replacement V300 battery. Case Number 01849175                        |
| 08/05/22 | Ordered replacement cables for Car 10 side cameras                            |
| 08/11/22 | Ordered two replacement batteries for V300's. Case # 01880642                 |
| 08/16/22 | Ordered two (2) hard drives for WG server. Drives 7 & 8 bad                   |
| 08/17/22 | Hard Drives delivered – replaced hard drive 7 only Not working                |
| 08/19/22 | EL5 Server hard Drive # 8 now working   |
| 08/22/22 | Replacement Hard Drive for EL5 Servers slot 7 ordered                         |
| 08/23/22 | Ordered replacement DVR for Car 02. Case # 01918282                           |
| 08/24/22 | Sent three (3) defective hard drives back to Equis                            |
| 08/26/22 | Replaced and programed DVR in Car 2   |
| 08/30/22 | Sent back DVR2-029211 Car 2 to WG. Replacement DVR2-099091 FedEx 277160020187 |



|  |     |
|--|-----|
| Certified Letters Sent – Property Return | 0   |
| Crime Scene Call Out                     | 2   |
| COG Sale – Bicycles                      | 0   |
| Court Dispositions                       | 22  |
| Drug Destruction                         | 0   |
| Evidence Delivered to AG's Office        | 1   |
| Evidence Delivered to Cumb Co DA         | 1   |
| Cases Delivered to Cumb County Lab       | 2   |
| Cases Delivered to PSP Lab               | 1   |
| Evidence for Cumberland County Court     | 0   |
| Evidence for Preliminary Hearing         | 6   |
| Evidence Picked up from AG's Office      | 0   |
| Evidence Picked up from CC Lab           | 1   |
| Evidence Picked up from PSP Lab          | 2   |
| Evidence Processing                      | 1   |
| Evidence, Cases Purged from Evid Room    | 3   |
| Evidence/Property Returned to Owner      | 1   |
| Evidence Room Inspection                 | 0   |
| Evidence Requested for Review by Officer | 0   |
| Evidence Sent to U.S.S.S.                | 0   |
| Expungement Orders                       | 12  |
| Gun Destruction                          | 0   |
| Latent Print Cases                       | 1   |
| New Cases Submitted into Evidence Room   | 34  |
| Property Disposition Forms Returned      | 0   |
| Property Disposition Forms Sent          | 0   |
| Requests for DVD                         | 1   |
| Requests for Photographs                 | 0   |
| Unclaimed Property to State UCP          | 0   |
| Items Entered into Evidence Room         | 224 |
| Items Removed from Evidence Room         | 3   |
| Supplemental Reports                     | 15  |
| Assist Outside Agencies – Forensics      | 0   |
| Rx Drug Turned into County Lab - Dest    | 0   |
| PA State Police PICS Checks              | 0   |
| PA State Police PICS Checks - Denials    | 0   |
| CODY IRF                                 | 0   |
| Quartermaster Requests                   | 5   |
| Vehicle Maintenance Requests             | 18  |
| Fingerprint Applicant                    | 1   |
| <b>TOTAL REQUESTS: 1985</b>              |     |
| <b>EVIDENCE ROOM ITEM COUNT: 3880</b>    |     |

# Criminal Investigations Office

## Monthly Report

### August 2022

|                                    | MCNAIR | COFFEY | SCARLATO | CRAMER |
|------------------------------------|--------|--------|----------|--------|
| NEW INVESTIGATIONS - LEAD          | N/A    | 1      | 2        | 0      |
| NEW INVESTIGATIONS - ASSISTED      | N/A    | 0      | 0        | 1      |
| OPEN INVESTIGATIONS                | 2      | 8      | 11       | 6      |
| SEARCH WARRANTS CONDUCTED          | 0      | 3      | 6        | 0      |
| CELLULAR PHONE DOWNLOADED          | 0      | 1      | 1        | 0      |
| CRIMINAL ARRESTS                   | 0      | 1      | 1        | 0      |
| WARRANTS SERVED/SATISFIED          | 0      | 0      | 0        | 0      |
| PRISONER TRANSPORTS                | N/A    | N/A    | N/A      | N/A    |
| DRUG TASK FORCE ACTIVITY           | 8      | N/A    | N/A      | N/A    |
| TECHINICAL SERVICES INVESTIGATIONS | 0      | 0      | 0        | 0      |
| CALL OUTS                          | N/A    | 0      | 1        | N/A    |
| DEATH INVESTIGATIONS               | 0      | 0      | 0        | 0      |
| CHILDLINES RECEIVED                | N/A    | 1      | 2        | 0      |
| OPEN CHILDLINES                    | N/A    | 1      | 2        | 0      |
| MAGLOCLEN ENTRIES                  | N/A    | N/A    | N/A      | N/A    |
| MEGAN'S LAW OFFENDER               | 5      | N/A    | N/A      | N/A    |
| WEAPON OFFENSES                    | 0      | N/A    | N/A      | N/A    |

#### Arrest Summaries (Min: Investigator, Accused, Adult/Juv, Location, Crime):

On 08/21/2022 - Detective Corporal Scarlato arrested an 18 YOA male Corruption of Minors stemming from an incident in which he was caught engaging in sexual activity with a 13 YOA female juvenile in the bathroom stall at the Capital City Mall.

On 08/10/2022 - Detective Coffey arrested a 28 YOA male for an Attempted Homicide and lesser offenses stemming from an incident that occurred in February 2022.

#### Significant ON-GOING Investigations

| OFFENSE      | NUMBER OF CASES | OFFENSE         | NUMBER OF CASES |
|--------------|-----------------|-----------------|-----------------|
| Homicide     | 1               | Overdose Deaths | 3               |
| Burglary     | 7               | Thefts          | 6               |
| Sex Offenses | 2               | Fraud           | 4               |
| Robberies    | 2               | Child lines     | 4               |

**Other Significant Activity:**

On 08/22/2022 - Officer Cramer was reassigned from a Flex Officer back to a Patrol Squad to implement 5-man Patrol Squads

**Training:**

No Detectives attended training

**Photo Downloads: 15**

In August, the Lower Allen Twp. Police Dept. (LATPD) had 1,278 dispatched calls for service from Cumberland County Communications resulting in 579 reports. Of those 579 reports, 92 were UCR related.

During the month of August, LATPD made arrests or filed criminal charges on 38 individuals, issued 14 non-traffic citations, 66 traffic citations, 123 warnings, and 28 parking tickets.

There were 37 crashes reported to LATPD in August. Of those 37 crashes, 7 were reportable crashes and 30 were non-reportable crashes.

\*\*\*Cpl Claeys is still on light duty.

\*\*\*PPO Hughes successfully finished Field Training.

| <b>Monthly UCR Report- August</b> |  |                 |
|-----------------------------------|--|-----------------|
| <b>CRIME TYPE</b>                 |  | <b>How Many</b> |
| Robbery                           |  | 0               |
| Assault                           |  | 6               |
| Burglary                          |  | 1               |
| Retail Theft                      |  | 13              |
| Theft From Vehicle                |  | 4               |
| Theft                             |  | 6               |
| Stolen Vehicle (Recovered)        |  | 2               |
| Forgery                           |  | 0               |
| Fraud                             |  | 14              |
| Criminal Mischief                 |  | 5               |
| Weapon Offenses                   |  | 0               |
| Sex Offenses                      |  | 3               |
| Drugs                             |  | 6               |
| DUI                               |  | 9               |
| Underage Drinking                 |  | 0               |
| Public Drunkenness                |  | 1               |
| Harassment                        |  | 3               |
| Disorderly Conduct                |  | 3               |
| Other Crimes                      |  | 10              |
| Missing Person                    |  | 4               |
| Death Investigation               |  | 2               |
| Fire                              |  | 0               |
| Suicide Attempts                  |  | 0               |
| <b>TOTAL</b>                      |  | <b>92</b>       |



# Lower Allen Township PD DAILY INCIDENT COUNTS



8/1/2022 to 8/31/2022

| Day of Month Responses     | 01 | 02 | 03 | 04 | 05 | 06 | 07 | 08 | 09 | 10 | 11 | 12 | 13 | 14 | 15 | 16 | 17 | 18 | 19 | 20 | 21 | 22 | 23 | 24 | 25 | 26 | 27 | 28 | 29 | 30 | 31 | Total |
|----------------------------|----|----|----|----|----|----|----|----|----|----|----|----|----|----|----|----|----|----|----|----|----|----|----|----|----|----|----|----|----|----|----|-------|
| 911 HANG UP                | 0  | 0  | 0  | 0  | 2  | 0  | 0  | 0  | 0  | 0  | 0  | 0  | 1  | 1  | 1  | 0  | 0  | 0  | 1  | 1  | 0  | 0  | 0  | 0  | 0  | 0  | 0  | 2  | 0  | 0  | 0  | 9     |
| ABANDONED VEHICLE          | 1  | 0  | 0  | 0  | 0  | 0  | 0  | 0  | 0  | 0  | 1  | 0  | 0  | 0  | 0  | 2  | 0  | 0  | 0  | 0  | 0  | 0  | 0  | 0  | 0  | 0  | 1  | 0  | 0  | 0  | 0  | 5     |
| ALARM                      | 1  | 2  | 2  | 0  | 1  | 1  | 0  | 2  | 1  | 1  | 1  | 3  | 4  | 1  | 0  | 2  | 0  | 2  | 2  | 0  | 0  | 3  | 1  | 3  | 0  | 0  | 1  | 1  | 0  | 3  | 3  | 41    |
| ANIMAL COMPLAINT           | 1  | 1  | 1  | 0  | 0  | 1  | 1  | 1  | 0  | 3  | 1  | 0  | 1  | 0  | 0  | 0  | 0  | 0  | 0  | 1  | 0  | 0  | 0  | 1  | 0  | 0  | 0  | 0  | 1  | 0  | 1  | 15    |
| ANIMAL FOUND, DOG          | 0  | 0  | 0  | 0  | 0  | 0  | 0  | 0  | 0  | 0  | 0  | 0  | 0  | 1  | 1  | 0  | 0  | 0  | 0  | 0  | 0  | 0  | 0  | 0  | 0  | 0  | 0  | 0  | 0  | 0  | 0  | 2     |
| ANIMAL LOST                | 0  | 0  | 1  | 0  | 0  | 1  | 0  | 0  | 0  | 0  | 1  | 1  | 0  | 0  | 0  | 0  | 0  | 0  | 0  | 0  | 0  | 0  | 0  | 0  | 0  | 0  | 0  | 0  | 0  | 0  | 0  | 4     |
| ASSAULT, AGGRAVATED        | 0  | 0  | 0  | 0  | 0  | 0  | 0  | 0  | 0  | 0  | 0  | 0  | 0  | 0  | 0  | 0  | 0  | 0  | 0  | 0  | 0  | 1  | 0  | 0  | 0  | 0  | 0  | 0  | 0  | 0  | 0  | 1     |
| ASSAULT, DOMESTIC          | 0  | 0  | 0  | 0  | 0  | 0  | 0  | 0  | 0  | 0  | 0  | 0  | 0  | 0  | 0  | 0  | 0  | 0  | 1  | 0  | 0  | 0  | 0  | 0  | 0  | 1  | 0  | 0  | 0  | 1  | 0  | 3     |
| ASSAULT, SIMPLE            | 0  | 0  | 0  | 0  | 0  | 1  | 0  | 0  | 0  | 0  | 0  | 0  | 0  | 0  | 0  | 0  | 0  | 0  | 0  | 0  | 0  | 0  | 0  | 0  | 0  | 0  | 0  | 0  | 0  | 0  | 0  | 1     |
| ASSIST EMS                 | 1  | 0  | 1  | 0  | 1  | 0  | 1  | 1  | 0  | 0  | 0  | 2  | 1  | 1  | 0  | 0  | 0  | 0  | 2  | 0  | 3  | 0  | 1  | 0  | 2  | 0  | 0  | 1  | 1  | 0  | 0  | 19    |
| ASSIST FIRE DEPARTMENT     | 1  | 0  | 2  | 2  | 0  | 0  | 0  | 1  | 2  | 1  | 0  | 1  | 2  | 0  | 1  | 0  | 1  | 0  | 1  | 0  | 0  | 0  | 1  | 0  | 0  | 0  | 1  | 0  | 0  | 0  | 1  | 18    |
| ASSIST OTHER AGENCY        | 0  | 0  | 0  | 0  | 0  | 0  | 0  | 0  | 0  | 0  | 0  | 0  | 0  | 0  | 0  | 0  | 0  | 0  | 0  | 0  | 0  | 0  | 0  | 0  | 0  | 1  | 0  | 0  | 0  | 0  | 0  | 1     |
| ASSIST POLICE              | 0  | 3  | 1  | 1  | 2  | 2  | 0  | 2  | 0  | 1  | 2  | 0  | 2  | 0  | 2  | 1  | 1  | 0  | 2  | 1  | 1  | 0  | 1  | 0  | 2  | 0  | 1  | 3  | 2  | 0  | 0  | 33    |
| BACKGROUND CHECK (LOCAL)   | 0  | 1  | 0  | 0  | 0  | 0  | 0  | 0  | 1  | 0  | 0  | 0  | 0  | 0  | 0  | 1  | 0  | 0  | 0  | 0  | 0  | 0  | 0  | 0  | 0  | 0  | 0  | 0  | 0  | 0  | 0  | 3     |
| BAD CHECK                  | 0  | 0  | 0  | 0  | 0  | 0  | 0  | 0  | 0  | 0  | 0  | 0  | 0  | 0  | 1  | 0  | 0  | 0  | 0  | 0  | 0  | 0  | 0  | 0  | 0  | 0  | 0  | 0  | 0  | 0  | 0  | 1     |
| BURGLARY                   | 0  | 0  | 0  | 0  | 0  | 0  | 0  | 0  | 0  | 0  | 0  | 0  | 0  | 0  | 0  | 0  | 0  | 0  | 0  | 1  | 0  | 0  | 0  | 0  | 0  | 0  | 0  | 0  | 0  | 0  | 0  | 1     |
| CHECK AREA                 | 2  | 0  | 0  | 0  | 0  | 1  | 0  | 0  | 0  | 0  | 0  | 0  | 0  | 0  | 0  | 0  | 0  | 0  | 0  | 1  | 0  | 0  | 0  | 0  | 0  | 0  | 0  | 0  | 0  | 0  | 0  | 4     |
| CHILDLINE (NON-UCR) NOTICE | 1  | 1  | 0  | 1  | 0  | 0  | 0  | 1  | 0  | 0  | 0  | 0  | 0  | 0  | 0  | 0  | 0  | 0  | 0  | 0  | 0  | 0  | 0  | 1  | 0  | 0  | 0  | 0  | 0  | 0  | 0  | 5     |
| CIVIL                      | 0  | 0  | 0  | 2  | 0  | 2  | 0  | 0  | 0  | 0  | 0  | 0  | 0  | 0  | 1  | 1  | 0  | 0  | 0  | 0  | 0  | 0  | 1  | 0  | 1  | 1  | 0  | 0  | 1  | 0  | 0  | 10    |
| CRIMINAL MISCHIEF          | 0  | 0  | 0  | 0  | 0  | 1  | 0  | 0  | 1  | 0  | 0  | 0  | 0  | 0  | 0  | 0  | 1  | 0  | 0  | 0  | 1  | 0  | 0  | 0  | 0  | 0  | 0  | 0  | 0  | 0  | 0  | 4     |
| CURFEW                     | 0  | 0  | 0  | 0  | 0  | 1  | 0  | 0  | 0  | 0  | 0  | 1  | 0  | 0  | 0  | 0  | 0  | 0  | 0  | 0  | 0  | 0  | 0  | 0  | 0  | 0  | 0  | 0  | 0  | 0  | 0  | 2     |
| CHILD CUSTODY PROBLEM      | 0  | 0  | 0  | 0  | 0  | 0  | 0  | 0  | 0  | 0  | 0  | 0  | 0  | 0  | 0  | 0  | 0  | 0  | 0  | 0  | 0  | 0  | 0  | 0  | 0  | 0  | 1  | 0  | 0  | 0  | 0  | 1     |
| CUSTOMER PROBLEM           | 0  | 0  | 0  | 0  | 0  | 0  | 0  | 1  | 0  | 0  | 2  | 0  | 0  | 0  | 0  | 0  | 1  | 0  | 0  | 1  | 0  | 0  | 1  | 1  | 0  | 0  | 1  | 0  | 0  | 0  | 0  | 8     |
| DEATH INVESTIGATION        | 0  | 0  | 0  | 1  | 1  | 0  | 0  | 0  | 0  | 0  | 0  | 0  | 0  | 0  | 0  | 0  | 0  | 0  | 0  | 0  | 0  | 0  | 0  | 0  | 0  | 0  | 0  | 0  | 0  | 0  | 0  | 2     |
| DEPARTMENT SERVICES        | 0  | 0  | 0  | 0  | 0  | 0  | 0  | 2  | 0  | 1  | 1  | 0  | 0  | 0  | 0  | 0  | 0  | 0  | 0  | 0  | 1  | 0  | 0  | 0  | 0  | 0  | 0  | 1  | 1  | 1  | 1  | 8     |
| DETAILED SPECIAL EVENT     | 0  | 0  | 0  | 0  | 0  | 0  | 0  | 0  | 0  | 0  | 0  | 0  | 0  | 0  | 0  | 0  | 0  | 0  | 0  | 0  | 0  | 0  | 0  | 0  | 1  | 0  | 0  | 0  | 0  | 0  | 0  | 1     |







In August LATEMS personnel provided **2,550.00 hours of readiness and service** to the citizens of Lower Allen Township. In addition to the normal operational activities LATEMS participated in several community events.

LATEMS staff assisted LAPD with completing their required CPR and Basic First Aid Training. LATEMS staff participated in training with the Public Safety Officers when call volume allowed.

In August LATEMS participated in several outreach events within the community. This outreach involved partnering the Peyton Walker Foundation to promote hands-only CPR training for the community in conjunction with promoting the 4-minute city project.

### **National Night Out**



***Paramedic Chambers instructing a family in Hands only-CPR***



***Commissioner Nagy and his wife participating in Hands only CPR training***

## Lisburn Community Fire Company Festival



*EMT Hivner doing a blood pressure screening*



*EMT McClintock providing education on LATEMS*

## August 26, 2022, Rotary Club of Mechanicsburg North



On Thursday August 26, 2022, the Rotary Club of Mechanicsburg North held there monthly meeting in the EOC.

Captain Deaven presented on “The Business of EMS”

### ***Rotary Club President Dawn Sizer***

The 4-Minute City project is moving forward. The first training sessions will be conducted by Webinar and will begin in September.

Lower Allen Township EMS actively participates in state and regional EMS initiatives developing relationships and fostering partnerships to ensure the highest quality of pre-hospital care to the citizens of Lower Allen Township which demonstrates the excellent value of EMS to the citizens of Lower Allen Township. Captain Deaven actively participates in the Emergency Health Services Federation (EHSF), PA Bureau of EMS, Pennsylvania Emergency Health Services Council, Ambulance Association of Pennsylvania and Pennsylvania Fire and Emergency Services Institute and 911 commission meetings and education to ensure the continued development of the EMS system in Lower Allen Township.

LATEMS continues to deliver high quality, effective, efficient, and safe patient care directly to the side of every patient in need of help providing value for the citizens of Lower Allen Township. In August LATEMS touched the lives of **319 citizens.**

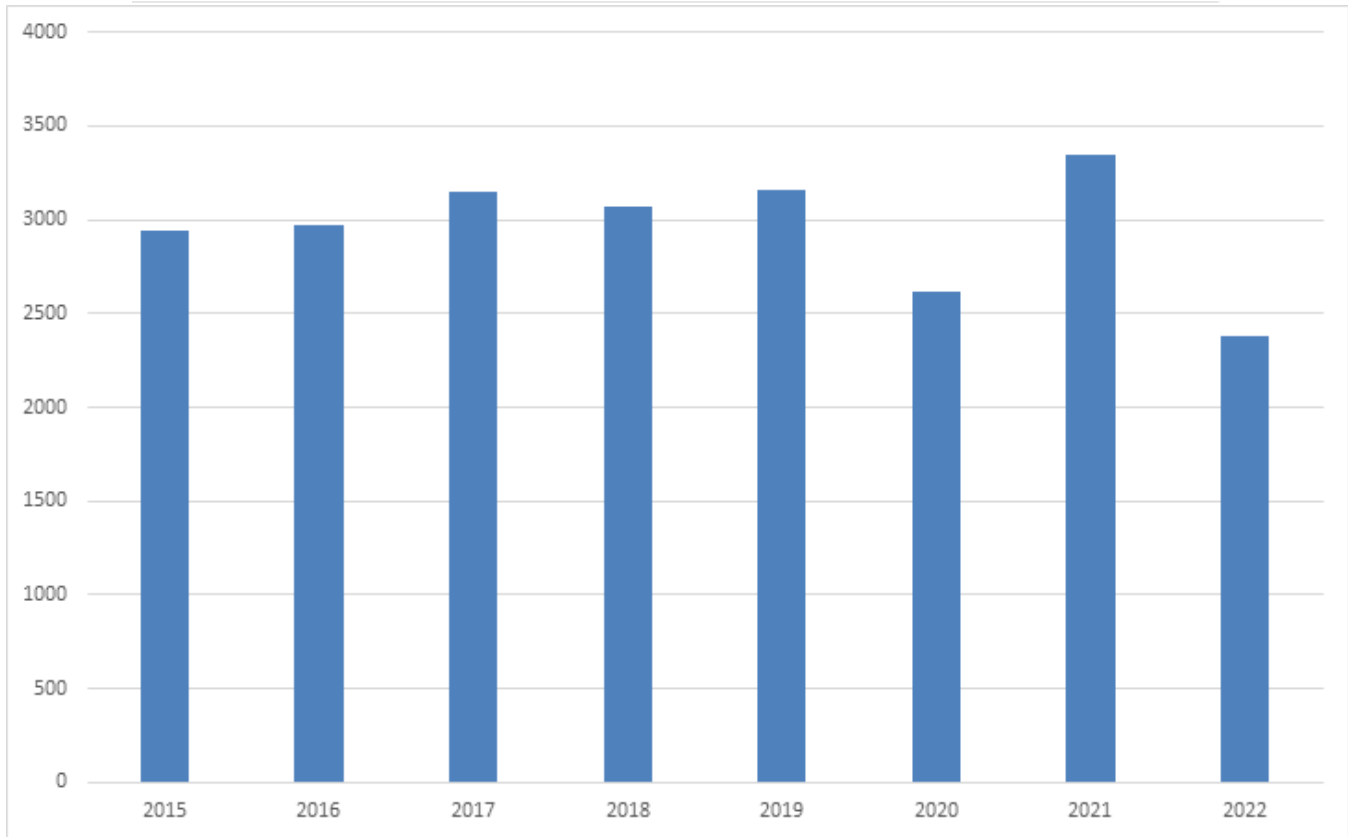


# Clinical proficiency data

National EMS Quality Measure 2.0 initiatives and National Highway Traffic Safety Administration quality measures These are national standards established to ensure the quality clinical care across the nations EMS systems. Participation is voluntary and demonstrates EMS agencies' commitment to excellence and ensuring EMS clinical care has value to patients.

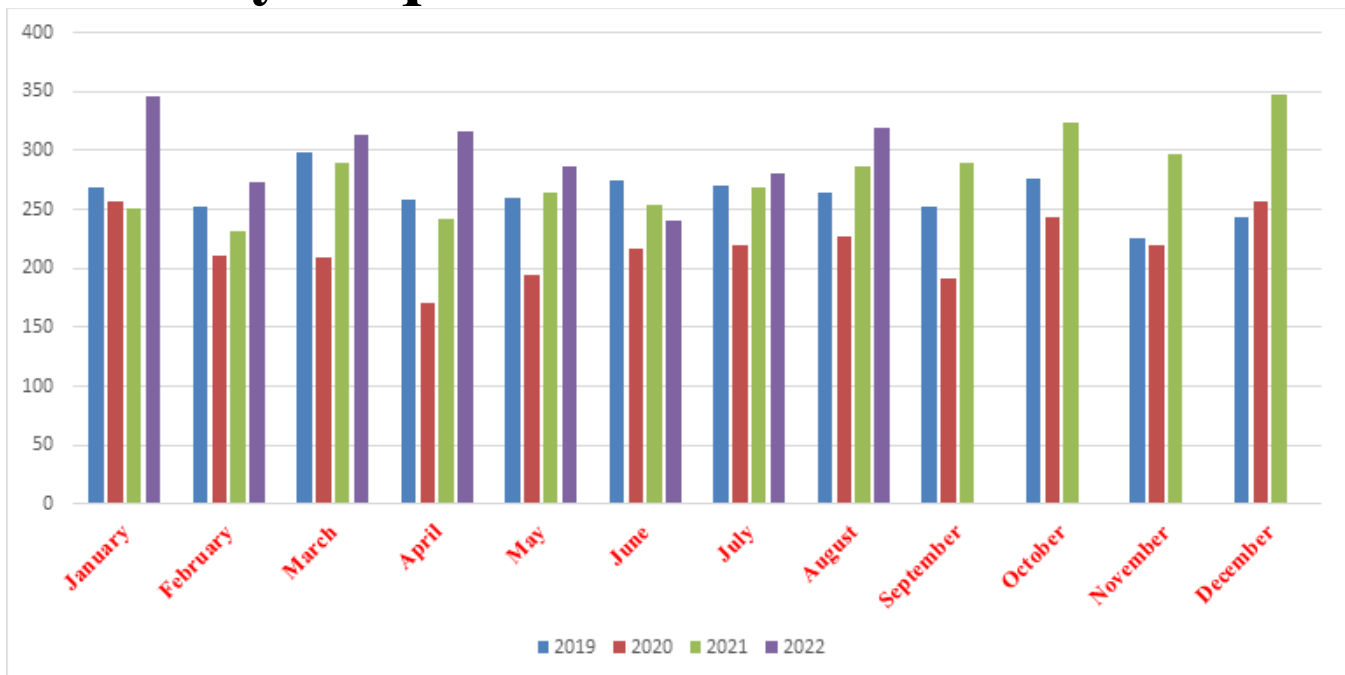
- Patients with Chest Pain receive a 12-lead EKG YTD 100%
- Patient contact to completion of initial 12-lead EKG YTD (National Standard is 10 minutes) 7:00 minutes
- Aspirin administration for patients with a complaint of chest pain YTD 100%
- Suspected Stroke patients with a completed and documented stroke assessment 100%
- Hypoglycemia-Treatment administered and documented for Hypoglycemia YTD 100%
- Pediatrics-Pediatric Respiratory assessment YTD 100%
- Pediatrics-Documentation of Estimated Weight in Kilograms YTD 100%
- Trauma patients—Transported to destination type. YTD 100%
- Use of Lights and Sirens during response to the scene 70%
- Use of Lights and Sirens during transport 1%

# Request for Service 2015 to 2022

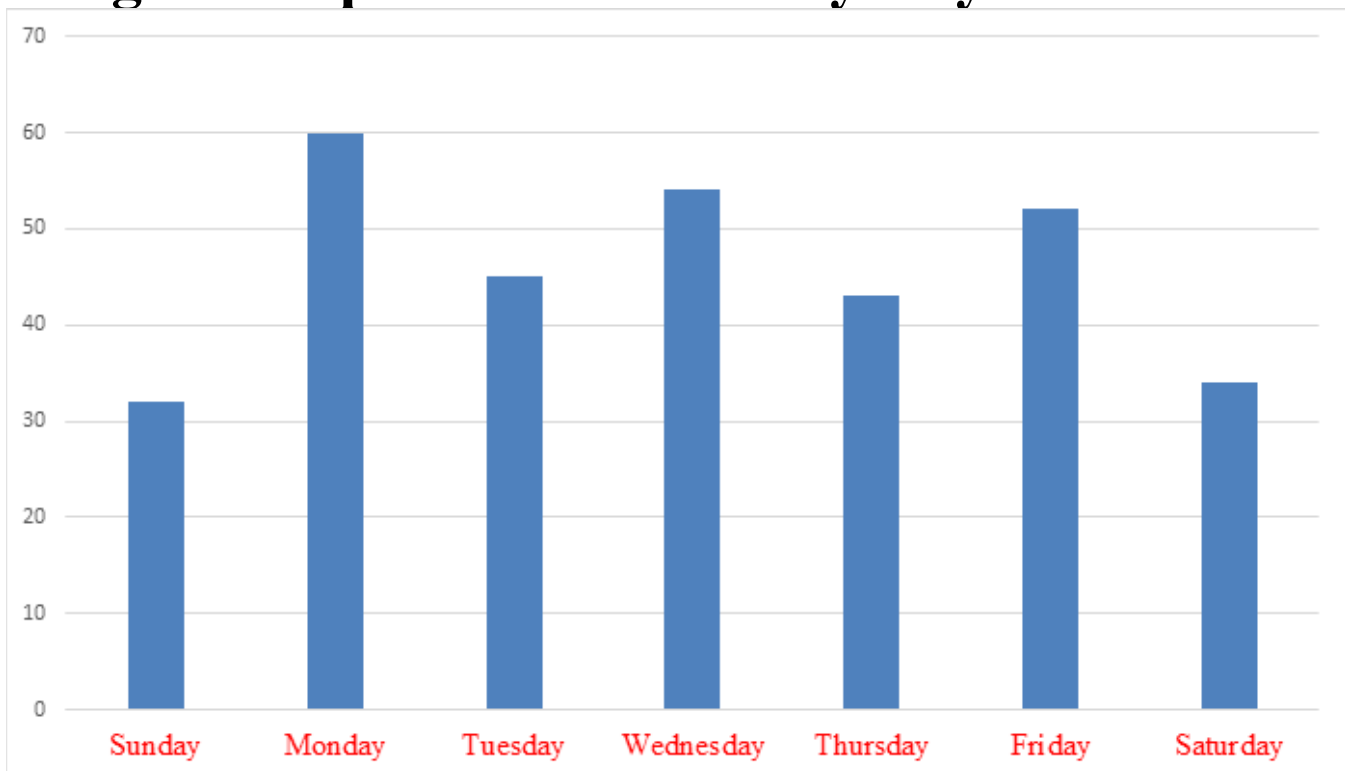


|      |       |
|------|-------|
| 2015 | 2,940 |
| 2016 | 2,970 |
| 2017 | 3,151 |
| 2018 | 3,067 |
| 2019 | 3,154 |
| 2020 | 2,617 |
| 2021 | 3,345 |
| 2022 | 2,377 |

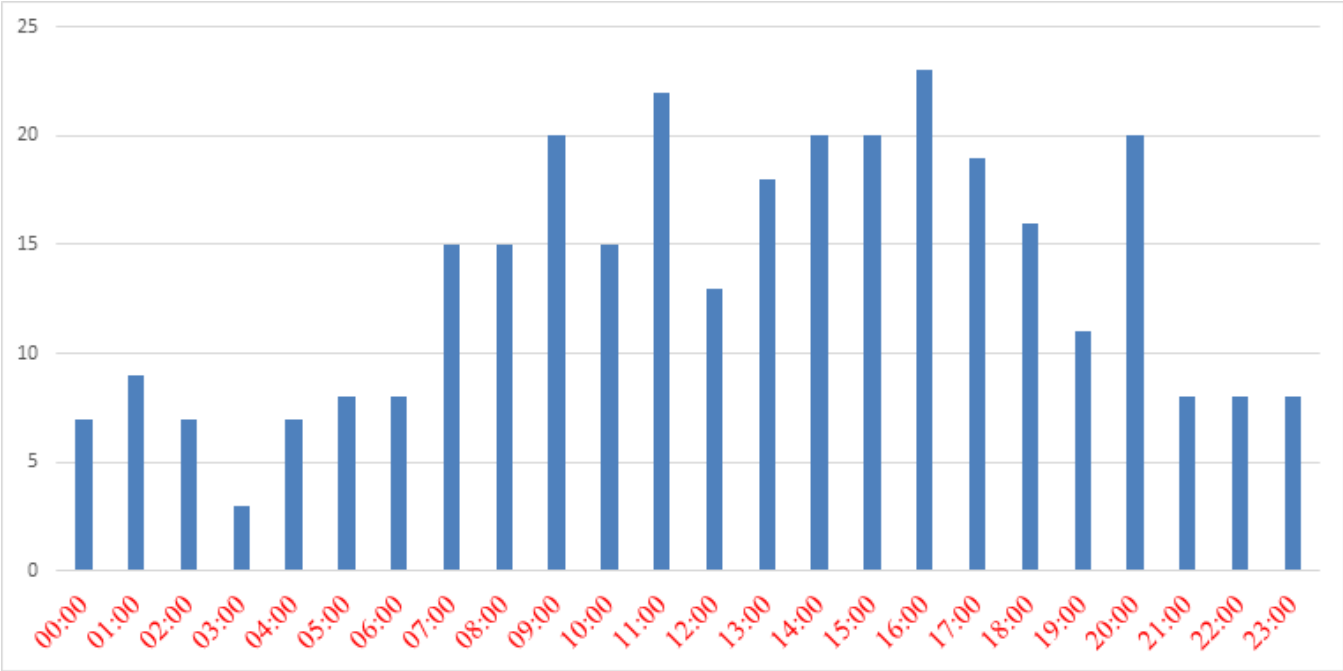
# Monthly Request for Service 2019 and 2022



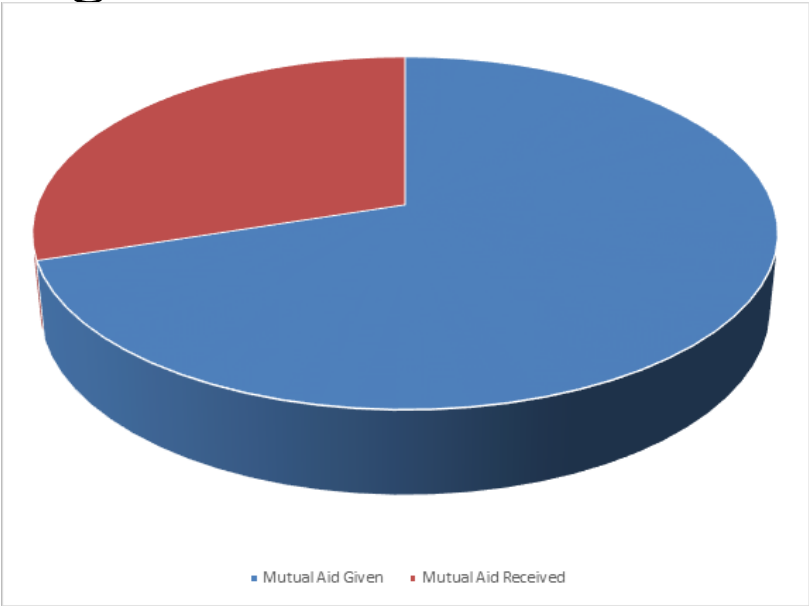
# August-Request for Service by Day of the Week



# August-Request for Service by Hour of Day



# August-Mutual Aid Details





| <b>Mutual Aid Given</b> | <b>August</b> | <b>Mutual Aid Received</b> | <b>August</b> |
|-------------------------|---------------|----------------------------|---------------|
| Camp Hill               | 5             | Camp Hill                  | 4             |
| Carlisle                | 0             | Carlisle                   | 0             |
| East Pennsboro          | 3             | East Pennsboro             | 0             |
| Hampden                 | 21            | Hampden                    | 10            |
| Lemoyne                 | 18            | Lemoyne                    | 9             |
| Mechanicsburg           | 8             | Mechanicsburg              | 2             |
| Monroe                  | 0             | Monroe                     | 0             |
| New Cumberland          | 1             | New Cumberland             | 6             |
| Shiremanstown           | 2             |                            |               |
| Silver Spring           | 1             | Silver Spring              | 0             |
| Upper Allen             | 26            | Upper Allen                | 5             |
| Wormleysburg            | 0             | Wormleysburg               | 0             |
| York County             | 6             | York County                | 3             |
| Dauphin County          | 0             | Dauphin County             | 0             |
| Perry County            | 0             | Perry County               | 0             |
|                         |               |                            |               |
| Cancellations           | 28            |                            |               |
| Other non-revenue       | 9             |                            |               |
| Revenue                 | 54            |                            |               |
| <b>Mutual Aid Given</b> | <b>91</b>     | <b>Mutual Aid Received</b> | <b>39</b>     |

## August-Call Disposition

|  |     |
|--|-----|
| Assist, Agency   | 7   |
| Assist, Unit   | 1   |
| Cancelled (No Patient Contact)   | 31  |
| Cancelled (Prior to Arrival at Scene)                                  | 29  |
| Patient Dead on Scene - No Resuscitation Attempted (Without Transport) | 1   |
| Patient Evaluated, No Treatment/Transport Required                     | 13  |
| Patient Refused Evaluation/Care (Without Transport)                    | 5   |
| Patient Treated, Released (AMA)  | 8   |
| Patient Treated, Released (per protocol)                               | 15  |
| Patient Treated, Transferred Care to Another EMS Professional/Unit     | 2   |
| Patient Treated, Transported by Private Vehicle                        | 1   |
| Standby - Public Safety, Fire, or EMS Operational Support Provided     | 7   |
| Transported Lights/Siren   | 2   |
| Transported No Lights/Siren  | 201 |
| Transported No Lights/Siren, Upgraded                                  | 1   |

## Primary Injuries

### January 1, 2022, to December 31, 2022

|                                |     |
|--------------------------------|-----|
| Abuse                          | 1   |
| Animal/Plant Contact           | 3   |
| Assault                        | 24  |
| Burns                          | 1   |
| Falls                          | 429 |
| Firearms                       | 1   |
| General                        | 16  |
| Intentional Self Harm          | 6   |
| Machinery Accidents            | 2   |
| Motorized Vehicle Accident     | 80  |
| Non-Motorized Vehicle Accident | 2   |
| Pedestrian - Vehicle Accident  | 5   |
| Physical Exertion              | 5   |
| Sharp Objects                  | 7   |
| Struck by Object               | 7   |

## Primary Impressions

### January 1, 2022, to December 31, 2022

(Primary impressions are based on the provider's impression of a patient after assessment)

|                                      |     |
|--------------------------------------|-----|
| Abdominal Pain                       | 102 |
| Acute abdomen                        | 2   |
| Acute Pain, not elsewhere classified | 12  |
| Acute Respiratory Distress (Dyspnea) | 41  |
| Adult general exam, no finding       | 2   |
| Alcohol dependence with withdrawal   | 3   |
| Alcohol use                          | 10  |
| Allergic Reaction                    | 16  |
| Altered Mental Status                | 82  |
| Altered mental status, transient     | 2   |
| Anaphylaxis                          | 3   |
| Anemia                               | 3   |
| Anxiety reaction/Emotional upset     | 36  |
| Asthma                               | 4   |
| Back Pain                            | 68  |
| Behavioral/psychiatric episode       | 43  |
| Burn                                 | 1   |
| Cancer                               | 4   |

|  |    |
|--|----|
| Cardiac arrest                               | 18 |
| Cardiac arrhythmia/dysrhythmia               | 45 |
| Cellulitis                                   | 3  |
| Chest Pain / Discomfort                      | 84 |
| Chest pain on breathing                      | 4  |
| Chest Pain, Other (Non-Cardiac)              | 35 |
| Child general exam, no finding               | 1  |
| Chronic Obstructive Pulmonary Disease (COPD) | 6  |
| Common Cold                                  | 2  |
| Confusion/Delirium                           | 9  |
| Congestive heart failure (CHF)               | 6  |
| Constipation                                 | 2  |
| Convulsions                                  | 22 |
| Cough  | 17 |
| COVID-19 - Confirmed by testing              | 25 |
| COVID-19 - Exposure to confirmed patient     | 8  |
| COVID-19 - Suspected - no known exposure     | 14 |
| Dehydration                                  | 5  |
| Depression                                   | 1  |
| Diabetic Hyperglycemia                       | 22 |
| Diabetic Hypoglycemia                        | 21 |
| Diarrhea                                     | 6  |
| Displacement of urinary catheter             | 2  |
| Displacement of vascular dialysis catheter   | 1  |
| Dizziness                                    | 37 |
| Edema  | 3  |
| End stage renal disease (ESRD)               | 2  |
| Epistaxis                                    | 12 |
| Esophagitis                                  | 1  |
| Extremity Pain                               | 54 |
| Eye Injury                                   | 1  |
| Failure to Thrive (Adult)                    | 2  |
| Fatigue                                      | 10 |
| Febrile Seizures                             | 5  |
| Fever  | 12 |
| Foreign Body in Respiratory Tract            | 1  |
| Foreign Body in Trachea                      | 2  |
| Gastrointestinal hemorrhage                  | 9  |
| Hallucinogen related disorders               | 1  |
| Headache                                     | 26 |
| Health hazard contact /Suspected exposure    | 1  |
| Heat Exhaustion                              | 5  |
| Hematemesis                                  | 1  |

|   |     |
|---|-----|
| Hemorrhage  | 27  |
| Hypertension  | 19  |
| Hypertensive crisis                                 | 3   |
| Hyperventilation                                    | 4   |
| Hypotension   | 32  |
| Infectious Disease                                  | 1   |
| Influenza   | 1   |
| Injury  | 47  |
| Injury of Abdomen                                   | 1   |
| Injury of Ankle                                     | 12  |
| Injury of Elbow                                     | 3   |
| Injury of Face                                      | 19  |
| Injury of Foot                                      | 4   |
| Injury of Forearm                                   | 13  |
| Injury of Head                                      | 76  |
| Injury of Hip                                       | 40  |
| Injury of Lower Back                                | 2   |
| Injury of Lower Leg                                 | 26  |
| Injury of Neck                                      | 20  |
| Injury of Nose                                      | 1   |
| Injury of Pelvis                                    | 1   |
| Injury of Shoulder or Upper Arm                     | 19  |
| Injury of Thigh (Upper Leg)                         | 8   |
| Injury of Thorax (Upper Chest)                      | 5   |
| Injury of Wrist, Hand, or Fingers                   | 14  |
| Laceration/Abrasion/Hematoma (minor surface trauma) | 7   |
| Limb/hand/foot/fingers/toes pain                    | 2   |
| Lower back pain                                     | 6   |
| Malaise   | 84  |
| Medical device failure                              | 4   |
| Mental disorder                                     | 2   |
| Metabolic disorder                                  | 2   |
| Migraine  | 1   |
| Multiple injuries                                   | 1   |
| Nausea  | 12  |
| No Complaints or Injury/Illness Noted               | 106 |
| Obesity   | 1   |
| Obvious Death                                       | 12  |
| Orthostatic Hypotension                             | 5   |
| Other cardiovascular disorder                       | 3   |
| Overdose - Alcohol                                  | 2   |
| Overdose - Cannabis                                 | 2   |
| Overdose - Hallucinogens                            | 1   |

|   |    |
|---|----|
| Overdose - Heroin   | 2  |
| Overdose - Other opioids                                    | 5  |
| Overdose - Synthetic narcotics                              | 1  |
| Overdose - Unspecified                                      | 8  |
| Pain (Non-Traumatic)  | 39 |
| Pain, acute due to trauma                                   | 11 |
| Pain, chronic   | 5  |
| Palpitations  | 3  |
| Patients assist only  | 3  |
| Pelvic and Perineal Pain                                    | 2  |
| Pitting Edema   | 1  |
| Pneumonia   | 3  |
| Poisoning / Drug Ingestion                                  | 2  |
| Pregnancy related conditions                                | 3  |
| Pregnancy with contractions                                 | 1  |
| Preterm labor with preterm delivery                         | 1  |
| Rash  | 2  |
| Reduced Mobility  | 6  |
| Renal Failure   | 1  |
| Respiratory Arrest  | 1  |
| Respiratory disorder  | 19 |
| Respiratory Failure   | 1  |
| Seizure   | 8  |
| Seizures with status epilepticus                            | 3  |
| Seizures without status epilepticus                         | 12 |
| Sepsis/Septicemia   | 23 |
| Septic Shock  | 2  |
| Shortness of breath   | 71 |
| Skin infection  | 5  |
| ST elevation (STEMI) myocardial infarction of anterior wall | 2  |
| ST elevation (STEMI) myocardial infarction of inferior wall | 2  |
| ST elevation myocardial infarction (STEMI)                  | 1  |
| Stroke  | 36 |
| Substance abuse   | 1  |
| Suicidal Ideation   | 7  |
| Suicide attempt   | 1  |
| Syncope / Fainting  | 61 |
| Toothache   | 1  |
| Transient Cerebral Ischemic Attack (TIA)                    | 6  |
| Traumatic Circulatory Arrest                                | 1  |
| Unconscious   | 16 |
| Urinary system disorder                                     | 11 |
| Urinary Tract Infection (UTI)                               | 21 |

|                           |    |
|---------------------------|----|
| Vaginal Hemorrhage        | 3  |
| Visual Disturbance        | 1  |
| Vomiting                  | 13 |
| Vomiting due to pregnancy | 1  |

## Medication Administration January 1, 2022, to December 31, 2022

|                  |    |
|------------------|----|
| Acetaminophen    | 3  |
| Adenosine        | 11 |
| Albuterol        | 37 |
| Amiodarone       | 4  |
| Aspirin          | 68 |
| Atropine         | 5  |
| Benadryl         | 13 |
| Cardizem         | 3  |
| Dextrose 10%     | 13 |
| Duoneb           | 51 |
| Epi 1:100000     | 16 |
| Epinephrine 1:1  | 5  |
| Epinephrine 1:10 | 45 |
| Fentanyl         | 11 |
| Glucagon         | 5  |
| Lidocaine        | 1  |
| Morphine         | 3  |
| Narcan           | 19 |
| Nitro Paste      | 1  |
| Nitro Spray      | 21 |
| Nitroglycerin    | 80 |
| Ondansetron      | 26 |
| Oral Glucose     | 6  |
| Solu-Medrol      | 14 |
| Tylenol          | 4  |
| Valium           | 3  |
| Versed           | 13 |
| Zofran           | 38 |

**Fire Company Statistics:**

Lower Allen Fire Company

Fire Incidents – 12

Overpressure/Explosion/Overheat – 0

Rescue and Emergency Medical Services (EMS/Vehicle Accidents) – 13

Hazardous Condition w/No Fire (Gas Leak/Spills/CO/Wires Down) – 7

Service Calls (Water Leaks/Smoke Removal/Transfer) – 3

Good Intent Calls (Cancelled response/Smoke scare) – 15

Fall Alarm/Calls – 15

Severe Weather/Natural Disaster - 3

**Total – 68**

*(Automatic/Mutual Aid outside of Township from Total – 21)*

Lisburn Community Fire Company

Fire Incidents – 4

Overpressure/Explosion/Overheat – 0

Rescue and Emergency Medical Services (EMS/Vehicle Accidents) – 0

Hazardous Condition w/No Fire (Gas Leak/Spills/CO/Wires Down) – 1

Service Calls (Water Leaks/Smoke Removal/Transfer) – 2

Good Intent Calls (Cancelled response/Smoke scare) – 17

Fall Alarm/Calls – 1

Severe Weather/Natural Disaster - 0

**Total – 25**

*(Automatic/Mutual Aid outside of Township from Total – 11)*

*(All incidents are categorized using National Fire Protection Association and National Fire Incident Reporting System Coding)*

**Fire Company Training:**

Lower Allen Fire Company and Lisburn Community Fire Company conducted joint training for the month of August.

- On 8/17/2022 Training was conducted on Hydrant Operations, Tanker Shuttle Operations and Aerial Water Flow Operations at the Public Works facility.
- On 8/23/2022 Training was conducted at the Lisburn Fire Station on Rural Water Supply – Dump Site Operations.
- On 8/30/2022 Training was conducted on a Rural Water Supply – Tanker Shuttle Operations with a Shuttle route of Sheepford Road, Thompson Lane, and Lisburn Road. Several mutual aid tankers participated in the training.





August 17, 2022 - Fire Training at Lower Allen Public Works.

### **Events/Activities:**

On 8/2/2022 Lower Allen Fire Company and Lisburn Community Fire Company participated in Lower Allen Police Department's National Night Out activities which encompassed Fire Truck displays, recruitment activities, and fire prevention demonstrations using the fire safety trailer and fire extinguisher trainer. National Night Out was a great success.

On 8/5/2022 virtual meetings were conducted on the Alpine RedNMX Software Implementation Project for Lower Allen Fire Company, Lisburn Fire Company, Lower Allen Public Safety, and Lower Allen Fire Codes with the following invited to attend: Public Safety Director Dave Holl, LAFC Fire Chief Dave Murdoch, LAFC Chris Trace, Fire Captain Frank Wirth, Fire Inspector Bill Yeagley, and LCFC Deputy Chief Bryce Landis. Discussions pertain to maintaining and updating the Alpine System for optimum performance and record keeping.

On 8/6/2022 Lower Allen Fire Company held a recruitment and fire prevention event at the Sportsmen's Warehouse at the Capital City Mall. This event was a success with several people participating in activities involving the fire safety trailer and a couple of inquiries concerning membership in the fire company.

On 8/10-13/2022 the Lisburn Fire Company hosted their 69<sup>th</sup> Olde-Time Festival. The weather was great as was the food. Great community support and attendance. It was a record-breaking year for participation and fundraising.

On 8/12/2022 and 8/26/2022 virtual meetings were conducted by the Lower Allen Fire Company Recruitment Working Group with the following invited to attend: Public Safety Director Dave Holl, LAFC Fire Chief Dave Murdoch, LAFC President Pam Tkac, Lower Allen Fire Company Live-In Tyler Rotelle, Public Safety Fire Captain Frank Wirth, and Jeff Fitzgerald with Fire Media Strategic Marketing. Discussions pertained to developing and implementing recruitment initiatives.

On 8/13/2022 Lower Allen Fire Company provided stand-by coverage with Engine 1-12 for Lisburn Community Fire Company during their Festival.

On 8/20/2022 Lower Allen Fire Company provided stand-by coverage with Engine 3-12 for Wellsville Fire Company during their Carnival.

On 8/22/2022 Public Safety Director Dave Holl, Lower Allen Fire Chief Dave Murdoch, Lisburn Fire Chief Greg Black, Public Safety Fire Captain Frank Wirth, and Human Resources Coordinator Donna Paul conducted interviews for the position of Full-Time PSO.

On 8/27/2022 Lower Allen Fire Company conducted a Chicken BBQ that sold out quickly and was very successful.

#### **Public Safety Officers/Fire Captain/Fire Inspector:**

##### Fire Department Responses:

Fire Captain - 35

Codes Coordinator/Fire Inspector - 34

Public Safety Officers – 150

##### Statistics:

Assist to Police Department – 1

Assist to Emergency Medical Services – 2

Child Safety Seat – 0

Fire Prevention Activities – 1 (NNO)

Fire Inspections – 33

Fire Permits Issued – 46

New Property Maintenance Cases - 3

Property Maintenance Inspections – 8

Property Maintenance Citations Issued – 0

##### Daylight Training Sessions:

- On 8/11/2022 Daylight training was conducted on Ropes and Knots. Training was conducted by PSO Keegan Toot. Lower Allen EMS participated in this training.
- On 8/16/2022 Daylight training was conducted on Rural Water Supply.
- On 8/23/2022 Daylight training was conducted on Building Familiarization by conducting a walkthrough of the Arcona Phase 8.1 buildings currently under construction.
- On 8/25/2022 Daylight training was conducted on Probationary Task Booklet items for new Live-In Firefighter Shane Katrancha.
- On 8/30/2022 Daylight training was conducted on Forcible Entry at Station #2.

### Other Training and Events:

- On 8/15/2022 PSO Jeremy Saul conducted training on Situational Awareness Matters. This training focused on how the mind processes information, how the mind becomes overwhelmed with information, and how to remain focused on the fireground to improve decision-making skills.
- On 8/29/2022 PSFC Frank Wirth conducted training on Fire Dynamics: Strategies and Tactics. This training focused on fire behavior, the art of reading smoke, and tactics to use when faced with dynamic fire scenarios.

### **Emergency Response Incidents:**

On 8/2/2022 in the morning Lisburn Community Fire Company, was dispatched for a reported structure fire at 3160 Lewisberry Road in Newberry Township, York County. Engine 24 was initially dispatched as the Rapid Intervention Team but was then assigned overhaul duties. The structure, a detached garage, was a total loss.

On 8/3/2022 in the afternoon Lower Allen Fire Company was dispatched to assist with a fire involving multiple vehicles at 91 Hummel Avenue in the Borough of Lemoyne. Truck 12 crew assisted with fire attack and overhaul. Both vehicles were a total loss.

On 8/11/2022 in the early morning Lower Allen Fire Company was dispatched to assist with a reported basement fire at 124 Herman Avenue in the Borough of Lemoyne. Truck 12 crew arrived on scene and extinguished the fire with a pressurized water extinguisher and assisted with ventilation. Minimal damage in the basement.

On 8/11/2022 in the afternoon Lower Allen Fire Company was dispatched to assist with a reported basement fire at 427 Hummel Avenue in the Borough of Lemoyne. Truck 12 crew found a dryer fire and extinguished it with a pressurized water extinguisher. Minimal damage in the basement.

On 8/12/2022 in the evening Lower Allen Fire Company was dispatched to assist with a reported structure fire at 205 West Lisburn Road in Upper Allen Township. Squad 12 crew assisted with overhaul of the structure. There was major damage to the structure.



On 8/13/2022 in the morning Lower Allen Fire Company, Lisburn Community Fire Company, and automatic aid partners responded to a report of a structure fire at 2794 Stonegate Circle in the Township. Squad 12 arrived to find a fire in the garage being controlled by the fire sprinkler system. Squad 12 and Engine 1-12 crew completed extinguishment and overhaul of the garage. There was minor fire damage to the contents in the garage. Fire Inspector Yeagley coordinated restoration of the sprinkler system which was completed by the afternoon.

On 8/15/2022 in the early morning Lower Allen Fire Company was dispatched to assist with a reported structure fire at 171 South Enola Drive in East Pennsboro Township. Engine 1-12 crew assisted with extinguishment and overhaul. There was major damage to the structure.

#### **Live-In Firefighter Activities:**

- Lieutenant Brian Ariano responded to 24 incidents (35%) this month.
- Firefighter Tyler Rotelle responded to 38 incidents (56%) this month.
- New Live-In Firefighter Shane Katrancha moved into Fire Station #1 on August 21, 2022 and has started his Probationary Task Booklet. Firefighter Katrancha has responded to 23 incidents (34%) this month.



### Lower Allen Fire Company Response Chart:

The above chart displays the average number of responders for the four categories displayed: Public Safety (PS) Staff (Full-Time PSOs, Part-Time PSOs, Fire Captain, and Fire Inspector); Live-Ins include work and college live-ins at both fire stations; Volunteers on calls are those that respond on fire apparatus; Volunteers on Standby are those that standby on station during the incident). This chart will be updated monthly.

