



Fall 2019

TOWNSHIP NEWS

Lower Allen Township • 2233 Gettysburg Road • Camp Hill , PA 17011



Board of Commissioners

Richard F. Schin, Carolyn Holtzman,
Peddrick M. Young, Sr.;
President H. Edward Black,
Vice President Dean W. Villone

Inside this issue:

Directory, Officials in Action, Bus and RV Parking, 2020 Census	Pages 2-3
Advertising, New Business, Budget Hearings, Important Dates, Shoveling Snow, Winter Parking	Pages 4-5
Flu Season Preparation, Ambulance Subscriptions, Lower Allen Township Fire Co. Volunteers Wanted	Pages 6-7
Township Trick Or Treating, LA Alerts, Halloween Decorations	Pages 8-9
Lisburn Fire Company Events, Penn Waste News	Pages 10-11
MS4 News	Pages 12-13
Electrical Safety, New Years Eve Yellow Breeches Drop, Lower Allen Township Fire Co. Live-ins Wanted	Pages 14-15
Curbside Yard Waste, Bulk Item Disposal, Daylight Savings, Cumberland County Vector Control	Pages 16-17
Scout News, Board & Commission Volunteers Needed , Tax Office , West Shore Rec News, Fredricksen Library	Pages 18-19

Leaf Collection Information

The annual leaf collection for Lower Allen will start on Monday October 21st and continue through the week of December 9th. **(With the exception of the Thanksgiving Holiday, November 22 – November 26th)** Crews will collect leaves weekly through each neighborhood. If you miss the collection for the week, you will have to wait until the next round to have your leaves removed. The picking machines are equipped with a 5-foot hose that sucks up the leaves into a holding box, which is attached to the truck. Please rake leaf rows to the street side of the curb, or within 5' of street edge where no curb exists, in long rows, not large piles. Leaves that are not raked within 5 feet of the road will not be collected. The efforts of leaf collection crews are focused on collecting bulk volumes of leaves as efficiently as possible. It is not practical to spend time vacuuming all the leaf debris only to have more leaves accumulate a few hours later. At the end of the season, after the last round of leaf collection, the Township street sweeper will clean the streets to remove any remaining debris.

Collection from East to West - Weekly leaf collection will begin in the eastern section of the Township (Allendale) and proceed towards the southern and western sections (Lisburn /Windsor Park areas). Updates regarding leaf collection will be posted on the website at www.latwp.org or information can be obtained by calling Public Works at 717-975-7575 Ext. 2104, during regular business hours.

Just Leaves - Only Leaves may be raked or placed roadside. Do not place sticks, boards, bricks, rocks or other items in the leaf piles.

Clear the way - Roadside trees should be trimmed to the legal height of 14 feet and roadside basketball nets need to be set behind the curb line.

Delays - Heavy accumulations of leaves, inclement weather and machine breakdowns may delay the collection of your leaves. Please be patient as crews do their best to service your area.



DON'T:
Let leaves remain spread out or piled between or under parked cars.



DO:
Please rake leaves into long windrows, not large piles.



DIRECTORY OF SERVICES

Lower Allen Township

2233 Gettysburg Road • Camp Hill, PA 17011

Monday-Friday: 8:00 am to 4:00 pm

Phone: 717-975-7575 • www.latwp.org

Tax Office - Phone: 717-737-5671

Hours: Monday, Tuesday, Thursday 10:00 am - 2:00 pm

KEY STAFF EXT

Thomas G Vernau, Jr., Manager	1001
Erin G. Trone, Assistant Manager and Director of Economic and Community Development	1002
Donna Paul, Human Resources	1402
Dave Holl, Director of Public Safety	1601
Leon Crone, Police Captain	1515
Daniel Flint, P.E., Township Engineer & Director of Public Works	1101
Richard Grove, Finance Director	1202
Bryan Harshbarger, Public Works Coordinator	2106
Frank Wirth, Fire Captain	1311
Tony Deaven, EMS Captain	1810
David Murdoch, Fire Chief, Lower Allen Fire Co.	1302
Frank Williamson, Fire Chief - Lisburn Community Fire Company	766-3994

IMPORTANT NUMBERS

Emergency Police • Fire • EMS	9-1-1 (24-hours a day)
Non-Emergency & After Hours	717-238-9676
Poison Control Center	1-800-222-1222
PPL	1-800-342-5775
UGI	1-800-962-1212
PA American Water	1-800-565-7292
Suez Water Company	1-888-844-0352
Lower Allen Sewer Authority	717-774-0610
Penn Waste (Trash & Recycling)	717-767-4456
Trash Complaints - call the Township	975-7575, ext. 1115
Cleve J. Fredricksen Library	717-761-3900
New Cumberland Public Library	717-774-7820
Joseph T. Simpson Library	717-766-0171
West Shore Recreation Commission www.westshorerec.org	717-920-9515
Representative Sheryl Delozier 2929 Gettysburg Rd., Suite 6, Camp Hill, PA 17011	717-761-4665
Senator Mike Regan 2151 Market Street Camp Hill, PA 17011	717-975-1985
U.S. Representative Scott Perry	717-635-9504
U.S. Senator Robert Casey, Jr.	717-231-7540
U.S. Senator Pat Toomey	717-782-3951

OFFICIALS IN ACTION

The Board of Commissioners approved the following:

RESOLUTIONS



- 2019-R-30 Appointing Mark A. D'Agostino to the position of Highway Superintendent in the Public Works Department. (Adopted 7-22-19)
- 2019-R-31 Urging the Public Utility Commission to adopt a regulation that would require hazardous liquids pipeline operators to hold public awareness meetings. (Adopted 8-12-19)
- 2019-R-32 Authorizing the sale of Township property valued over \$2,000. (Adopted 8-12-19)
- 2019-R-33 Appointing Ryan J. Turpin to the position of Maintenance Specialist in the Public Works Department. (Adopted 8-12-19)
- 2019-R-34 Resolving to implement health in all policies. (Adopted 8-12-19)
- 2019-R-35 Reappointment of Zoning Officer; appointment/reappointment of Assistant Zoning Officers. (Adopted 8-26-19)
- 2019-R-36 Investment Policy Statement, Defined Contribution Plan, (Adopted 9-9-19).
- 2019-R-37 Adopting minimum Municipal Obligations payable to the Lower Allen Township Police Pension Plan and the Lower Allen Township Non-Uniformed Pension Plan in fiscal Year 2020, and appropriating specific sums known as the Pension Budget for fiscal year 2020. (Adopted 9-9-19).
- 2019-R-38 Authorizing the sale of Township property valued over \$2,000. (Adopted 9-23-19).
- 2019-R-39 Approved the transfer of restaurant liquor license No. R-19823 into Lower Allen Township. (Adopted 9-23-19.)

PENNVEST Homeowner Program

The PENNVEST Homeowner Septic Loan Program helps qualified homeowners:

- Repair or replace an existing connection to public sewer or an individual, on-lot sewage disposal system;
- Connect an existing home for the first time to public sewer.

This low-cost loan is funded by PENNVEST and administered by the PA Housing Finance Agency.

Learn More and Apply

Call PHFA's Solution Center at 855-U-ARE-HOME (855-827-3466) or visit www.phfa.org to learn more and view a list of participating lenders.

BUS & RV PARKING • 2020 CENSUS

Buses & RVs

The Board of Commissioners, at their June 24th public meeting, enacted Ordinance 2019-02, which governs the parking of buses and RVs in Residential Zones (R-1, R-2, R-3, and MUN).

RVs Recreational vehicles of 30 feet or less in overall length, used for transportation of an occupant of a residential premise may be parked within the front, rear or side yards of a residential premise, provided the location thereof is approved under Chapter 220, Zoning, as an impervious off-street parking space. Such vehicles may be parked on the residential street for no more than 72 hours for the purpose of loading, unloading, or cleaning. All recreational vehicles stored on a residential property must be currently licensed, registered, and inspected.

Recreational vehicles of greater than 30 feet may only be stored on a residential property or residential street for up to 72 hours for the purpose of loading, unloading, or cleaning. No recreational vehicle may have slide-outs open while parked on a public street.

Buses Standard Buses are not permitted to park in Residential Zones (R-1, R-2, R-3, MUN) at any time. Currently licensed and registered Small Buses may be parked only on a driveway or pad constructed of impervious material, the dimensions of which at least encompass the entire length and width of the bus parked thereon. Small Buses are not permitted to park on any residential street at any time. Restrictions in this section shall not apply to micro-coaches, micro-buses, or high-capacity vans.

Right-of-Way obstructions This ordinance also clarifies that roll-off waste containers, storage pods, or similar containers may not be placed on any street or public right-of-way without a temporary exemption issued by the Manager's office. An application for exemption will be reviewed for:

- ◆ Safety hazard or sight distance obstruction.
- ◆ Valid reasons why the ROW obstruction can't be placed on the property instead of the street.
- ◆ Reasonable duration of the placement.
- ◆ Potential interference with road maintenance, leaf collection, snow and ice removal, or stormwater drainage.

The full ordinance may be viewed on the Township website under the Elected Government tab, *Ordinances*.

The 2020 Census At A Glance

Important - Once every decade, the federal government conducts a census of the entire population to count everyone in the United States and record basic information about them. Our nation's founders believed this data was so important that they mandated the decennial census in the Constitution.

Easy and Convenient - In 2020, for the first time ever, the U.S. Census Bureau will accept responses online, but you can still respond by phone or mail if you prefer.

Confidential and Secure - Strict federal law protects your census responses. It is against the law for any Census Bureau employee to disclose or publish any census information that identifies an individual or business. Census Bureau employees take a lifelong pledge of confidentiality to handle data responsibly and keep respondents' information private. The penalty for wrongful disclosure is a fine of up to \$250,000 or imprisonment for up to 5 years, or both. No law enforcement agency (not the DHS, ICE, FBI, or CIA) can access or use your personal information at any time. Data collected can only be used for statistical purposes that help inform important decisions, including how much federal funding your community receives.

The Census Bureau will never ask for your Social Security number, bank or credit card account numbers, money or donations, or anything on behalf of a political party. The Census Bureau has a robust cybersecurity program that incorporates industry best practices and federal security standards for encrypting data.

Whether you receive a census form in the mail, or a census taker visits your home, please take the time to participate in the census. Getting an accurate count of our population is important to our legislative representation at both the State and Federal levels and may have an impact on certain revenues available to the Township. More information about the census can be found at <https://2020Census.gov>.

The U.S. Census Bureau is hiring census takers. For more information and to apply online, go to <https://2020census.gov/jobs> or call 1-8055-JOB-2020.

ADVERTISING RATES • NEW BUSINESS • BUDGET MEETINGS • IMPORTANT DATES



ATTENTION: Businesses and Organizations, let us help you get your information in front of many Township News readers.

Price	Ad Size# of Issues	
\$250.00	(3 1/2 x 2)	4
\$75.00	(3 1/2 x 2)	1
\$600.00	(6 1/2 x 4)	4
\$175.00	(6 1/2 x 4)	1

To arrange for your ad to be published in the next quarterly issue, available in January, call 975-7575, ext. 1003 or email hgrundon@latwp.org.



DG Graphic Equipment Repair
• 26 Hummel Avenue

BUDGET HEARINGS

The Commissioners will hear presentations from Staff regarding their 2020 budget requests on the following dates:

Monday, September 30th at 6:00 pm
Monday, October 7th at 6:00 pm
Monday, October 21st at 7:00 pm
Monday, November 4th at 6:00 pm
Monday, November 18th at 7:00 pm

The meetings are open to the public. Residents are invited to come and witness the budget process in action.

CALENDAR AT A GLANCE

Meetings are held at the Lower Allen Township Municipal Services Center
(unless noted other wise)

TAX OFFICE (737-5671) Monday, Tuesday, Thursday 10 am - 2 pm

OCTOBER

3 Sewer Authority	7:30 pm
3 Stormwater Authority	7:30 pm
7 Board of Commissioners	6:00 pm
13 Lisburn Chicken BBQ	11:00 to 2:00, or till sold out
13 Lisburn Fire Co. BINGO	Doors Open at Noon
14 Board of Commissioners Budget Meeting	7:00 pm
14—18 Tax Office	CLOSED
15 Planning Commission	7:00 pm
17 Zoning Hearing Board	7:00 pm
21 Development Authority	6:00 pm
21 Board of Commissioners- Budget Meting	7:00 pm
28 Board of Commissioners	7:00 pm
23 Recreation and Parks Board	7:00 pm
31 Trick or Treat	6:00 pm—8:00 pm

NOVEMBER

7 Sewer Authority	7:30 pm
7 Stormwater Authority	7:30 pm
4 Board of Commissioners-Budget Meeting	6:00 pm
10 Lisburn Fire Co. Turkey Dinner	11:00 to 2:00
12 Veterans Day—Township Offices Closed	
12 Board of Commissioners	7:00 pm
14 Recreation and Parks Board	7:00 pm
21 Zoning Hearing Board	7:00 pm
18 Development Authority	6:00 pm
19 Planning Commission	7:00 pm
28-29 Thanksgiving—Township Offices Closed	
25-30 Tax Office	CLOSED
25 Board of Commissioners	7:00 pm

DECEMBER

1-2 Tax Office	CLOSED
5 Sewer Authority	7:30 pm
5 Stormwater Authority	7:30 pm
9 Board of Commissioners	7:00 pm
16 Development Authority	6:00 pm
17 Planning Commission	7:00 pm
19 Zoning Hearing Board	7:00 pm
23 Board of Commissioners	7:00 pm
25 Christmas Holiday—Township Offices Closed	
23-31 Tax Office	CLOSED

JANUARY

1 New Years Holiday—Township Offices Closed	
1-2 Tax Office	CLOSED
2 Sewer Authority	7:30 pm
2 Stormwater Authority	7:30 pm
6 Board of Commissioners - Reorganization Meeting	7:00 pm
13 Board of Commissioners	7:00 pm
16 Zoning Hearing Board	7:00 pm
20 Development Authority	6:00 pm
21 Planning Commission	7:00 pm
22 Recreation and Parks Board	7:00 pm
27 Board of Commissioners	7:00 pm

SHOVELING SNOW • WINTER PARKING

SNOW SHOVELERS NEEDED!

The Township is seeking individuals and/or contractors to clear snow from certain Township sidewalks this winter. We pay \$18.00 per hour, and each sidewalk has a maximum time allowance. The use of snow blowers is permitted. Other guidelines are as follows:

- Contractors are required to clear their assigned sidewalks following every snowfall.
- If a contractor will not be physically able to clear the sidewalk, he or she must notify the Township 24 hours in advance.
- Sidewalk must be cleared within 24 hours after snowfall ceases.
- The Township will provide ice melt and instructions for use. Contractors may not use Township-provided ice melt in any other location than Township sidewalks.
- The Township will pay the contractor \$18 per hour and will set maximum amounts payable for each sidewalk. Times will be determined based on a snowfall of 4 inches or less.
- Time allowance will increase by 50% for snowfalls of 5-8 inches.
- Time allowance will double for snowfalls over 8 inches.
- Contractors must provide their own equipment.
- Contractors will not be covered under any Township insurances.

Please contact the Manager's office at (717) 975-7575, ext. 1003 for more information.



Winter Parking

The Police Department would like to remind residents about parking regulations in effect during the upcoming winter season. Beginning December 1 through March 31, residents may only park their vehicles on one side of the street as indicated by the street signs. The side that is permitted for parking alternates on a monthly basis. Please be sure that you are parking on the correct side of the street. Your compliance allows the Public Works Department to get into the developments to quickly clear a travel lane without weaving between vehicles parked on opposite sides of the street. If a snow emergency is declared you have six (6) hours to remove vehicles from the public roadway. If vehicle(s) are not moved from the roadway within the six hours the vehicle(s) will be towed. The following streets have odd/even signs posted:

19th Street	Elmhurst Road	Letchworth Road	Shoreham Road
20th Street	Highland Drive	Letchworth Drive	Strafford Road
Apple Drive	Kelton Road	Manchester Road	Village Road
Chatham Road	Kent Road	Norman Road	Warwick Road
Chatham Drive	Kent Drive	Oxford Drive	Wyndham Road
Cherokee Avenue	Kingsley Road		

Vehicles that are in violation of the **odd/even** parking requirements are subjected to being ticketed.

A smart way to shovel your drive

How to reduce the possibility of getting a huge pile of snow in your driveway opening when snowplows clear your street:



FLU SEASON PREPARATION • AMBULANCE SUBSCRIPTIONS

Flu Season Preparation

Throughout the fall and winter millions of Americans experience Seasonal Influenza, more commonly known as “the flu.” The flu is a respiratory illness caused by a virus. For most, the flu is just “feeling sick” for a week or two, but for others it becomes much worse. The flu could be a very serious or even life-threatening illness – especially for children, the elderly, and the immune-compromised. The CDC reports that the peak of the flu season is between December and February, but it is never too early to start thinking about it.

There is not much you can do if you catch the flu except treat the symptoms, but there are ways to take preventative actions to stop the spread of the illness and decrease your chances of catching the flu.

1. Wash your hands. Hand washing is one of the best ways to protect yourself from disease. Wash your hands for no less than twenty seconds at a time with soap and water. If you sing the song “Happy Birthday” to yourself, it is the perfect amount of time. If you are only using sanitizer, this is not enough. Wash your hands after using the restroom, touching surfaces or objects that might be contaminated, or any contact with people who are possibly contaminated. Along with this, you want to make sure you disinfect any objects that may be contaminated. Avoid touching your face.

2. Take time to get the flu vaccine. Contrary to popular belief, the flu vaccine does not give you the flu. This vaccine prevents you from getting certain flu strains. There is still a chance to catch another strain of the flu, but this greatly reduces your chances of contracting Seasonal Influenza.

3. Stock up. There is nothing worse than being sick and having to go out to the store for over-the-counter medications or tissues. Plan ahead. Keep a small stock of decongestant and acetaminophen (Tylenol) and Ibuprofen (Motrin) for fever, aches, and pains.

The flu can appear in many different signs and symptoms. The flu is a sudden onset of symptoms. Some of the most common symptoms are; fever, headache, general aches and pains, weakness, fatigue, stuffy nose, coughing, sneezing, sore throat, and chest discomfort. If you are unsure whether you have the flu or not, please consult a doctor. Remember, the flu is not a cold. If you start experiencing multiple symptoms between the fall and spring, take it seriously, and schedule an appointment!

If you still end up catching the flu, remember, your body has to fight it. Symptoms of the flu usually take about three to seven days to start to go away. Some people have had flu symptoms for up to two weeks. What should you do if you catch the flu?

- 1. Drink fluids and get plenty of rest.**
- 2. Eat a balanced diet.**
- 3. See a doctor.**
- 4. Wash your hands!**

Hopefully this information helps everyone. If you have any questions or concerns, please consult a doctor. If there is an emergency please call 911.



Ambulance Subscription Renewals

The 2020 Ambulance Subscription Renewals will be mailed out by the end of the year 2019. Subscriptions are good for the calendar year of 2020. The Board of Commissioners will be setting the rates for 2020 at one of their October meetings.

Why have a subscription? The cost of a trip in an ambulance is very high and insurance generally does not pay the full bill. A subscription can help you save money if you have called 911, are transported to the hospital via ambulance, and the trip is deemed medically necessary by the insurance company. In this case you are not liable for any amounts over the insurance payment if you have a valid subscription. Subscriptions **DO NOT** cover routine transportation, transportation for stretcher or wheelchair, or transportation that is not medically necessary. You are responsible for additional mileage costs if you are transported past the closest appropriate facility.

become a part of our family

VOLUNTEER TODAY



LOWER ALLEN FIRE CO. # 1

2233 GETTYSBURG RD

CAMP HILL, PA

WWW.LOWERALLENFIRE.COM

Are you looking to give back to the community?

Both Fire Companies need you!

No training necessary, we will train you.

LISBURN COMM. FIRE CO.

1800 MAIN ST

MECHANICSBURG, PA

WWW.LISBURNFIRE.ORG





Trick or Treat

Safety Tips

Lower Allen Township's Trick or Treat is Thursday, October 31, from 6-8

Walk Safely

- Cross the street at corners, using traffic signals and crosswalks.
- Look left, right and left again when crossing and keep looking as you cross.
- Put electronic devices down and keep heads up and walk, don't run, across the street.
- Teach children to make eye contact with drivers before crossing in front of them.
- Always walk on sidewalks or paths. If there are no sidewalks, walk facing traffic as far to the left as possible. Children should walk on direct routes with the fewest street crossings.
- Watch for cars that are turning or backing up. Teach children to never dart out into the street or cross between parked cars.

Trick or Treat With an Adult

- Children under the age of 12 should not be alone at night without adult supervision. If kids are mature enough to be out without supervision, they should stick to familiar areas that are well lit and trick-or-treat in groups.

Keep Costumes Both Creative & Safe

- Decorate costumes and bags with reflective tape or stickers and, if possible, choose light colors.
- Choose face paint and makeup whenever possible instead of masks, which can obstruct a child's vision.
- Have kids carry glow sticks or flashlights to help them see and be seen by drivers.
- When selecting a costume, make sure it is the right size to prevent trips and falls.

Drive Extra Safely on Trick or Treat Night

- Slow down and be especially alert in residential neighborhoods. Children are excited on Trick or Treat and may move in unpredictable ways.
- Take extra time to look for kids at intersections, on medians and on curbs.
- Enter and exit driveways and alleys slowly and carefully.
- Eliminate any distractions inside your car so you can concentrate on the road and your surroundings.
- Drive slowly, anticipate heavy pedestrian traffic and turn your headlights on earlier in the day to spot children from greater distances.

Visit the following street locations for FREE pizza slices, courtesy of Lower Allen Fire Company #1.

6:00 to 7:00pm

- Letchworth Drive & Kent Drive (18th St. end)
- Somerset Drive & Maple Drive
- Lancaster Boulevard & Oxford Drive
- Letchworth Road & Chatham Road
- Tisbury Circle
- Lisburn Estates & Allen Estates



7:00 to 8:00pm

- Allendale Way & Blacklatch Lane
- Scarsdale Drive & Neponsit Lane
- Sheepford Crossing Park
- William Penn Drive & Wayne Road
- Citadel Drive & Colgate Drive
- Fox Hollow Road & Canyon Creek

LA ALERTS



Receive Lower Allen Community Notifications

Subscribing is easy! Simply go the Township web page at www.latwp.org and click on **LA Alerts** under the Police & Public Safety News link. Here you will be able to create an account and list the phone numbers and email addresses you wish to be included as contacts. **Please include your street address during the registration process.**

You can also then choose the level of contact and join contact groups. If you have any difficulty, you can also subscribe by calling us at 717-975-7575 Ext. 1602 and we will assist you in registering.

If you do not have access to a computer, please complete the form below and mail to Lower Allen Township, 2233 Gettysburg Road, Camp Hill, PA 17011, Attn: LA ALERTS (or use the drop box near the flag pole in our parking lot).

Please PRINT

I am a Lower Allen Township: ___Resident___Business



NAME AND ADDRESS

Resident or Business Name: _____

Street Address: _____

Apartment or Suite #: _____ City: _____ Zip: _____

PHONE AND EMAIL

Phone (HOME): () ____-____

Phone (CELL): () ____-____ Circle One (TEXT or VOICE) EMAIL: _____

Phone (CELL): () ____-____ Circle One (TEXT or VOICE) EMAIL: _____

Phone (CELL): () ____-____ Circle One (TEXT or VOICE)

GROUP SUBSCRIPTIONS

I would like to subscribe to the following groups: ___ Emergency Alerts ___ Flood Plain Alerts ___ TMI Alerts

___ Leaf/Trash Pick-up ___ Weather Alerts ___ Township Newsletters/Events ___ LA Business Owner/Operator

HALLOWEEN DECORATIONS

Halloween is quickly approaching, and soon we will see our neighborhoods decorated with scary witches, ghosts, goblins and demons. While we appreciate the hard work and creativity that goes into some of these displays, we also ask that folks use common sense when developing displays that may be offensive to others. We've seen displays that could be considered "adult" in nature, and one a few years ago that was viewed as racist by a viewer.

Also, with all the little monsters, robots, and princesses walking through the neighborhoods trick-or-treating, please place your displays where they cannot be tripped over. Please accompany the little ones, make them cross streets at the intersections, and if possible, build some reflectivity into the costume.

Trick or Treat will be held from 6:00 to 8:00 pm on Thursday, October 31st this year.

Lisburn Community Fire Company



Thank you to all our vendors, volunteers, attendees & members who made this year's Festival a success. Mark your calendar for our **67th** annual Festival—**August 5-8, 2020.**

BINGO October 13th

12pm-Doors & Kitchen open

\$22 in Advance 1:30pm-Early Bird starts

\$25 at the Door. 2:00pm-Bingo starts

Regular games, special games & Final Jackpot. Small games of chances, Door Prizes and Good Food. Contact Darla at 717-576-6229 or the Fire Company at 717-766-3994 for tickets.

**CHICKEN
BBQ
DRIVE THRU**

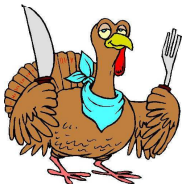
OCTOBER 13th-CHICKEN BBQ

11:00 a.m. to 2:00 p.m. Each \$9.00 dinner will include one half barbecued chicken, a baked potato, applesauce, a roll, butter, and a bottle of water.

Grab a dinner and stay for Bingo

Eat the dinner in our Social hall while waiting for Bingo to start.

November 10th-Turkey Dinner



We serve from 11:00-1:30 and in addition to turkey we will be serving mashed potatoes, stuffing and gravy, corn, cranberry sauce, rolls, drinks and homemade desserts. The cost is \$10.00 for adults and children 4 to 10 years are just \$4.25. Hope to see you there!

11:00 a.m. to 2:00 p.m. Adults are \$10.00 and children are \$4.50.

Thank you
FOR YOUR SUPPORT

1800 Main Street, Lisburn (717) 766-3994
Mechanicsburg, PA 17055 www.lisburnfire.org
LisburnFire24@gmail.com

PENN WASTE NEWS

UNLIMITED REFUSE PICKUP?

The Township's refuse service agreement with Penn Waste states, "The Contractor shall be required to collect weekly..."One (1) Contractor-provided wheeled cart with attached lid, *plus additional containers and bags as the customer finds necessary*. This would seem to indicate that refuse pickup is unlimited, but does "unlimited" really mean *unlimited*?

Penn Waste will pick up a lot of refuse. Their crews have been very good at collecting large loads, but in some cases have come upon *extreme* amounts of trash. When they encounter upwards of 20 items or more (in one recent case, there was somewhere in the neighborhood of 100 bags), it slows down collection and can force the truck to make an additional trip to the dump to unload.

That said, they are willing to pick up the refuse, but we are asking that residents who find themselves in the position of having to place this much refuse out for collection to call either the Township or Penn Waste ahead of time to let us know so that they can make the proper adjustments to their route. Similar to someone calling ahead before they place an old refrigerator out, Penn Waste may send a separate truck with additional staff to pick up the large load.

So yes, unlimited does mean unlimited, at least in the current contract, but we're asking to help out the drivers by calling ahead and warning them about extreme amounts of refuse.

Do NOT Place Pool Chemicals in Your Curbside Trash & Recycling Bins!

Pool Chemicals are Considered Hazardous Waste

Penn Waste would like to issue a reminder to residents that pool chemicals should NOT be disposed of in your curbside trash and recycling bins. Pool chemicals are considered hazardous waste and need to be disposed of properly.

The Problem

As noted by the EPA, pool chemicals are hazardous because when they mix with a small quantity of water or are improperly mixed, such as with other chemicals or reactive materials, they can ignite, causing fires. They can also cause skin irritation and release toxic vapors.

Many pool chemicals are highly reactive and capable of generating high temperatures which will start fires. Reactivity may be triggered by water wetting the chemical or by the inadvertent mixing of pool chemicals with an incompatible material.

When pool chemicals are disposed of in the trash or recycling, there is a high risk of them reacting because they **will** come in contact with other liquids in our trucks. Rain, high humidity, and other general liquids disposed of in your trash and recycling can cause the pool chemicals to react when they get collected by our truck resulting in a truck fire .

The Solution

Do not place pool chemicals in your trash and recycling! Here are several options for getting rid of pool chemicals:

1. Take them to a facility that handles hazardous waste. Make sure you check with your local solid waste authority to see if they accept pool chemicals prior to arriving.

Cumberland County Solid Waste Authority – 717-240-6489

2. Check with the pool store you originally bought them from to see if they have a disposal method.
3. Donate them to a community pool or your neighbors who have pools.
4. Shock your pool by dumping the left over pool chemicals in before you close it for the season.

We appreciate your help in keeping our team members safe!

Municipal Separate Storm Sewer System (MS4) Update: **Maintaining your grass swale**

In many neighborhoods and commercial properties, stormwater runoff (rain and melting snow) from building roofs, driveways, and roads is directed into grass drainage swales. They are designed to convey stormwater runoff safely downstream and can be located along the side property lines between adjacent houses, rear property lines, along roads and parking lots.

During large storms, swales can direct runoff to other stormwater facilities or to the storm drain system. Swales can cause flooding and ponding problems if they are not maintained properly. The grass covering the side and bottom slopes of a swale provides a filtration surface for the water and helps to reduce the flow velocity.

Actions you can take to maintain your swale in good working condition include:

Monthly

- ⇒ Inspect your swale after storms to make sure that rainwater has drained and there is no erosion.
- ⇒ Remove sediment, trash, and debris from in and around the swale.

Seasonally

- ⇒ Mow grass no shorter than 2 ½ - 3 inches. Remove or compost tall grass clippings.
- ⇒ Manually remove any weeds or invasive plants
- ⇒ Remove or compost leaves in the fall. Leaves may block the flow of water and prevent the water from infiltrating.
- ⇒ Adjust the mower height to avoid scalping the edges of the side slopes.

As Needed

- ⇒ Reseed any bare areas.

Don't

- ⇒ Use fertilizer or pesticides in your swale.
- ⇒ Over mow the swale or mow immediately after a rain event.
- ⇒ Do not install sheds, playground equipment, fences or any other structure in drainage swales.

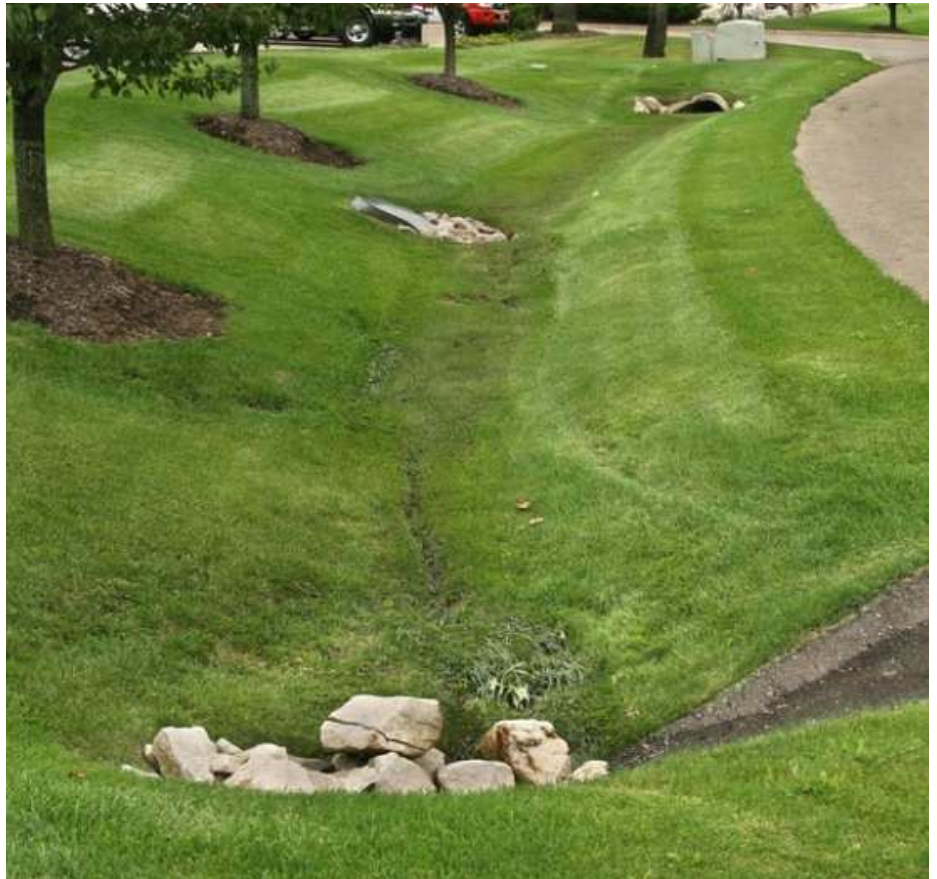
Remember

- ⇒ Grass drainage swales are designed and constructed to protect you and your property from potential flooding and ponding problems.
- ⇒ If you own a drainage swale, please make sure that it functions as designed.
- ⇒ As the property owner, you are responsible for the maintenance of your grass drainage swale!
- ⇒ By maintaining your swale, you are doing your part to help the environment and protect the local streams and ultimately the Chesapeake Bay.

MS4



If you have any questions regarding swale maintenance or stormwater runoff please contact Rebecca Davis, MS4 Coordinator, at rdavis@latwp.org, or 717-975-7575 ext. 1010.



Electrical Safety

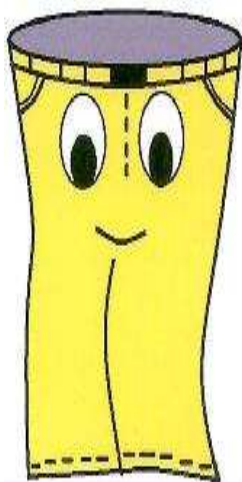
Where is the closest outlet? How much power does each device draw? How much can the electrical circuit for this outlet handle? Can I use an extension cord or a power strip? These are four important questions you should be asking yourself when you go to plug in something.

Extension Cords—When using an extension cord, be sure to match the capability of the cord with the power demand of the device you are connecting to your electrical system. If you are using items like heaters, power tools and vacuums, always make sure the extension cord has the proper gauge, voltage rating and amperage rating to handle the above-average load of these types of items. Overloading the extension cord might heat it up quickly, which can cause melting and possibly a fire.

- ◆ Extension cords are for TEMPORARY USE ONLY. Temporary means non-permanent.
- ◆ Extension cords are not a safe solution if you do not have enough outlets. Have a competent electrician install additional outlets, with required electrical permit and inspection to assure safety.
- ◆ Do not use extension cords that have visible defects or wear.
- ◆ Extension cords should not be run inside wall cavities.
- ◆ Do not run extension cords under rugs. This might cause overheating and possibly a fire.
- ◆ Do not run extension cords through doorways. This causes a tripping hazard. Also, the cord can become pinched, which might cause overheating and possibly a fire.
- ◆ If you need to join two extension cords together (for a longer reach), make sure both cords are both the appropriate gauge to handle the extra length.

Power Strips—Power strips come in two basic types, consumer grade and commercial grade. Consumer grade is the most common type being used. Most devices of this type are made of plastic, which is very prone to melting or catching fire if the unit overheats. Commercial grade power strips have a modular construction and use simplex or duplex receptacles that protrude through the cover. Most of these strips are made of steel or aluminum. This type of construction will generally not melt or burn. Commercial strips are designed and built for a wider variety of uses.

- ◆ Power strips are not to be used in a moist or damp environment, or outdoors.
- ◆ Power strips are not a safe solution if you do not have enough outlets. Have a competent electrician install additional outlets, with required electrical permit and inspection to assure safety.
- ◆ Do not daisy chain power strips together.
- ◆ Use the correct power strip for the job—They should carry a UL (Underwriters Laboratory) or ETL (Electrical Testing Laboratory) rating label on them.
- ◆ Replace the power strip at the first sign of failure, overuse, overheating or visible defects or wear.



CELEBRATE NEW YEARS EVE AT LOWER ALLEN COMMUNITY PARK!

Come ring in the New Year with your neighbors at The Barn at Lower Allen Community Park. The Township is sponsoring an alcohol-free, family-friendly celebration that will begin at 8:00 pm and end at 12:00 am, following the "Lowering of the Breeches". Water and soda will be available, as will coffee, hot chocolate, and finger foods. A DJ will be there to provide music for your dancing and listening pleasure.

This event has been held for five years, and a good time is always had by all. In addition to music, there are games for both kids and adults, as well as an opportunity to have your picture taken with The Breeches. This year will also feature Breechie, a li'l pair of breeches for the kids to lower.

If you'd like to bring a canned good or other dry foods, a collection area will be set up for the Central PA Food Bank. Donations will also be accepted for the Township's K-9 Program. Many thanks to the New Year's Eve Celebration Committee for their fine work in putting this event together!

FIRE DEPARTMENT LIVE-INS WANTED



Are you a college student focusing on a career as a first responder? Do you have all mods and hazmat but want more? Lower Allen Fire Department's Live-In Program may be just the stepping stone you are looking for. A tuition reimbursement program helps you graduate with limited student loans while advancing in your training and experience as a fire fighter.

2 Stations · 650+ Alarms Annually · 3 Engines · 1 Truck · 1 Rescue ·
In-House Training · Paid Certification Training · Full Kitchen · Private Dorms ·
Computer & Wi-Fi Access · Washer/Dryer Facilities · Full Fitness Room

LOWER ALLEN FIRE CO.

2233 GETTYSBURG RD CAMP HILL, PA

***COLLEGE SCHOLARSHIP
WITH TUITION
REIMBURSEMENT
AND STIPEND***



Great environment to learn and experience life as a firefighter with unlimited mentoring opportunities geared towards your dream career.

Be a part of the team at Lower Allen Fire and
become a better firefighter than you were yesterday.

Don't put your dreams on hold, contact us today!
www.lowerallenfire.com

"Service Unto Others"

CURBSIDE YARD WASTE • BULK ITEM DISPOSAL • DAYLIGHT SAVINGS

Curbside Yard Waste Collection

The Township's yard waste recycling program started in April, with collection by your trash hauler on your regular trash day. Yard waste collection will proceed through the last week in November. Residents may bring their yard waste directly to the Public Works facility, located at 1400 St. Johns Road, Monday through Friday, between the hours of 7:00am – 3:00pm. The second Saturday drop off will end in November. **Lower Allen households are limited to four loads of brush (yard debris), per calendar year. A \$25.00 fee will be assessed for households exceeding their 4 load limit.**



Landscape Contractors working at properties in the Township may haul yard waste generated at those properties to the Public Works facility when accompanied by the resident, or with prior approval. A contractor's yard waste permit is required to be purchased by contractors using the facility.

Yard waste consists of garden debris, leaves, sticks, branches and stumps (no larger than 14 inches in diameter). Grass clippings and sod are NOT considered yard waste and should be bagged and put out with regular garbage, or composted.

Yellow yard waste bins should be used for smaller manageable amounts of debris. No trash bags or garbage should be mixed in with the yard waste. Branches must be bundled with twine or string, and not exceed 6 feet in length or 4 inches in diameter. Maximum weight is 45lbs. Yellow yard waste bins can be picked up at the Municipal Services Center during regular business hours. Unlimited amounts of yard debris may be placed curbside, using the previously stated guidelines.

BULK ITEM DISPOSAL

One bulk item per week can be picked up curbside by your trash hauler. For residents' convenience, four loads per household per calendar year can be brought to the Public Works facility. The business hours for dropping off items at Public Works is Monday – Friday between the hours of 7:00am – 3:00pm. For residents' convenience, the facility is open the second Saturday of the month 8:00am – 1:00pm, from April through November.

Bulk items - Household appliances, furniture, carpet and wooden items - (outdoor furniture, swings and landscaping timbers). Lawn mowers, snow blowers, trimmers, etc. (with all fluids removed) will also be accepted. **A \$25.00 fee will be assessed for households exceeding their 4 load limit.**

Shingles, concrete, dirt, paint, tires, oil, fuel, glass, pressurized tanks, TV's and Computer Equipment WILL NOT be accepted.

Please refer to the Cumberland County website, www.ccpa.net, for recycling guidelines and disposal locations for electronics and hazardous materials.



Yellow Yard Waste Recycling Containers are available at:
Municipal Services Center, 2233 Gettysburg Road, Camp Hill, PA 17011
Between the hours of 8 am and 4 pm, Monday-Friday.
Limit one per residence.



Daylight Savings Time ends Sunday, November 3, 2019! Don't forget when you change your clock, also change the batteries in your smoke detectors too!!!

SMOKE DETECTORS SAVE LIVES!!!!



CUMBERLAND COUNTY VECTOR CONTROL



COMMISSIONERS OF CUMBERLAND COUNTY

Vincent T. DiFilippo
Chairman

Jim Hertzler
Vice-Chairman

Gary Eichelberger
Secretary

Vector Control Weights & Measures

310 Allen Road Suite 701
Carlisle, Pennsylvania 17013
717-240-6349
717-240-7754 fax
www.ccpa.net/vector

A Note from the Cumberland County Vector Control: What's a Mosquito?

In our interactions with the public we have realized there are many misconceptions about what is and is not a mosquito. With the abundance of rain this spring there are many areas where mosquitoes are prevalent; however, every biting insect you encounter might not be a mosquito. A few insects that look similar to a mosquito are non-biting midges, crane flies, and wood gnats. The easiest way to tell if you have a mosquito is to look for the needle-like proboscis on the front of the insect, if it does not have one, it is not a mosquito. If you are being bitten and are not seeing any insects or are being overrun by gnats, this could mean you have a black fly problem. These insects often times come from moving water and the welts they leave can look similar to, and itch like, mosquito bites.



Pictured above is a crane fly, often mistaken for a mosquito, however they are not mosquitoes and do not bite. The biggest mosquitoes in the county are about a 1/2 inch.



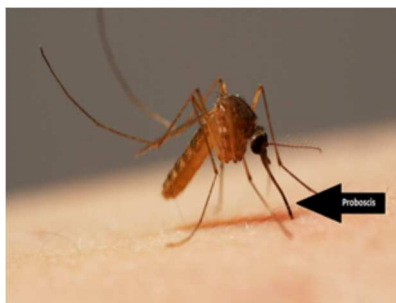
Pictured above is a wood gnat. They look extremely similar to mosquitoes, but notice they have no proboscis.



Pictured above is a midge. The term midge is a blanket term that refers to multiple flies. They can often bite, but possess no proboscis.



Pictured above is a pile of black flies with a finger for scale.



Pictured above is a mosquito, an arrow locating the proboscis.

Critters that bite include spiders, mosquitoes, flies and ticks, the bites are usually red, swollen and often itchy around the site.

Other critters that may bite if you are not seeing mosquitoes

SCOUT NEWS

Alex Armanini, son of Daniel and Heather Armanini of Lower Allen Township, completed his Eagle Scout project at the Lower Allen Public Works Building. Alex is a member of Boy Scout Troop 54 in Highland Park. There is an old farm pond at the Township's Public Works Facility that the Township would one day like to turn into a park. Alex cleared the area around the pond of trash, brush, deadfall and other debris, and recycled the plant material in the process.

Marcus Walko, son of Matthew and Shannon Walko of Upper Allen Township, completed his Eagle Scout project at Cedar Spring Run Park. Marcus is a member of Boy Scout Troop 300 of Mount Olivet United Methodist Church in Lower Allen Township. Marcus planted some evergreens near the Gettysburg Rd. entrance to the Park, and also installed birdhouses and bat houses in the Park.

Wyatt Paulus, son of Jim and Amy Paulus of Upper Allen Township, completed his Eagle Scout project at the Lower Allen Community Park. Wyatt is a member of Boy Scout Troop 300 in Mechanicsburg. Wyatt planted a row of Douglas Firs along the border between the Park and some homes on Main St. in Lisburn. The firs will serve as screen planting between the homes and the upper soccer field.

Board and Commission Volunteers Needed

Vacancies appear from time to time on the various boards and commissions that serve the residents of our Township. These boards and commissions include:

Planning Commission	Zoning Hearing Board	Sewer Authority	Development Authority
Recreation & Parks Board	Civil Service Commission	Stormwater Authority	

If you have a couple of hours a month to spare to engage with your fellow residents for the betterment of the community, then please send your resume and cover letter, indicating your areas of interest, to Township Secretary Helen Grundon. If you need information about what these boards & commissions do, please contact Township Manager Thomas Vernau at 975-7575 x 1001.

FALL IS HERE!

***"Professional, Yet Personal...That's My Bottom Line"**Bonnie K. Miller*

Important Dates and Info to Add To Your Fall Calendar...

School real estate and per capita taxes dated July 15 2019 are now due at the face amount. The last day to take advantage of the West Shore School District real estate and/or per capita tax bills at the face amount is Friday, November 1st. Please remember that a 10% penalty will automatically be added on November 2nd 2019.

You should have received a \$7,262 Homestead Exclusion on your July 1st, 2019 West Shore School District Real Estate tax bill, if you did not, perhaps you are a new homeowner or didn't apply for it, the next window to apply for the Homestead Exclusion is December 15, 2019 through March 15, 2020. You can obtain that form on Cumberland County's website, ccpa.net. If you take the \$7,262 Homestead Exclusion amount and multiply it by 11.9487 mils it equals \$86.77. Your assessment on your house will go back to the original assessment before the Homestead Exclusion since that only applies to the West Shore School District real estate tax bill. If there isn't a per capita tax bill enclosed with your real estate tax bill, please contact the Tax Office at 717-737-5671.

Tax Office Hours - Monday, Tuesday and Thursday from 10 a.m. to 2 p.m. or by appointment. If you stop by the Tax Office during the days it is closed, feel free to drop your payment in the grey box located next to the flagpole or the black pedestal mailbox outside my office door. You may also mail your payment. If you would like a paid receipt for your taxes, PLEASE include both copies of your tax bill and a self-addressed stamped envelope, so I can mail your receipt back to you.

Tax Office will be closed the weeks of October 14th-18th, November 25th-December 2nd, and December 23rd-January 1, 2020.

FREDRICKSEN LIBRARY • WEST SHORE REC NEWS

Fredricksen Library News

Friends Online Auction

Friday, November 1 – Thursday, November 14

Bid on the many items up for auction at the Friends of Fredricksen Online Auction. Visit www.fredricksenlibrary.org to view and place your bids on items – including gift cards, sports/concert tickets, decorative items and much more. All proceeds benefit the library.

Celebrate Diwali!

Saturday, November 2 from 1 pm – 5pm

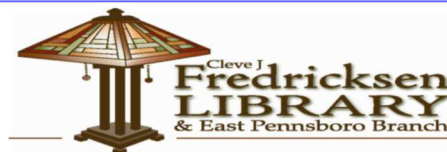
Join the library for an afternoon celebrating Diwali!

Holiday Book Tree

Place your loved ones name on the spine of a book for the 2019 holiday season on the Fredricksen Holiday Book Tree. Minimum donation \$10.

We have a variety of programs and activities for all ages taking place this fall and winter at the library! Visit our website at www.fredricksenlibrary.org for a complete list of events. Be sure to follow us on social media to stay up-to-date on our happenings. Look for us on Facebook, Instagram, Twitter and Pinterest.

Fredricksen Library 100 N. 19th Street Camp Hill, PA 17011 717-761-3900



Lower Allen Township partners with West Shore Rec to provide **YOU**, a variety of recreational services for the best value..

Fall Back Into Fitness and Discover What You Can Do!

Quality Services Provided for You – Take advantage of this benefit to develop new skills, boost confidence, improve your health and wellness, decrease your stress levels, and add joy to your life, for you and your family members!

Ready to get started? Visit West Shore Rec's website www.westshorerec.org for current programs or after August 21 for the complete "NEW" Fall Season brochure.

Fall 2019 includes:

- Active Wellness
- Sports
- Aquatics
- Enrichment
- Trips

Visit the WSRec office at 507 Fishing Creek Rd, Lewisberry
Or Visit West Shore Recreation at www.westshorerec.org or call 717-920-9515 for more details





Lower Allen Township

2233 Gettysburg Road · Camp Hill, PA 17011



***Election Day is Tuesday,
November 5, 2019.***

Polls are open from 7:00 AM to 8:00 PM

Don't forget to vote!



2020 Newsletter Subscription Form

- ☐ Yes! I am enclosing \$5.00 with this completed form. Sign me up today for delivery of the Township News to my mail box, for a one time payment of only \$5.00 for the entire year of 2020.

Name: _____ Phone#: _____

Address: _____

