



Spring 2020

TOWNSHIP NEWS

Lower Allen Township • 2233 Gettysburg Road • Camp Hill, PA 17011



Board of Commissioners

Board of Commissioners

Standing L to R: Carolyn Holtzman,
President Dean Villone and
Richard F. Schin;
Seated L to R: Vice President H. Edward
Black and Thomas Kutz

Inside this issue:

<i>Directory of Services, Calendar at a Glance, Fire Tax Article</i>	<i>Pages 2-3</i>
<i>Advertising, Garden Plots, Officials in Action, Tax Increase, New Resident Workshop</i>	<i>Pages 4-5</i>
<i>Building Safety, 811 Safe Digging, , 2020 Construction News</i>	<i>Pages 6-7</i>
<i>Spotted Lanternfly Updates, County Vector Control</i>	<i>Pages 8-9</i>
<i>Lisburn Community Fire Company Events, LA Alerts</i>	<i>Pages 10-11</i>
<i>MS4 Updates, Volunteers Needed, House Bill 1400, Ambulance Subscriptions</i>	<i>Pages 12-13</i>
<i>Stormwater Updates, Township Employee News</i>	<i>Pages 14-15</i>
<i>Residential Deck Safety, Swimming Pool Safety</i>	<i>Pages 16-17</i>
<i>Bulk Items, Trash Collection, Yard Waste, Residential and Commercial Recycling</i>	<i>Pages 18-19</i>
<i>Tax Office, Scout News, Fredricksen Library, West Shore Recreation News</i>	<i>Pages 20-21</i>
<i>LACP Events, Authority News, Ambulance Subscriptions, New Businesses</i>	<i>Pages 22-23</i>

Public Safety, Volunteerism, and Taxes



One of the core functions of local government is providing public safety to its residents. Lower Allen Township is fortunate to have exceptional Police and Emergency Medical Services in addition to two extraordinary volunteer fire companies providing protection to its citizens. The volunteer fire companies, however, have not been immune to the challenges facing volunteer organizations throughout the nation, namely a lack of volunteers for fire and rescue services. Lower Allen Fire Company No. 1 and Lisburn Community Fire Company have provided decades of service and it is the Township's intention that they continue to do so into the foreseeable future.

In order to ensure that the Public Safety services (Police, Fire, and EMS) are cost effective and meet the needs of the Township residents and its visitors, a Public Safety Ad Hoc Committee was established early in 2019 to look at the Public Safety needs of the township, the level of service to provide for that need, current capabilities, the gap between needs and current capabilities, and how to address the needs/capability gap.

The Public Safety Ad Hoc Committee consisted of community stakeholders such as residents, business leaders, members of Township government, and representatives of the public safety disciplines. Meetings were conducted 2-3 times a month for six months to review and discuss challenges affecting public safety and come up with solutions to provide an affordable level of service to the residents of the Township.

Continue on page 3

DIRECTORY OF SERVICES

Lower Allen Township

2233 Gettysburg Road • Camp Hill, PA 17011

Phone: 717-975-7575 • Fax: 737-4182 • www.latwp.org

Monday-Friday: 8:00 pm to 4:00 pm

Tax Office - Phone: 717-737-5671

Hours: Monday, Tuesday, Thursday 10:00 am - 2:00 pm

KEY STAFF

EXT

Thomas G. Vernau, Jr., Manager	1001
Erin G. Trone, Assistant Manager and Director of Community and Economic Development	1002
Donna Paul, Human Resources	1402
David L. Holl, Director of Public Safety	1601
Leon Crone, Police Captain	1515
Daniel Flint, P.E., Township Engineer and Director of Public Works	1101
Richard Grove, Finance Director	1202
Bryan Harshbarger, Public Works Coordinator	2106
Frank Wirth, Fire Captain	1311
Tony Deaven, EMS Captain	1810
David Murdoch, Fire Chief, Lower Allen Fire Co. No. 1	1302
Frank Williamson, Fire Chief, Lisburn Community Fire	717-766-3994

IMPORTANT NUMBERS

Emergency Police • Fire • EMS	9-1-1 (24-hours a day)
Non-Emergency & After Hours	717-238-9676
Poison Control Center	1-800-222-1222
PPL	1-800-342-5775
UGI	1-800-962-1212
PA American Water	1-800-565-7292
Lower Allen Sewer Authority	717-774-0610
Penn Waste (Trash & Recycling)	1-866-575-8720
Trash Complaints - call the Township	717-975-7575, ext. 1111
Cleve J. Fredrickson Library	717-761-3900
New Cumberland Public Library	717-774-7820
Joseph T. Simpson Library	717-766-0171
West Shore Recreation Commission	717-920-9515
Representative Sheryl Delozier 2929 Gettysburg Rd., Suite 6, Camp Hill, PA 17011	717-761-4665
Senator Mike Regan 1 East Harrisburg Street Dillsburg, PA 17017	717-432-1730
U.S. Representative Scott Perry	717-635-9504
U.S. Senator Robert Casey, Jr.	717-231-7540
U.S. Senator Pat Toomey	717-782-3951

CALENDAR AT A GLANCE

*All meetings are held at the
Lower Allen Township Municipal Services Center
(unless otherwise noted)*

APRIL

2 Sewer Authority - Cancelled	7:00 pm
2 Stormwater Authority - Cancelled	7:00 pm
10 Good Friday—CLOSED	
13 Board of Commissioners	7:00 pm
16 Zoning Hearing Board	7:00 pm
20 Development Authority	6:00 pm
21 Planning Commission	7:00 pm
27 Board of Commissioners	7:00 pm
22 Recreation and Parks Board	7:00 pm

MAY

7 Sewer Authority	7:00 pm
7 Stormwater Authority	7:00 pm
11 Board of Commissioners	7:00 pm
11—22 Tax Office	CLOSED
17 Lisburn Fire Co. Drive-thru Chicken Dinner	11—2 pm
18 Development Authority	6:00 pm
19 Planning Commission	7:00 pm
21 Zoning Hearing Board	7:00 pm
25 Memorial Day - CLOSED	
26 Board of Commissioners	7:00 pm
27 Recreation and Parks Board Park Tours	6:00 pm

JUNE

4 Sewer Authority	7:00 pm
4 Stormwater Authority	7:00pm
5—26 Tax Office	CLOSED
8 Board of Commissioners	7:00 pm
10 Recreation and Parks Board Park Tours	6:00 pm
14 Lisburn Fire Co. BINGO	Kitchen opens at 11:30
15 Development Authority	6:00 pm
16 Planning Commission	7:00 pm
18 Zoning Hearing Board	7:00 pm
22 Board of Commissioners	7:00 pm
24 Recreation and Parks Board Park Tours	6:00 pm

JULY

3 Independence Day—CLOSED	
9 Sewer Authority	7:00 pm
9 Stormwater Authority	7:00 pm
13 Board of Commissioners	7:00 pm
16 Zoning Hearing Board	7:00 pm
20 Development Authority	6:00 pm
21 Planning Commission	7:00 pm
22 Recreation and Parks Board	7:00 pm
27 Board of Commissioners	7:00 pm

The key items discussed by the Ad Hoc Committee included the current staffing levels of the Police Department and EMS departments to ensure they were at a level to provide current and future requests for services. This discussion resulted in the recommendation of additional Police Officers for the Police Department and additional Advanced Life Support providers for EMS.

The most complex issue addressed by the Ad Hoc Committee was discussing the viability of the volunteer fire service and the volunteer fire companies in the Township to provide effective and consistent fire and rescue services. Currently both fire companies are financially sound but are experiencing times when staffing is an issue. The recommendation of the Ad Hoc Committee was to implement an incentive program to recruit and retain more volunteers. Additionally, a college tuition reimbursement program for recruiting live-in firefighters has received increased funding, and the current fleet of fire apparatus is to be reduced by one fire engine as a cost savings while still meeting Insurance Service Organization (ISO) requirements.

In addition, a recommendation was made to start a part-time Public Safety Officer (PSO) program to supplement the six full-time PSOs, who are driver/operators of the fire apparatus, in order to cover times when volunteer staffing is low.

While these programs and initiatives cost money, they were established with the intent to stave off the possibility of a career fire department that would be much more expensive and result in a greater tax increase for the citizens of the Township. An example of a community with a similar population to Lower Allen Township is the Borough of Chambersburg that has primarily a career fire service. The 2020 budget for their Emergency Services Department is \$5.17 million, substantially greater than Lower Allen's current \$1.2 million budget for Fire Services and would require an *additional 2* mills of tax or about \$360 per average household annually. So, if you have the time and interest to serve the residents and visitors of Lower Allen Township please contact one of the fire companies to volunteer.

Chambersburg Fire Department

- Service Area: Chambersburg Borough, Franklin County
- Area: 6.9 Sq. Miles
- Population: 20,878
- Personnel: 25 Firefighters, 4 Captains, 2 Chiefs
- 2020 Budget: \$5,176,245.00
- Revenue Type:
 - General Operating Budget with Fire Tax in place

NEWSLETTER ADS • GARDEN PLOTS • OFFICIALS IN ACTION



ATTENTION: Businesses and Organizations, let us help you get your information in front of many Township News readers.

PriceAd Size# of Issues

\$250.00(3 1/2 x 2)4

\$75.00(3 1/2 x 2)1

\$600.00(6 1/2 x 4)4

\$175.00(6 1/2 x 4)1

To arrange for your ad to be published in the next quarterly issue, available in July, call 975-7575, ext. 1003 or email hgrundon@latwp.org.

Garden Plots

Springtime is here and it is time to think of getting outside and planting those flowers and fresh vegetables! The Township has a limited number of *FREE* garden plots, which are located at the Yellow Breeches Park along Sheepford Road. These plots are assigned on a "first reserve" basis, and only available to Township residents. If interested, please contact Wendy Hayden at 975-7575 ext. 2104.



BRIDGE FOR BEGINNERS-FREE INTRODUCTORY COURSE

Have fun, make new friends and exercise your brain
Learn to Play Bridge

Evening class: Tuesdays from 6:30-8:30 PM starting on April 7, 2020 and will run for 8 weeks

Daytime class: Mondays from 9:00-11:00 am starting on March 23, 2020 and will run for 8 weeks

Location: Harrisburg Bridge club
349 North 21st St. Camp Hill, Pa 17011

Cost: Free + \$12 for the book

Contact Information:

Mike Mendelson at mmendeloo@aol.com
Harrisburg Bridge Club at www.bridgeweb.com/harrisburg



OFFICIALS IN ACTION

The Board of Commissioners approved the following:

RESOLUTIONS

2020-R-01 Electing a Township Secretary, appointing an assistant secretary, and establishing compensation. (Adopted 1-6-2020)

2020-R-02 Renewing the appointment of a full-time Township Manager. (Adopted 1-6-2020)

2020-R-03 Recognizing Charles A. Clement, Jr. for his years of service as District Justice for Lower Allen Township. (Adopted 1-27-2020)

2020-R-04 Appointing Richard A. Dillon to the position of Maintenance Specialist. (Adopted 1-27-2020)

2020-R-05 Appointing Rebecca Davis to the position of Stormwater Program Manager. (Adopted 1-27-2020).

2020-R-06 Appointing Michael C. Houser to the position of Paramedic. (Adopted 1-27-2020.)

2020-R-07 Establishing an expenditure limit and fiscal policy for the general and fire funds. (Adopted 2-24-2020.)

2020-R-08 Authorizing the sale of Township property valued over \$2,000.00. (Adopted 2-10-2020).

2020-R-09 Authorizing the Township Manager to sign and submit the application for permit to install and operate traffic signals at the intersection of Carlisle Road, Cedar Cliff Drive, and I-83 to the Pennsylvania Department of Transportation. (Adopted 2-24-2020.)

2020-R-10 Authorizing the Township Manager to sign the Highway Occupancy Permit and Condition Statement for SLD Docket No. 2017-04, final subdivision Plan for 145 S. Locust Street. (Adopted 2-24-2020.)

2020-R-11 Proclaiming the month of April 2020 as "Pennsylvania 811 Safe Digging" month. (Adopted 2-24-2020.)

2020-R-12 Authorizing the Township Manager to sign Drainage Facilities Maintenance Agreement with the Pennsylvania Department of Transportation for the US 15-PA581 Project. (Adopted 2-24-2020.)

2020-R-13 Recognizing, commending and honoring Alex John Armanini for the attainment of the rank of Eagle Scout. (Adopted 2-24-2020.)

2020 PROPERTY TAX INCREASE • NEW RESIDENT WORKSHOP

2020 Property Tax Increase

By now you have received your 2020 Property Tax bills and noticed an increase. A large increase. About a 32% increase.

The increase is almost completely due to increases in Public Safety spending. For years we had been trying to hold police costs down by keeping our complement of officers down through attrition, but a 2018 staffing study indicated that we needed to add 4 additional officers within the next three years. One police officer adds about \$110,000 to the budget. Call volumes were increasing, response times were getting longer, and officers no longer had time to perform discretionary tasks such as house checks, community policing, or random speed enforcement. Just an 8 ½% increase in the police budget required an additional \$367,000.

In 2019, a Public Safety Ad Hoc Committee was formed to study Public Safety (Police, Fire, EMS, Emergency Management) service levels, and all were found to be below acceptable levels. The Committee's Final Report is available on the Township Website under Public Safety> PUBLIC SAFETY AD HOC FINAL REPORT.

EMS is struggling due to reduced Medicare and insurance company payments, and of course you've probably read about the volunteer staffing issues facing volunteer fire companies. Their budget was increased \$270,000 to give them the tools to recruit and retain volunteer firefighters. If the Township has to hire a paid department because of the lack of volunteers, it is likely that you will see taxes double.

The Board discussed and debated these issues long and hard prior to enacting the budget and decided that Public Safety needed more resources in order to provide adequate coverage for our residents. It was not an easy decision by any means, but the new tax rates are expected to carry us a few years into the future while overall services are evaluated.

New Resident Workshops

In the Fall of 2019 and then again in mid-February of 2020, Lower Allen Township hosted its first new resident workshops. The New Resident Workshop is a two-hour Saturday morning session hosted at the Municipal Services Center (Township Building) for the purpose of orienting people who have recently moved into the Township with the Township's services, and also the responsibilities of being a new homeowner in Lower Allen. A total of 24 residents have participated in the program so far.

The Township started to offer the program in response to the 2018 Lower Allen Township Comprehensive Plan, wherein residents expressed concerns about property maintenance in neighborhoods. It became clear that not all residents understood the requirements of local ordinances nor were they fully appreciating the breadth of resources available to them at the local government level. Topics presented at the workshop include:



- ◆ Overview of local government and Lower Allen statistics and facts
- ◆ What is Stormwater Management and Why Do I Pay a Fee?
- ◆ Property Maintenance and Fire Prevention
- ◆ Community Development- What Requires a Permit (And What Doesn't)
- ◆ Overview of Lower Allen's Public Safety Departments
- ◆ Overview of Lower Allen's 10 Parks
- ◆ Services Offered by Public Works
- ◆ Links, Subscriptions, and other Communication Resources for Receiving Important Lower Allen News Including Emergency Notifications

The next New Resident Workshop will be hosted in the Fall of 2020 and another will be scheduled for Spring 2021. New Residents include all residents who have been added to Lower Allen's tax base within the past six months, but all residents are welcome to attend. If you are interested in learning more about the New Resident Workshop, please contact Erin Trone, Assistant Manager at etrone@latwp.org or at 717-975-7575 ext. 1002.

BUILDING SAFETY MONTH • 811 SAFE DIGGING MONTH



MAY IS BUILDING SAFETY MONTH

May is Building Safety Month. May is the time to remember the dedicated members of the International Code Council. The Council brings together local, state and federal officials with expertise in the construction environment to create and implement the highest-quality codes in order to protect Americans from building failures. These buildings are where we live, learn, work, worship and play. The codes established by the Council are the most widely adopted building safety, energy and fire prevention codes in the nation, including the PA Uniform Construction Code. These building codes also include safeguards to protect the public from natural disasters such as hurricanes, snowstorms, tornadoes, wildland fires, floods and earthquakes.

Building Safety Month encourages appropriate steps everyone can take to ensure that the places where we live, learn, work, worship and play are safe and sustainable, and recognizes that countless lives have been saved due to the implementation of safety codes by local and state agencies. Residents are asked to consider projects to improve building safety and sustainability at home and in the community, and to acknowledge the essential service provided to all of us by local and state building departments, fire prevention bureaus and federal agencies in protecting lives and property.

Join us in thanking our Community and Economic Development Department for all their hard work in keeping our Township and residents safe. Great Job!

APRIL IS PENNSYLVANIA 811 SAFE DIGGING MONTH

April 2020 is recognized as "Pennsylvania 811 Safe Digging Month" across our Commonwealth, an initiative supported by Pennsylvania One Call Systems, Inc., a utility notification information center more commonly known as Pennsylvania One-Call. PA811 is celebrating its 48th year of continuous service to the Commonwealth of Pennsylvania.

This unique service provides an easy to use one-call notification about excavation projects which may endanger workers and jeopardize underground utility lines while promoting workplace and public safety, reducing underground utility damage and minimizing utility service interruptions while protecting the environment.

The Pennsylvania One-Call System began with only six utility companies in Western Pennsylvania and now serves more than 100,000 excavators and 3,600 critical underground infrastructure owners throughout the Commonwealth. The service annually receives more than 800,000 notification requests and transmits more than six (6) million notifications, providing protection to utility companies, their employees, customers, and the general public.

With economic development throughout Lower Allen Township and Pennsylvania growing, it is important to minimize the damage to underground utility lines, danger to workers, environmental pollution, and the loss of utility services. We encourage all residents, engineers, designers, excavators and homeowners to Dial 8-1-1 at least three business days in advance of an excavation project such as planting a tree, installing a mailbox post, building a deck or swimming pool or replacing a driveway. More information is available at the PA 811 website: <https://www.pa1call.org/PA811/Public/>



**Know what's below.
Call before you dig.**

2020 CONSTRUCTION PROJECTS

PUBLIC WORKS PROJECTS PLANNED – 2020 CONSTRUCTION SEASON

Street and Drainage Projects

- Street resurfacing in the Fair Oaks neighborhood:
 - * Colonial Drive
 - * Woodbox Lane
 - * Kylock Road
 - * Firethorn Lane
- Street resurfacing in the Cedar Cliff Manor neighborhood:
 - * Columbia Drive
 - * Clemson Drive
 - * Citadel Drive
 - * Cornell Drive
 - * Amherst Drive
 - * Grinnell Drive
 - * Chelten Circle
- Microsurface paving on Hartzdale Drive, between Utley Drive and Slate Hill Road
- Drainage work: 1600 block Sheepford Road

Parks Projects

- Reconstruction of the Fun Fort at Lower Allen Community Park

GETTYSBURG ROAD REALIGNMENT PROJECT

- A contract has been awarded to realign a portion of Gettysburg Road in Lower Allen Township. The roadway realignment will begin near the intersection of Gettysburg Road with Audubon Road, and continue in a northerly direction to intersect Wesley Drive at the existing intersection with Century Drive. The western approach of the intersection of Gettysburg Road with Wesley Drive will be removed. A new drainage channel will be constructed. Modifications will be made to two existing signalized intersections on Wesley Drive at Gettysburg Road and Century Drive.
- This project is being constructed jointly by Lower Allen and Upper Allen Townships.



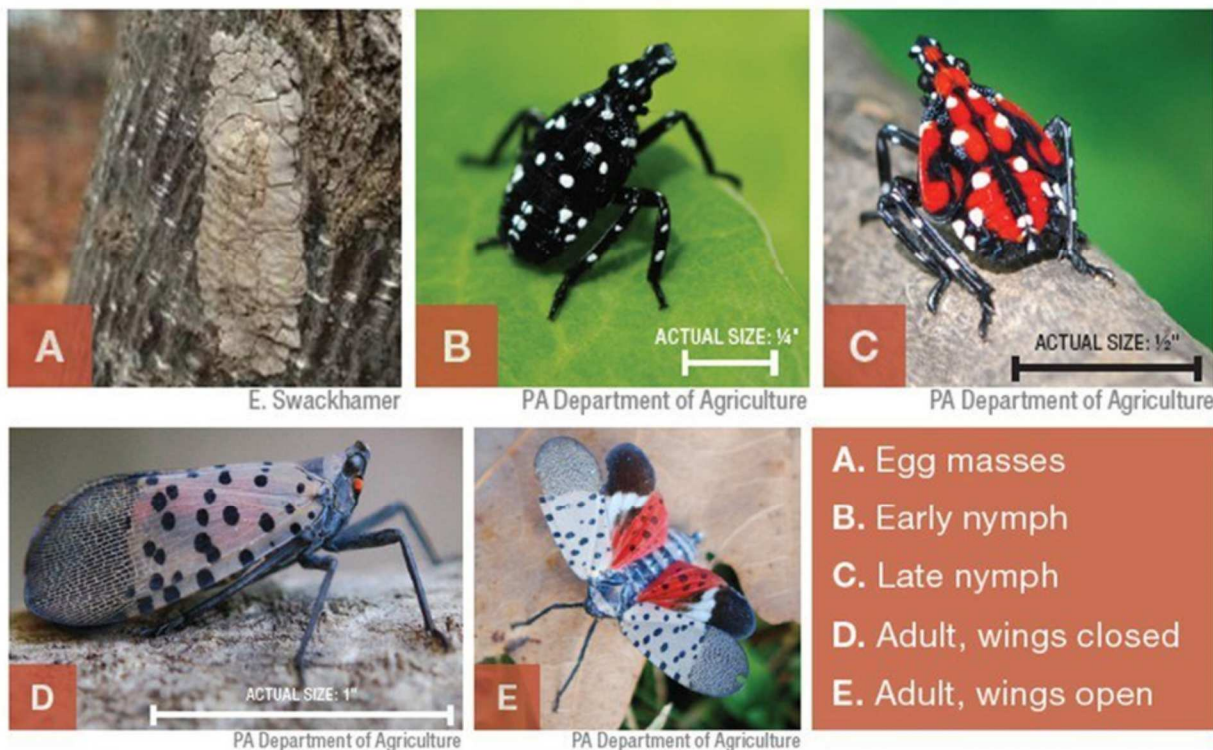
SPOTTED LANTERNFLY UPDATE

The Pennsylvania Department of Agriculture designated Cumberland County as a quarantined zone for the spotted lanternfly in March of 2020. The Spotted Lanternfly (SLF) is an invasive insect native to Southeast Asian countries. It was first discovered in Pennsylvania in Berks County in 2014 and has spread to other counties in the southeast portion of the Commonwealth over subsequent years. This insect has the potential to greatly impact agricultural crops such as grapes, hops, tree fruit, and hardwoods in our area.

Spotted lanternflies go through five stages of growth after hatching from eggs (refer to the life cycle diagram below.) SLF live through winter only as eggs. Adults lay eggs in masses in late fall on trees, under bark, lawn furniture, cars, grills, and many other surfaces. SLF adults emerge in July and are active until winter. The adults and immatures of this species damage host plants by feeding on sap from stems, leaves, and the trunks of trees. The preferred hosts of the SLF are: Tree of Heaven, fruit trees, pine trees, hops, and grape vines.

The insect is easily detected by inspecting your vehicles, trailers, or any outdoor items before you move in and out of any quarantine area. When you travel, check your car and outdoor equipment (grills, outdoor furniture, landscaping supplies, mowers, etc.) for egg masses. Remember that egg masses may be underneath your car or in your wheel well. If you do find an egg mass, you can scrape them off using a plastic card or putty knife and place them in a container filled with rubbing alcohol or hand sanitizer. Egg masses can also be smashed or burned. In addition, check for nymphs and adults that can easily be transported, and keep your windows rolled up when you park.

SLF sightings should be reported to the Pennsylvania Department of Agriculture at their SLF hotline number 1-888-4BAD-FLY. Sightings can also be reported online to Penn State Extension at the following link: <https://extension.psu.edu/have-you-seen-a-spotted-lanternfly>. Reports within the quarantined counties are registered in a database for the USDA and PA Department of Agriculture. The database is used to help determine properties for treatment. Please join the effort to control and prevent the spread of SLF. We need everyone to protect their properties, communities, and the Commonwealth from this invasive insect that has the potential to change our landscape and impact the quality of life in Pennsylvania.





COMMISSIONERS OF CUMBERLAND COUNTY

Vector Control Weights & Measures
310 Allen Road Suite 701
Carlisle, Pennsylvania 17013
717-240-6349
717-240-7754 fax
www.ccpa.net/vector

Vincent T. DiFilippo
Chairman
Jim Hertzler
Vice-Chairman
Gary Eichelberger
Secretary

In September 2014, the Spotted Lanternfly was found in Berks County, PA. This insect is native to Asia and was most likely transported here on goods imported from China. These insects are known to be quite destructive to agricultural crops and forest habitats with the ability to cause a strain on the farming community here in the state. They hitchhike on vehicles that stay overnight in quarantined areas. Cumberland County was added to the list of quarantined counties, in an effort to stop the spread of this invader. If you see a Spotted Lanternfly report it online at <https://services.agriculture.pa.gov/SLFReport/> or on phone by calling 1-888-4BADFLY. **SMASH IT! KILL IT! CHECK YOUR VEHICLES WHEN LEAVING A QUARANTINED ZONE! DESTROY ANY EGG MASSES YOU FIND!** One egg mass can hold 30-50 eggs.



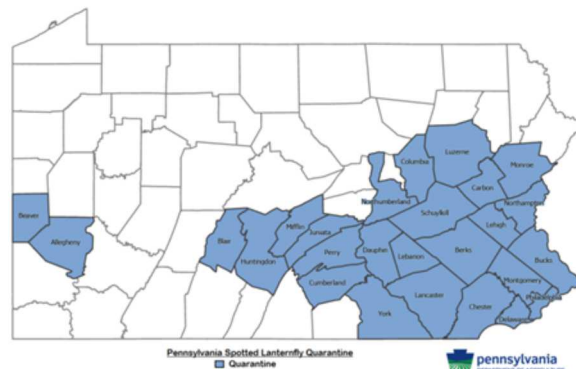
Pictured are adult Spotted Lanternflies on a mass of grapes.



Pictured is an adult Spotted Lanternfly with its wings open.



Pictured is the life cycle of the Spotted Lanternfly from egg mass to adult.



Pictured are quarantined zones as of March 2019.

All information and pictures provided by PA Department of Agriculture and Penn State.

Marcus Snyder
Public Health Technician
717-240-7808
717-448-5405 mtsnyder@ccpa.net

310 Allen Road Suite 701 Carlisle, PA 17013 717.240.6349
E-mail: vector@ccpa.net Web: www.ccpa.net/vector

Lisburn Community Fire Company

The officers of the Fire Company have been in constant touch concerning the current situation our Country is facing. We are committed to protecting our neighbors and our Community and have therefore decided to follow the CDC's advice. ***At this time, we are canceling all April events including our Palm Sunday Roast Beef Dinner (April 5th) the Easter Egg Hunt (April 11th) and also our April Bingo (April 19th).*** This decision has not been taken lightly, as these are critical fundraisers for our organization. Thank you, as always, for your support and understanding. **We hope things return to normal soon and are planning for our May and June events. If these later events need to be postponed, notices will be posted on the website and Facebook.**



THANK YOU COMMUNITY **YOU MAKE A DIFFERENCE!!!**

A big thank you to everyone who came out to our February Bingo and March Turkey Dinner. The profits from these events help us pay our operating costs and keep our apparatus ready for calls. Thank you for coming out and supporting us with these fundraisers. We look forward to seeing you at our next event.

SUNDAY-MAY 17

DRIVE-THRU BBQ CHICKEN DINNER



Dinners available from 11:00-2:00 or until sold out. Dinner includes 1/2 BBQ Chicken, Baked Potato, Apple Sauce, Roll & Butter and Bottled Water. Picnic tables available if weather permits. Price is \$9.00.

SUNDAY-JUNE 14TH-BINGO



There will be regular & special games of bingo and a final jackpot. The doors and kitchen open at **11:30am**. Early bird bingo starts at **1:00pm** and Bingo starts at **1:30pm**. There will be small games of chance available. Tickets are \$22 before the event or \$25 at the door. Additional cards will be available for purchase. For more information or tickets check our website or Facebook page. Please call Darla at 717-938-9428 or the Fire Company. **PLEASE NOTE THE TIME CHANGES!**

1800 Main Street, Lisburn Mechanicsburg

(717) 766-3994

www.lisburnfire.org

LisburnFire24@gmail.com



LA ALERTS • BARN RENTALS



Receive Lower Allen Community Notifications

Subscribing is easy! Simply go the Township web page at www.latwp.org and click on **LA Alerts** under the Police & Public Safety News link. Here you will be able to create an account and list the phone numbers and email addresses you wish to be included as contacts. **Please include your street address during the registration process.** You can also then choose the level of contact and join contact groups. If you have any difficulty, you can also subscribe by calling us at 717-975-7575 Ext. 1602 and we will assist you in registering.

If you do not have access to a computer, please complete the form below and mail to Lower Allen Township, 2233 Gettysburg Road, Camp Hill, PA 17011, Attn: LA ALERTS (or use the drop box near the flag pole in our parking lot).



Please PRINT

I am a Lower Allen Township: ___Resident___Business

NAME AND ADDRESS

Resident or Business Name: _____

Street Address: _____

Apartment or Suite #: _____ City: _____ Zip: _____

PHONE AND EMAIL

Phone (HOME): () ____-____

Phone (CELL): () ____-____ Circle One (TEXT or VOICE) EMAIL: _____

Phone (CELL): () ____-____ Circle One (TEXT or VOICE) EMAIL: _____

Phone (CELL): () ____-____ Circle One (TEXT or VOICE)

GROUP SUBSCRIPTIONS

I would like to subscribe to the following groups: ___ Emergency Alerts ___ Flood Plain Alerts ___ TMI Alerts
___ Leaf/Trash Pick-up ___ Weather Alerts ___ Township Newsletters/Events ___ LA Business Owner/Operator

The Barn at Lower Allen Community Park

Weddings and Receptions • Family Reunions • Birthday Parties • Bridal Showers • Baby Showers • Company Picnics • Meetings

Fully Renovated, But Still Has a Rustic Touch

Upper Level - Seats up to 120 people
Lower Level - Seats up to 50 people

Each level offers a kitchen area, equipped with: Microwave • Large Sink
Full Size Refrigerator with Freezer • Use of Gazebo • Tables and Chairs

For Rental Availability,
Contact: Wendy Hayden
whayden@latwp.org
975-7575, ext. 2104



Lower Allen Community Park
4075 Lisburn Road
Mechanicsburg, PA 17055

MS₄ UPDATES

MS₄ (MUNICIPAL SEPARATE STORM SEWER SYSTEM) UPDATE PROTECT OUR WATERSHED

SPRING TIPS



MEASURE

Always follow directions to use proper amounts of fertilizers and herbicides. Too much can wash off your property into storm drains and can harm aquatic life.



REUSE

Keep grass at least 3" to promote healthy root growth. Dispose of clippings in a compost pile or yard waste bag so they don't wash into storm drains. Clippings also make great natural mulch!



CARE

Have a spill kit handy to immediately clean up any spills in your driveway or the road like gas and oil leaks. Report any major spills to the Township, at www.latwp.org, or 717-975-7575.



CONSERVE

Watch your watering! Lawns only need about 1" of rain per week. Overwatering can result in runoff, which can carry fertilizers and herbicides along with it. Avoid watering during mid-day.



CLEANUP

Get involved in a local stream cleanup. Check out the Yellow Breeches Watershed Association's website: www.ybwatershed.org, for updates on stream cleanup dates and events.



WASH

Wash cars at a commercial carwash, where wash water is connected to sanitary sewers and treated. At home, wash your car in the grass, not driveway and direct the soapy water away from storm drains.

Visit www.latwp.org and click on MS₄/Stormwater - for more ways to help clean up our stormwater runoff!

LEAVE IT ON YOUR LAWN



VOLUNTEERS NEEDED • PROPOSED HOUSE BILL 1400

LOOKING FOR VOLUNTEERS FOR A PARKS & RECREATION AD HOC COMMITTEE



Township staff would like to convene an Ad Hoc Committee to study and provide some future direction on parks and recreation in Lower Allen Township. Parks and recreation are important to the quality of life in Lower Allen Township, and in a time of more competition for limited resources parks and recreation should not be forgotten. Current and future needs may not be the same as what was

provided in previous years.

Residents who are interested in providing input into future parks and recreation resources are sought to sit on a committee being formed to study these resources. Meetings will be held on a monthly basis for about a six-month period beginning this Spring.

If you are interested in participating in this important initiative, please contact the Township Manager at tvernau@latwp.org or (717) 975-7575.

House Bill 1400 – Small Wireless Facilities

High-speed internet service is essential for economic growth, educational advancement, quality healthcare, and the protection of public safety. Pennsylvania municipalities have already approved hundreds of applications for small wireless facilities in the public rights-of-way for this very reason. “Small wireless facilities” are antennas generally placed in neighborhoods atop existing structures such as telephone poles or streetlight poles and are usually no larger than a trash can or small cabinet. The companies installing these antennas currently must follow local ordinances when placing them in the public right-of-way. However, a bill currently in the Pennsylvania House of Representatives would change that. **House Bill 1400**, entitled “Small Wireless Facilities Deployment,” would preempt local zoning authority over the management of these wireless facilities.



Local zoning authority is a longstanding tenet of federal and state law. The federal Telecommunications Act explicitly preserves local zoning authority over wireless facilities. This authority is subject to certain limitations, which have been expounded upon by the FCC on multiple occasions. Most recently, the FCC’s 2018 Wireless Order (“Order”) prescribed further restrictions on municipal authority over newly-defined “small wireless facilities”.

If passed, HB 1400 would take away a municipality’s right to manage the public right-of-way and turn that authority over to broadband companies and their contractors. These companies would be able to place poles and antennas anywhere within the public right-of-way that they deemed to be advantageous, even if that location happened to be in front of a residential property. Under current law, the companies must work within the municipal ordinances to locate such facilities in a less intrusive manner.

It would be misguided for the Commonwealth to eliminate municipal zoning authority when the expert agency tasked with promoting wireless deployment, the FCC, acknowledges that municipalities play a role in ensuring that such deployment is undertaken responsibly. It would be a mistake to remove from the process the only level of government that has the experience and expertise to protect public safety and manage all facilities in the public rights-of-way.

If you are opposed to the Commonwealth taking away municipalities’ rights to determine how the public rights-of-way are used, please contact your local House Representative, Sheryl Delozier, at (717) 761-4665 and ask her to vote “NO” on House Bill 1400.

STORMWATER UPDATES

2020 Stormwater Projects – Your Stormwater Fees at Work!

As part of our Pollution Reduction Plan (PRP) mandated by the Pennsylvania Department of Environmental Protection (PADEP), Lower Allen Township will be retrofitting two stormwater detention basins into Bioretention Facilities this year on Township owned property. The project locations are as follows:

Lower Allen Township Public Works Facility - 1400 Saint Johns Road, Camp Hill – basin is located in front of the public works building along Saint Johns Road.

Sheepford Crossing West – Basin is located at the intersection of Lisburn Road and Sheepford Road.

The projects are going out to bid this spring with construction beginning late spring/summer. Completion is expected by October of this year. The basins are required to be retrofitted due to a federal mandate from the Environmental Protection Agency (EPA) and PADEP to remove pollutants from the Township's stormwater runoff. Retrofitting the basins from detention basins into bioretention facilities will reduce the pollutants that enter our stormwater runoff that reaches the Cedar Run, Yellow Breeches Creek, Susquehanna River, and eventually the Chesapeake Bay.

The retrofit projects will involve several steps:

1. Excavate and remove existing soil in basin bottom.
2. Amend topsoil by combining it with compost to create a higher level of soil porosity.
3. Plant native plants with deep root systems in the basin bottom to filter out pollutants and infiltrate stormwater.
4. Construct a stone berm at the outlet structure of the basin to hold a shallow volume of water for a short period of time to retain runoff from small storms for treatment and infiltration.

There will be additional stormwater basin retrofit projects in Lower Allen Township in the coming years as part of our PRP. Look for stormwater project updates in future articles of the Township Newsletter. If you have any questions regarding any of the upcoming projects please contact Rebecca Davis, Stormwater Program Manager, at rdavis@latwp.org, or 717-975-7575 ext. 1010.

**Lower Allen Township Public Works Facility
(Existing Conditions)**



**Sheepford Crossing West Basin
(Existing Conditions)**



TOWNSHIP EMPLOYEE NEWS

Lower Allen Township is proud to recognize the following employees for their years of service. The employees were formally recognized at a Recent Board of Commissions Meeting. All of our employees provide a valuable service to the residents and we hope you'll join us in applauding their milestones.

NAME	YEARS/HOURS	STATUS	JOB TITLE	DEPT.
Tina Harbold	5 Years	Full-Time	Receptionist	Finance Department
Ryan Turpin	5 Years	Full-Time	Maintenance Specialist	Public Works Department
Kenneth Stirling	5 Years	Full-Time	Police Officer	Police Department

Commendation letters were presented to Fleet Manager Charlie Reynolds and Mechanic Aaron Duncan for the innovative efforts they put forth by working diligently on fabricating the road snow blower to fit the new John Deere tractor.



Left: Fleet manager Charlie Reynolds

Right: Mechanic Aaron Duncan



At their Reorganization Meeting of January 6th, the Commissioners appointed/reappointed the following persons to the respective boards and commissions:

- ⇒ Bruce E. Seagrist to the Lower Allen Township Vacancy Board
- ⇒ Ronald A. Massott to the Lower Allen Township Zoning Hearing Board
- ⇒ Alison J. Shuler to the Lower Allen Township Stormwater Authority
- ⇒ Alison J. Shuler to the Lower Allen Township Authority
- ⇒ Peddrick M. Young, Sr. to the Lower Allen Township Development Authority
- ⇒ Brett P. McCreary to the Lower Allen Township Planning Commission
- ⇒ Jeffrey M. Logan to the Lower Allen Township Planning Commission
- ⇒ Scott W. Duncanson to the Lower Allen Township Recreation and Parks Board
- ⇒ Terry L. Lenker to the Lower Allen Township Civil Service Commission



From left to Right: Ronald A. Massott, Brett P. McCreary, Peddrick M. Young, Jeffrey M. Logan and Scott W. Duncanson.



RESIDENTIAL DECK SAFETY

RESIDENTIAL DECK SAFETY TIPS

A properly constructed and maintained deck can provide a great place to enjoy many hours of outdoor leisure time. A poorly constructed and/or maintained deck can cause bruises, sprains and fractures, or worse.

Deck failures are becoming more frequent in the U.S. due to aging structural materials on older decks, excessive loading (such as hot tub placement with inadequate structural support), and as a result of improper deck construction methods. A web search of “residential deck failures” will show you prime examples of what can go wrong with a deck. Thankfully, this same search will yield a wealth of information about code-compliant deck design and installation, as well as maintenance recommendations.

If you have an existing deck, check for loose, corroded or missing hardware at connections. Inspect metal connector plates and joist hangers, screws, nails and bolts. Look at all locations where lumber components of the deck are connected to something—joist to house, joist to beam, beam to post, and post to footing. Also check for significantly cracked or rotten wood, loose deck boards, loose or improperly spaced fall protection (guards and rails), missing or hard-to-grasp handrails, and improperly built stairs.

If you are planning to reconstruct or alter an existing deck, or build a new one, here are some important requirements:

- Current wood preservatives are generally less toxic, but more corrosive than preservatives used when chemically decay-resistant lumber was first introduced. Aluminum flashing between the house and deck, and lightly galvanized steel connectors, can become badly corroded in just a few months. Ask your lumber and hardware supplier to verify compatibility of materials, or use stainless steel connectors and corrosion resistant flashing.
- Where no portion of a deck is greater than 30 inches above the surrounding ground surface, fall protection is not required; however, installation of guards and rails is still recommended.
- A construction permit is not required when a deck will be self-supporting (not attached to the house) and will have no portion greater than 30 inches above the surrounding ground surface; however, a zoning permit is required for all new decks and deck enlargements.
- A zoning permit is required to verify that the deck does not exceed allowable encroachment into required yards (too close to a property line). If the deck construction will not allow precipitation to pass through and soak into the ground, we also verify that the deck area will not cause property improvements to exceed the allowable limit of impervious lot coverage.
- A construction permit is required for new decks (except as noted above), structural repairs, additions, and alterations to required safety components. You will need to submit stair, rail and guard details, framing and load path connection plan, materials list, cost estimate and site plan.

You can download a General Permit Application and a code compliance checklist for decks on the Community and Economic Development Department (CED) page at www.latwp.org. The form and checklist should also be used to request zoning approval as explained above.

The American Wood Council publishes an excellent resource, the Prescriptive Residential Deck Construction Guide (DCA-6). This guide is compatible with the 2015 edition of the International Residential Code, the building code currently used in Pennsylvania. A free download is available at <https://www.awc.org/codes-standards/publications/dca6>

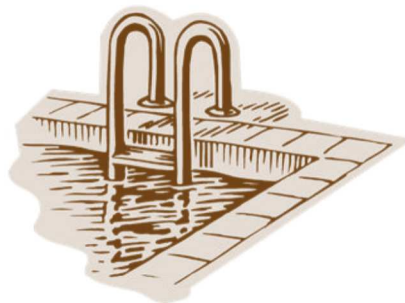
If you need assistance to plan the installation, repair or alteration of a deck, please contact the codes enforcement staff in the CED Department. May is International Building Safety Month, so why not improve your peace of mind by scheduling a free deck safety inspection with one of our certified construction code officials.



SWIMMING POOL SAFETY

SWIMMING POOL SAFETY ALERT

Because the outdoor swimming season is approaching, we are urging our readers to become familiar with pool safety regulations. Whether you already own a pool, are thinking of purchasing one, or enjoy the pool of a neighbor or friend, observing these safety guidelines could prevent an accidental injury or death.



The PA Uniform Construction Code (UCC) regulations adopt standards published by the International Code Council pertaining to design, structural, electrical, plumbing and safety barrier aspects of swimming pools, hot tubs and spas. The Lower Allen Township Community and Economic Development Department (CED) staff enforces these regulations through the plan review, permit and inspection process. Here are some essential UCC requirements:

- **The UCC applies to any structure intended for swimming or bathing that contains water over 24" deep**, including inground and onground pools, hot tubs and spas. Portable and permanent installations are regulated.
- **Providing and maintaining an adequate barrier is essential to restrict pool access, which minimizes the chance of accidental drownings. Many drowning victims are residents or guests of the household where the pool is located, so a barrier or door alarms are also required between the home and the pool.**
- Many hot tubs and spas are sold with cover assemblies that provide the required safety barrier. Otherwise, a barrier of at least 4' high must be provided for all types of pools. Self-closing and self-latching gates must swing outward. Latch locations and fence openings are regulated to make it difficult for small children to open gates, or to climb through or over safety barriers.
- The side walls of above-ground pools do not meet this barrier requirement if they are less than 4' high, or if pool access is provided by an adjacent elevated deck. Please remember to remove ladders or lock them in the upright position when an above-ground pool is not in use.
- Code compliance for portable pools, hot tubs and spas can be as simple as assuring that the required barrier is provided, the water supply is protected from back-flow (no protection can cause contamination of drinking water), and the electrical supply is equipped with a ground fault current interrupter (protects against electrocution).
- In-ground pools and permanent onground pools must also meet other standards for bonding of metallic parts (electrical safety) and plumbing requirements (to ensure proper sanitation by the filter system, and entrapment protection at suction outlets).
- Safety glazing is required for any glass areas near a pool, and there are restrictions on locations of electrical receptacles, fixtures and overhead power lines.

You can download a General Permit Application and a code compliance checklist for swimming pools on the Community and Economic Development Department page at www.latwp.org. The form and checklist also cover zoning regulations that apply to swimming pools, such as percentage of lot coverage, setback distance from side and rear lot lines, and location outside of flood hazard areas.



If you need assistance to plan the installation of a new swimming pool or would like to upgrade the safety aspects of an existing pool, please contact the codes enforcement staff in the CED Department. May is International Building Safety Month, so why not improve your peace of mind by scheduling a free pool safety inspection with one of our certified construction code officials.

BULK ITEMS • TRASH • YARD WASTE

BULK ITEM DISPOSAL

One bulk item per week can be picked up curbside by your trash hauler. For residents' convenience, four loads per household per calendar year, can be brought to the Public Works facility. **A \$25.00 fee will be assessed for households exceeding their 4 load limit.** The business hours for dropping off items at Public Works is Monday – Friday between the hours of 7:00am – 3:00pm. For residents' convenience, the facility is open the second Saturday of the month 8:00am – 1:00pm, from April through November. **Note: Penn Waste has suspended bulk item pickup until further notice.*

Bulk items - Household appliances, furniture, carpet and wooden items - (outdoor furniture, swings and landscaping timbers). Lawn mowers, will be accepted and must have the oil and gas and tires removed before disposal.

Shingles, concrete, dirt, paint, tires, oil, fuel, glass, pressurized tanks, TV's and Computer Equipment WILL NOT be accepted.

Please refer to the Cumberland County website, www.ccpa.net for recycling guidelines and disposal locations for electronics and hazardous materials.

Leaf Compost and Wood chips

Leaf compost and wood chips are available to Township residents for delivery or pick up at the Public Works facility. All leaf compost and wood chip deliveries will be made on Thursday and Friday mornings through early November. Public Works staff will load leaf compost and wood chips for you, if available.

Deliveries will be made only on a prepay basis. Payment must be made prior to setting up a delivery date. All payment are to be made at the Municipal Services Center. When your payment is processed, you will be contacted for a delivery date. Delivery forms can be found on the Township website or can be filled out at the time of payment.

Please contact Wendy Hayden, weekdays between 7am -3pm, 975-7575 Ext. 2104 or whayden@latwp.org

Wood chips and leaf compost are free if residents pick them up at the facility.

Delivery prices:

Wood chips - (3 cubic yds.) \$5.00 (8 cubic yds.) \$10.00

Leaf compost - (3 cubic yds.) \$35.00 (8 cubic yds.) \$50.00

Curbside Yard Waste Collection

The Townships yard waste recycling program generally starts in April and will be collected by your trash hauler on your regular trash day. However, Penn Waste has suspended yard waste pickup until further notice. Yard waste collection will proceed through the last week in November. Residents may bring their yard waste directly to the Public Works facility, located at 1400 St. Johns Road, Monday through Friday, between the hours of 7:00am – 3:00pm. The second Saturday drop off will be offered starting in April and ending in November. **Lower Allen households are limited to four loads of brush (yard debris) brought to Public Works per calendar year. A \$25.00 fee will be assessed for households exceeding their 4 load limit.**

Yard waste consists of garden debris, leaves, sticks and branches and stumps (no larger than 14 inch diameter). Grass clippings and sod are NOT considered yard waste and should be bagged and put out with regular garbage, or composted.



Yellow yard waste bins should be used for smaller manageable amounts of debris. No trash bags or garbage may be mixed in with the yard waste. Branches must be bundled with twine or string, and not exceed 6 feet in length or 4 inches in diameter. Maximum weight is 45lbs. Yellow yard waste bins can be picked up at the Municipal Services Center during regular business hours. Unlimited amounts of yard debris may be placed curbside, using the previously stated guidelines.

Yellow Yard Waste Recycling Containers are available at:

Municipal Services Center, 2233 Gettysburg Road, Camp Hill, PA 17011

Between the hours of 8 am and 4 pm, Monday-Friday.

Limit one per residence. Additional or replacement containers available for a \$10 fee.

RESIDENTIAL AND COMMERCIAL RECYCLING

Recycling for Commercial Establishments

Businesses within the Township must contract their own recycling and trash pick-up. This means that while residents in Lower Allen will all use Penn Waste, the current contracted hauler, businesses may select a hauler of their choice. Recycled materials for commercial, institutional and municipal establishments include:

- ⇒ High-grade office paper
- ⇒ Aluminum cans
- ⇒ Glass food and beverage containers
- ⇒ Corrugated paper
- ⇒ Plastics #1, #2, #5 and PET

Contracted haulers will provide the Township with the tonnage of recycled goods collected within the Township on an annual basis for the purposes of reporting for the 904 Department of Environmental Protection Recycling Performance Grant which provides the Township with funding based on a percentage of the total tons of recycled goods.

What Can I Recycle?

It is true that China, the largest purchaser of recycled materials from the U.S., has changed its regulations for recycled materials, and it is accepting smaller amounts of contaminated materials. But, what does that mean for Lower Allen residents? It means that residents need to pay attention to how and what they place in the recycling bin, as contaminated recycled goods will simply be thrown out.

- Cardboard
 - Flatten
 - Remove all bubble wrap, packing peanuts, shipping slips, plastic bags, etc..
 - Do not put it out in the rain, wet cardboard is hard to process
- Newspaper
 - Do not put out in rain
 - If possible, place on bottom of bin, so they do not blow away
- Plastic Bottles (#1, #2, & #5)
 - Remove caps
 - Rinse thoroughly
 - Labels and neck rings do NOT need to be removed
- Metal & Aluminum Cans (Soup cans and soda cans)
 - Rinse thoroughly
 - Remove plastic caps
 - Labels do NOT need to be removed
- Cartons
 - Remove straws
 - Rinsed thoroughly and emptied
- Glass (food and beverage glass only)
 - Rinse thoroughly
 - Remove tops
 - Labels do NOT need to be removed



TAX OFFICE • SCOUT NEWS

QUARTERLY TAX TIPS

It's time to spring into action, if you haven't already...The 2020 Lower Allen Township and Cumberland County real estate taxes were dated March 1st and mailed. You will notice an increase in Lower Allen Township Real Estate and Fire Service taxes. Please refer to latwp.org website regarding the increase in the 2020 budget, or you can obtain a LATWP newsletter in the Township building if you don't have access to a computer.

Due to constant reselling of mortgages and frequent homeowners refinancing, we mail all real estate taxes to the property owner. If your taxes are in an escrow account, we ask that you write your loan number on the tax bill and promptly forward one copy to your bank or mortgage company, so they can pay your real estate taxes during the discounted period.

2020 Dog Licenses are available in the Tax Office during regular hours. By law, dogs three (3) months and older must be licensed. We issue dog licenses for Cumberland County only. If you wish to purchase a life-time dog license Kelly Neiderer, Treasurer at the Cumberland County Courthouse is the only person able to sell life-time dog licenses for Cumberland County residents.

Spring Bargains for Seniors...Property Tax Rebate – Rebates are offered to Pennsylvanians 65 and older who are homeowners and total income from all sources is less than \$35,000 (including ½ of your social security). If you are a senior 65 and older and are renting, your total income must be less than \$15,000 from all sources (including ½ of your social security). Funds for the tax rebates come from the Pennsylvania State Lottery. Forms are available in the Tax Office. If you desire assistance in completing the forms, please call me at (717) 737-5671. **TAX OFFICE HOURS: Monday, Tuesday and Thursday from 10 a.m. to 2 p.m. or by appointment**

If you stop by the Tax Office during the days it is closed, feel free to drop your payments in the mailbox outside the tax office door or in the gray box located next to the flagpole. If you would like a paid receipt for your taxes, PLEASE include both copies of your tax bills and a self-addressed stamped envelope, so I can mail your receipt back to you.

“Professional, Yet Personal...That's My Bottom Line”

The Tax Office will be closed: May 11th-22th and June 5th-June 26th

SCOUT NEWS

Alex Armanini, son of Daniel and Heather Armanini of Lower Allen Township, was awarded the rank of Eagle Scout at a ceremony at Grace Evangelical Lutheran Church, Camp Hill, on March 22nd, 2020. Alex is a member of Boy Scout Troop 54 in Highland Park. There is an old farm pond at the Township's Public Works Facility that the Township would one day like to turn into a park. Alex cleared the area around the pond of trash, brush, deadfall and other debris, and recycled the plant material in the process. Alex was presented with a Resolution adopted by the Board of Commissioners honoring him for his achievement.



FREDRICKSEN LIBRARY • WEST SHORE RECREATION NEWS

Fredricksen Library News

Bike Raffle

Our Bike Raffle, in conjunction with Holmes Cycling and Fitness takes place this spring! Purchase your tickets beginning April 6 - \$5 per ticket or \$12 for three and you can win a bike of your choice from Holmes (up to \$450 value). Drawing will be held June 29.

Blueberries for Books!

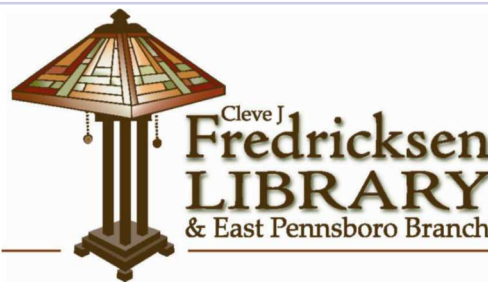
We will once again be selling 10 lb boxes of fresh blueberries for \$30. Visit the library or our website to place your order beginning April 27. Pickup on July 2.

Online Resources

Your library card gives you access to a world of opportunity including free tutoring resources for all ages from Tutor.com and streaming video services from Kanopy.com.

A variety of programs and activities for all ages will take place this spring and summer at Fredricksen! Visit our website at www.fredricksenlibrary.org for a complete list of events. Be sure to follow us on social media to stay up-to-date on our happenings. Look for us on Facebook, Instagram, Twitter and Pinterest.

Fredricksen Library 100 N. 19th Street Camp Hill, PA 17011 717-761-3900



**CAMP COUNSELORS,
LIFEGUARDS &
SWIM INSTRUCTORS**
Application Forms
available at
www.westshorerec.com

APPLY NOW

PO Box 413
Lewisberry PA 17339
717-920-9515 Fax: 717-920-9518

2020 Events—Tentative Listing Lower Allen Community Park

April: 7, 14, 21, 28 WSRC— Puppy training class (**registration required**)
Fernlawn Pavilion, 5:30pm—7:30pm
27 USA Softball Tournament - Fields— 1, Chianos, 3 8am — dusk

May: 5, 12, 19 WSRC- Puppy training class (**registration required**)
Fernlawn Pavilion, 5:30pm—7:30pm
16 USA Softball Tournament
Field 1, Chianos, Field 3 8am—dusk

June: 7 USA Softball Tournament - Fields — 1, Chianos, 3 (8am—dusk)

August: 6 Lower Allen Township's - Yappy hour event
Lower Allen Dog Park - 5:30—7pm

October: 10, 11 Dillsburg Soccer Tournament
Barn, Tot lot, Fernlawn pavilion
Upper, Keystone, Lower pavilions 8:00am—Dusk
Fields — Upper, Lower, Creekside 1,2,3,4

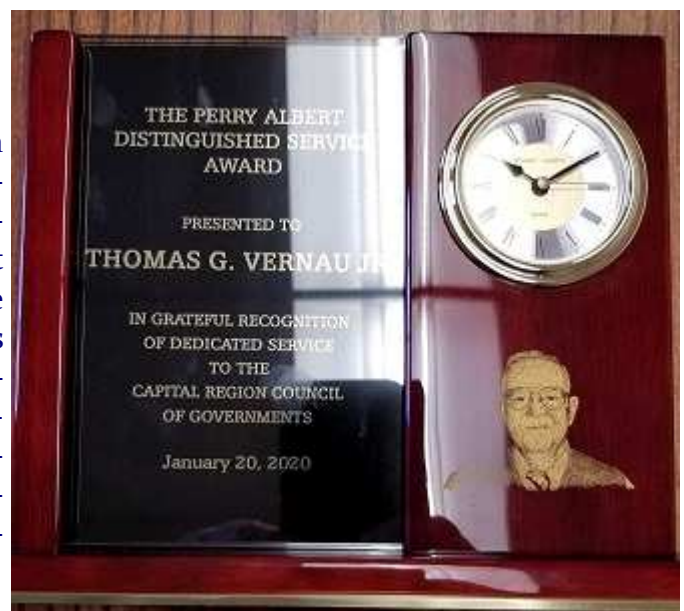
Authority Service Recognition

Twenty-Five Years of Service

Congratulations to Keith D. Ferree on completing twenty-five years of service with the Authority on February 6, 2020. Keith holds a Class A wastewater operator's license and Pennsylvania CDL Truck License. He has been involved with collection sewer maintenance, treatment plant operations, and is currently the collection system inspector and PA One Call responder. The Authority Board and Keith's co-workers appreciate his experience and extend congratulation on reaching this 25-year milestone.

Township Manager Receives the Perry Albert Award

Congratulations to our Township Manager, Tom Vernau, for receiving the Perry Albert Distinguished Service Award for service to the Capital Region Council of Governments. The late Perry Albert was a Fairview Township Supervisor and Executive Director of the Council of Governments who was dedicated to improving the effectiveness and efficiency of local governance by encouraging municipalities to work together. The award is given annually to a member who is determined by the Executive Committee to best exemplify Mr. Albert's vision.



AMBULANCE SUBSCRIPTIONS • NEW BUSINESS



Ambulance Subscription Renewals

The 2020 Ambulance Subscription Renewals were mailed out in December. Ambulance Subscriptions are good for the calendar year of 2020. The Board of Commissioners set the Subscription rates for 2020 at \$75 for a Single Subscription and \$95 for a Household Subscription. If you did not receive a subscription form, or if you have any questions please contact Bev Putric at 975-7575, ext. 1205.

Why have a subscription? The cost of a trip in an ambulance is very high and insurance generally does not pay the full bill. By becoming a subscriber, if you call 911, are transported to a hospital and the transport is deemed medically necessary, Lower Allen EMS will accept the insurance company payment as payment in full for your first trip. Subscriptions do **not** cover routine transportation, transportation for stretcher or wheelchair, or transportation that is not medically necessary. You are responsible for additional mileage costs if you are transported past the closest appropriate facility.

NEW BUSINESSES IN LOWER ALLEN:

- ⇒ **Compassionate Pet Grooming**
3300 Hartzdale Drive, Suite 106
- ⇒ **Hepaco Environmental & Emergency Services Co.**
4700 Westport Drive, Suite 400
- ⇒ **Earth Engineering**
5020 Ritter Road, Suite 110
- ⇒ **Natural Pathways**
1524 Cedar Cliff Drive
- ⇒ **Outback Restaurant**
1201 Lower Allen Drive



SALUTING AMERICA®

Honoring Service to America: Past, Present & Future

Lower Allen VFW Post 7530

www.VFWPost7530.com

**4545 Westport Drive
Mechanicsburg, PA 17055**





LOWER ALLEN TOWNSHIP

2233 GETTYSBURG ROAD • CAMP HILL, PENNSYLVANIA 17011



2020 Newsletter Subscription Form

Yes! I am enclosing \$5.00 with this completed form. Sign me up today for delivery of the Township News to my mail box, for a one time payment of only \$5.00 for the entire year of 2020.

Name: _____ **Phone#:** _____

Address: _____