



Winter 2022

TOWNSHIP NEWS

Lower Allen Township • 2233 Gettysburg Road • Camp Hill, PA 17011



Board of Commissioners

President Dean W. Villone,
Vice President H. Edward Black,
Carolyn Holtzman, Thomas Kutz &
Josh Nagy

Inside this issue:

<i>Directory of Services, Calendar at a Glance, Officials in Action</i>	<i>Pages 2-3</i>
<i>2022 Budget</i>	<i>Pages 4-5</i>
<i>Penn Waste News, MS4 Update, Employee Milestones, Promotions, Retirements</i>	<i>Pages 6-7</i>
<i>Wealth Through Real Estate, 2022 Penn Waste Calendar</i>	<i>Pages 8-9</i>
<i>Lisburn Fire Company, Commissioner Schin's Retirement</i>	<i>Pages 10-11</i>
<i>Boards & Commissions, Ambulance Subscriptions, LA Alerts, Newsletter Advertising</i>	<i>Pages 12-13</i>
<i>Winter Readiness, Winter Emergencies, Winter Deicing, Winter Parking</i>	<i>Pages 14-15</i>
<i>Christmas Tree Pickup, Bulk Items, Yard Waste, County Vector Control</i>	<i>Pages 16-17</i>
<i>Tax Office, Sewer Authority News, Fredricksen Library, West Shore Rec Commission</i>	<i>Pages 18-19</i>



Commissioner Richard F. Schin Retires

After a long public service career as a Township Commissioner, Richard F. "Rick" Schin decided not to seek re-election following his most recent term. Rick's last day in office was December 31st, 2021.

Rick served the residents of Lower Allen for 32 years, being first elected as Commissioner in 1986, and after a 4-year hiatus, again in 2010. He served as President of the Board from 1986 to 1991. Rick continues to serve on the Lower Allen Sewer Authority, an appointment he has held for many years,

During his many years of public service, Rick has served as the Township's representative to the Cumberland County Tax Bureau, the Capital Region Council of Governments, the Cumberland County Municipal Advisory Board, and as liaison to the Township Planning Commission. In addition to these formal appointments, Rick volunteered to serve on many committees and advisory panels throughout his tenure. Rick also held a position on the PA State Association of Township Commissioners (PSATC) Executive Committee for the Central Region from 2015 to 2019.

At the December 27th public meeting, Commissioner Schin was presented with a Resolution and plaque from the Commissioners, honoring and thanking him for his many years of service to the residents. Also presenting citations or letters of recognition were State Senator Mike Regan, State Representative Sheryl Delozier, and Capital Region COG Executive Director Gary Meyers. The meeting was recessed for a half hour for a cake reception.

We wish Rick and his wife LeeAnn nothing but the best in their next chapter.

DIRECTORY OF SERVICES

Lower Allen Township

2233 Gettysburg Road • Camp Hill, PA 17011

Phone: 717-975-7575 • Fax: 717-737-4182 • www.latwp.org

Monday-Friday: 8:00 am to 4:00 pm

Tax Office - Phone: 717-737-5671

KEY STAFF	EXT #
Thomas G Vernau, Jr., Manager	1001
Erin G. Trone, Assistant Manager and Director of Economic and Community Development	1002
Richard Grove, Finance Director	1202
Rebecca Davis, Public Works Director	1010
Bryan Harshbarger, Public Works Coordinator	2106
Dave Holl, Director of Public Safety	1601
Leon Crone, Police Captain	1515
Tony Deaven, EMS Captain	1810
Frank Wirth, Fire Captain	1311
David Murdoch, Fire Chief, Lower Allen Fire Co.	1302
Greg Black, Fire Chief - Lisburn	766-3994
Donna Paul, Human Resources	1402
John Eby, Building and Zoning Coordinator	1102

IMPORTANT NUMBERS

Emergency Police • Fire • EMS	9-1-1 (24-hours a day)
Non-Emergency & After Hours	717-238-9676
Poison Control Center	1-800-222-1222
PPL	1-800-342-5775
UGI	1-800-962-1212
PA American Water	1-800-565-7292
Suez Water Company	1-888-844-0352
Lower Allen Sewer Authority	717-774-0610
Penn Waste (Trash & Recycling)	1-866-575-8720
Trash Complaints - call the Township	717-975-7575, ext. 1003
Cleve J. Fredrickson Library	717-761-3900
New Cumberland Public Library	717-774-7820
Joseph T. Simpson Library	717-766-0171
West Shore Recreation Commission	717-920-9515
Representative Sheryl Delozier 2929 Gettysburg Rd., Suite 6, Camp Hill, PA 17011	717-761-4665
Senator Mike Regan 2151 Market Street Camp Hill, PA 17011	717-975-1985
U.S. Representative Scott Perry	717-635-9504
U.S. Senator Robert Casey, Jr.	717-231-7540
U.S. Senator Pat Toomey	717-782-3951

CALENDAR AT A GLANCE

*All meetings are held at the
Lower Allen Township Municipal Services Center
(unless otherwise noted)*

JANUARY

3	Board of Commissioners-Reorganization	6:00 pm
6	Sewer Authority	7:00 pm
6	Stormwater Authority	7:00 pm
17	Development Authority	6:00 pm
18	Planning Commission	7:00 pm
20	Zoning Hearing Board	6:30 pm
24	Board of Commissioners	6:00 pm
26	Recreation and Parks Board	7:00 pm

FEBRUARY

3	Sewer Authority	7:00 pm
3	Stormwater Authority	7:00 pm
13	Lisburn Fire Co. - BINGO	TBD
14	Board of Commissioners	6:00 pm
17	Zoning Hearing Board	6:30 pm
21	President's Day	Township Office Closed
22	Development Authority	6:00 pm
22	Planning Commission	7:00 pm
23	Recreation and Parks Board	7:00 pm
28	Board of Commissioners	6:00 pm

MARCH

3	Sewer Authority	7:00 pm
3	Stormwater Authority	7:00 pm
13	Lisburn Fire Co. - Turkey Dinner	TBD
14	Board of Commissioners	6:00 pm
15	Planning Commission	7:00 pm
17	Zoning Hearing Board	6:30 pm
21	Development Authority	6:00 pm
23	Recreation and Parks Board	7:00 pm
28	Board of Commissioners	6:00 pm

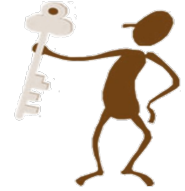
APRIL

7	Sewer Authority	7:00 pm
7	Stormwater Authority	7:00 pm
11	Board of Commissioners	6:00 pm
15	Good Friday	Township Offices Closed
18	Development Authority	6:00 pm
19	Planning Commission	7:00 pm
21	Zoning Hearing Board	6:30 pm
25	Board of Commissioners	6:00 pm
27	Recreation and Parks Board	7:00 pm



OFFICIALS IN ACTION

***The Board of Commissioners approved
the following:***



RESOLUTIONS

Resolution 2021-R-36 Hiring Daniel G. Bartosic as a Maintenance Specialist for the Public Works Department effective October 12, 2021. (Adopted 10-11-2021)

Resolution 2021-R-37 Appointing the Township's Stormwater Program Manager to the position of Public Works Director effective October 27th, 2021. (Adopted 11-8-2021.)

Resolution 2021-R-38 Promoting Glenn M. MaGatz to the position of Assistant Public Works Director for the Public Works Department, effective November 15, 2021. (Adopted 11-22-2021.)

Resolution 2021-R-39 Amending the Comprehensive Plan of 2018 to include the Gettysburg Road Corridor Master Plan. (Adopted 11-22-2021)

Resolution 2021-R-40 2022 Fee Schedule, Establishing Fees and Charges authorized by various Ordinances and Statutes for administration of Township Business in accordance with these Ordinance and Statutes. (Adopted 12-27-2021)

Resolution 2021-R-41 Recognizing Commissioner Richard F. Schin for 32 years of Service to the Residents of Lower Allen Township. (Adopted 12-27-2021)

Resolution 2021-R-42 Authorizing the Township to enter into the settlement agreement with McKesson Corporation, Cardinal Health, Inc, Amerisource Bergen Corporation, Johnson & Johnson, Janssen Pharmaceuticals, Inc., Orth-McNeil-Janssen Pharmaceuticals, Inc. and Janssen Pharmaceutica, Inc., agree to the terms of the Pennsylvania Opioid Misuse and Addiction Abatement Trust. (Adopted 12-27-2021)

Resolution 2021-R-43 Hiring Nathaniel C. Sterling as a full-time Administrative Assistant for the Public Works, Finance, and Human Resources Departments effective 1-3-2022. (Adopted 12-27-2021).

ORDINANCES

Ordinance 2021-05 Providing for the amendment of the Zoning Ordinance of Lower Allen Township, as codified in part II, article XIX of the Lower Allen Township code, and particularly providing for the amendment of 220-207 "Wireless Communications Facilities" of the Zoning Ordinance ; providing for purposed and findings of fact related to the adoption of the amendment; providing for definitions; establishing certain general and specific standards relating to the locations, placement, construction and maintenance of tower-based wireless communications facilities, non-tower wireless communications facilities; providing further for the regulation of such facilities within the public right-of-way and outside the public right-of-way; providing for the enforcement of said regulations; and providing for an effective date. (Enacted 12-27-2021)

Ordinance 2021-06 Appropriating specific sums estimated to be required for the specific purpose of the Municipal Government, hereinafter set forth, during the fiscal year 2022. (Enacted 12-13-2021).

Ordinance 2021-07 Amending the codified Ordinances of Lower Allen Township, 1997, as amended, Section 32-7, dealing with compensation of the Township Manager. (Enacted 12-13-2021).

NEW TOWNSHIP BUSINESSES:

Casa Market – 5204 Simpson Ferry Road

Cinnabon – 3981 Capital City Mall Drive

2022 BUDGET

This article summarizes the 2022 Budget enacted on December 13th 2021. As background, operating cost covers the day to day running of the Township, including labor, goods, and services. Capital outlays cover the acquisition of fixed assets such as land and building improvements, vehicles, etc. Debt service covers the repayment of bonds and other borrowings. The Township's main funds are the General Fund, which accounts for most day-to-day operations, Sanitation Fund that accounts for trash hauling and recycling, Fire and Fire Capital that pays for certain operations of the Township's two fire companies, and Highway Aid that funds certain road maintenance including road resurfacing projects.

As part of the budget process, the Board of Commissioners reviewed the Township's long-term financial plan. They knew that the service level increases stemming from the 2019 Public Safety Ad Hoc Committee recommendations would require a future tax increase, and that a new bond issue would likely be needed in 2025 to replace fire apparatus. That financial plan was put in place through a 2020 Resolution that caps annual spending growth, limits tax increases, sets aside reserves to carry the Township through an economic recession, and is expected to strengthen the Township's bond rating (thus trim significant cost from any future bond issue). The Resolution sunsets in 2025, but until then tax increases are limited to a cumulative total of 0.3 mills, or 7.5%. However, an optimistic turn of events reduces tax increase concerns for now.

Financially speaking, it was a bumpy ride since the end of 2019. With the negative financial impact of 2020 COVID restrictions, it was worried that reserves would be running low by 2022. It might be remarked that 2020 was saved by an accounting breakthrough, as the \$250,000 to \$350,000 deficit that staff was expecting turned into a surplus when a year-end, grant-related accrual was posted. Revenue improved in 2021, but it only bounced back to the level originally expected for 2020. On the outgoing side, inflation began to erode spending power. Fortunately, the American Rescue Plan Act infused unbudgeted money in 2021 and will do so again in 2022. If that infusion can be skillfully used (as of this writing, spending regulations are being interpreted), a tax increase may be avoided through at least 2023.

The largest single 2022 expenditure increases are not directly tied to operating or capital costs. About \$250,000 of debt service savings were taken in 2021 through bond refinancing, leaving debt service to resume as normal in 2022. Stormwater projects and other pass-through costs that are reimbursed by the Stormwater Authority increased by \$564,640. Looking at operating costs (without capital outlays) in the General Fund; the Public safety budget is \$8.1 million (an increase of 3.2%), Administration is \$2.0 million (+4.2%), Public Works is \$0.9 million (+2.8%) and Parks and Recreation is \$0.7 million (+4.1%). (The 2020 Resolution limits Public Safety to a 7.5% increase and the others in the General Fund to 5.0%.) In the Fire Fund, operating costs increased \$70,225. Service levels will see no major change, but one part-time employee will be moved to full-time, with the cost split between Administration and the Stormwater Authority. This will allow for increased efforts in delinquent account collections, a backup for the Township's receptionist, and other office duties.

The largest capital outlays are for replacement of the Township building's rooftop HVAC units (\$300,000), replacement police cars (\$161,730), Community Park barn roof replacement (\$74,500), a new play structure at the Cedar Spring Run Park (\$60,230), pedestrian crossing improvements at 18th St. and Hummel Ave. (\$60,000, offset by grant revenue), and a design study for the Beacon Hill Park (\$60,000). Other capital items of note are a flashing beacon at Wesley and Royal, a replacement play structure at Highland Estates Park, a pickleball court at the Community Park and road resurfacing focusing primarily on eastern Highland Park and Allendale subdivisions.

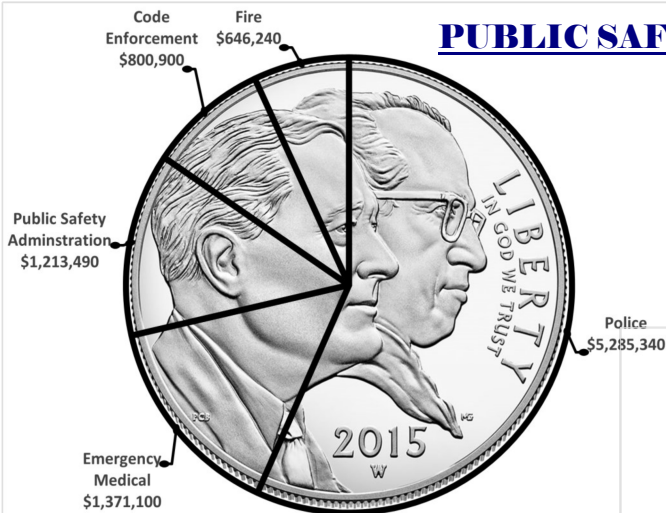
Revenue has changed little from the 2021 Budget except for that related to the pass throughs with the Stormwater Authority mentioned above. There is no new borrowing in the budget. Refuse fees increased, with the residential rate moving from \$72.96 to \$76.17 per quarter with a corresponding increase of Sanitation Fund expenditures to be paid to the Township's contracted waste hauler. Ambulance subscription rates were increased from \$75/\$95 to \$80/\$100, respectively, for single and family.

2022 BUDGET

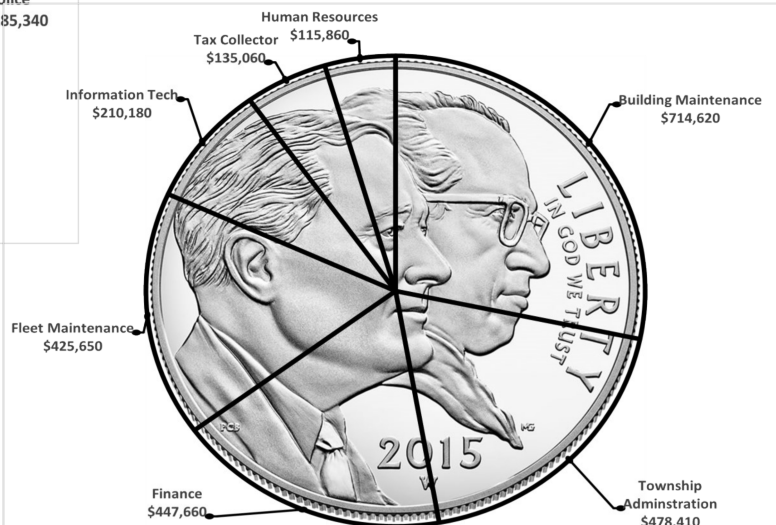
Looking forward, debt service on the aforementioned 2025 bond issue was factored into the 2020 tax increase. However, a 2021 study by an external consultant suggests that a fire station relocation may be prudent. While it is a goal for that relocation (should it occur) is to provide better coverage to the area south of the Turnpike and to improve the ISO rating and thereby favorably affect area fire insurance premiums, the additional debt service cost may need to be raised by the Township. As of this writing, the economists at Wells Fargo are predicting slower GDP growth with inflation peaking in 2022, and growth in interest rates at all points on the curve. This suggests that the naturally occurring revenue growth experienced before 2020 may not resume at that same pace, that spending power may continue to erode in the near-term, and that the bond rates in 2025 may exceed the amount being planned for and set aside. Provided that the American Rescue Plan Act money can be applied to existing service level delivery, the immediate future is bright. If the situation tightens, spending limits tighten, first for Public Safety and then for all functions, and up to 0.3 mill of real estate tax can be raised.



PUBLIC SAFETY



ADMINISTRATION



PENN WASTE NEWS • MS4 UPDATES

RECYCLING 101: BACK TO BASICS

Since the kids headed back into the classroom, we thought it'd be a good time to take our customers back to recycling school! Here's a refresher on the basics of recycling:



Step 1: Only recycle the items we accept at our recycling facility. This includes:

- Plastics with numbers 1,2 and 5 on the bottom
- Cardboard
- Newspaper
- Aluminum and metal food and beverage **cans**
- Food & beverage **cartons** (such as an orange juice carton)
- Glass food and beverage containers

Want to print this list? Go to <https://www.pennwaste.com/wp-content/uploads/2018-Penn-Waste-Recycling-Guidelines.pdf>

Step 2: Make sure your recyclables are empty, clean and dry. Dirty recyclables can contaminate other recyclables in the truck load.

Step 3: Place ONLY the above recyclable items in your recycling bin. Want to save space in your recycling container? Flatten your cardboard and condense your large plastics if possible.

Finally, one of the most frequently asked questions we get is whether lids should be taken off of containers. The answer is **yes**, but the reason **why** might surprise you. Lids are typically too small for our machinery to capture and end up getting mixed in with other contaminants that cannot be recycled.

Recycling really is **that** easy! Class dismissed.

Municipal Separate Storm Sewer System (MS4) Update:

Where Does Stormwater go in the Winter?

As the last leaves fall and days grow shorter, we begin to prepare for the winter weather. You may not think much about stormwater runoff during the winter months, but snow is precipitation, and as it melts, it becomes stormwater. Plowed snow can contain pollutants such as salt, sand, silt, oil, grease, fertilizers, heavy metals, and trash. When snow accumulates and subsequently melts, these pollutants are released in the form of stormwater runoff. Stormwater runoff goes directly to creeks and streams and is left untreated. Here are a few tips to be environmentally responsible when conducting snow removal this winter.

- * **Snow & Ice Removal:** Use mechanical means before applying salt or deicers, whenever possible. Start shoveling early! The more snow you remove, the less salt and sand you'll need.
- * **Salt/Deicer Application:** Follow manufacturer's instructions and use only enough to break the ice/pavement bond. Do not apply on vegetation or near waterways. Use less harmful deicers such as Calcium Magnesium Acetate or Sodium/Potassium Acetate which can be found at many local hardware and grocery stores. When temperatures hit 15° F or below, salt is not effective. Consider using traction materials that contain an acetate, potassium chloride, magnesium chloride, or cracked cornmeal instead of sand or kitty litter.
- * **Snow storage:** Pile snow in locations where infiltration into the ground is possible. Try to look for areas where water does not pond. Be mindful of storm drains and do not pile snow on them or around them if possible.

EMPLOYEE MILESTONE • PROMOTIONS • RETIREMENTS

<u>New Hires</u>	<u>Position</u>	<u>Department</u>
Jacob Meyers	Emergency Medical Technician	Public Safety
Heather Douden	Administrative Assistant & Event Coordinator	Public Works Department
Bradley McCullough	Township Engineer & Public Works Director	Community and Economic Development
Michelle Kilgore	Recording Secretary	Administration
Russell Olsen	Maintenance Specialist	Public Works
Justin Lenker	Public Safety Officer	Public Safety
Nicholas Hughes	Police Officer Cadet	Police
Ethan Kell	Police Officer	Police
Tyler Lewis	Police Officer Cadet	Police
Craig Doll	Construction Code Official	Community and Economic Development
Daniel Bartosic	Maintenance Specialist	Public Works
Renee Greenawalt	Recording Secretary	Administration

<u>Moves</u>	<u>Positions</u>	<u>Department</u>
Bryce Thompson	From Maintenance Specialist to Stormwater Inspector	Public Works

<u>Promotions</u>	<u>Position</u>	<u>Department</u>
Douglas Foltz	Lieutenant	Police
Donald J. Sentman	Lieutenant	Police
Michael Scarlato	Corporal	Police
Rebecca L Davis	Public Works Director	Public Works
Glenn MaGatz	Assistant Public Works Director	Public Works

<u>Retirement</u>	<u>Position</u>	<u>Department</u>
Daniel J. Flint	Township Engineer & Public Works Director	Public Works
Wendy Hayden	Administrative Assistant	Public Works
Gregory Thomas	Lieutenant	Police
Thomas Gelnett	Police Officer	Police
John J. Brossman	Sewer Authority Manager	Sewer Authority

<u>Employee</u>	<u>Performance Award for:</u>	<u>Department</u>
Scot Emerson	Saving the Township money by working on the Public Works Expansion and Lower Allen Commons Projects	Facility Maintenance
Aaron Duncan	Saving the Township money by replacing a blown engine in a police car and fabricating a rear step for the prisoner transport van.	Fleet Maintenance
Richard Grove	For his work in preparing a report in defense of the Triple Crown lawsuit.	Finance

WEALTH THROUGH REAL ESTATE

The last installment examined property value from the perspective of a metropolitan area. This article will focus on neighborhoods and homes based upon knowledge learned from the U.S Census, American Housing Survey.

Urban development follows a universal pattern where an urban core develops around economic activity. Density is highest near the employment centers, and lowest near the fringe where land is cheaper. As the local economy expands, property nearest to employment becomes even more valuable, and greater density there becomes the trend. New residential construction is a factor of consumer preference, their willingness and ability to pay for it, technology, and materials and labor skills available at the time.

Intense development did not take place in the Township prior to the Second World War when the metro border was at the boroughs to the north and east. When they filled, the Highland Park area sprang up into planned developments under (then) new zoning regulations. Allendale exemplifies the change in consumer preference at the fringe by the late 1950s. Today, the urban fringe has moved beyond Lower Allen. More intense Township development is now financially advantageous as seen in today's new construction such as in Arcona.

Land in the counties to the Township's north and south is different geologically, giving it a lower agricultural rent and a higher commuter cost. It is unlikely to serve as a central employment core. The newest cores will likely be to the west, where locations like Silver Spring are developing rapidly and intensely. Lower Allen remains in a viable location, so property values here have a very good outlook, especially if blight is kept at bay.

Once a neighborhood is constructed, a good deal of its continued value is dependent upon employment outlook and actions of the municipality and school district. The American Housing Survey gives the main reasons for neighborhood selection is (in order):

1. Convenient to job
2. Convenient to friends or relatives
3. Other public services (e.g., parks and open space, good transportation system)
4. Safety of neighborhood
5. Convenient to amenities (e.g., groceries, healthcare)
6. Looks/design of neighborhood
7. Good schools

Neighborhoods follow a pattern. No blight is seen in brand new neighborhoods. Time can decrease the value of land improvements (structural rent) and at some point, property maintenance may not be kept up for a few units. This tends to decrease land value for the surrounding properties, and blight can set in. Preventing blight takes an investment by the municipality and enforcement of sometimes unpopular codes. Although, a long-term perspective can keep blight at bay, once it starts in earnest, blight is virtually impossible to stop.

Such an investment is tempting to forego since the benefit from taxes raised today may not be reaped for many years. The current philosophy of the Lower Allen Commissioners majority is still one that measures cost to benefit over the long run.

Here is your final exam: 1. Some municipalities levy two tax millage rates; one on land value and another on land improvement value. How might a difference in these millage rates modify land use behavior? 2. Lower Allen allocates an above average share of resources to police and property code enforcement. Would an absentee landlord feel the same or differently than a resident about the needed incremental taxes? 4. If 10% of State workers began working from home due to COVID, some extrinsic economic activity (food service, lunchtime shopping, etc.) would move away from Harrisburg City. What Township-provided services would best draw this economic shift to Township businesses, and how would a stronger business community impact Township residential property value? 3. Assume that the State is considering implementing a toll to cross the John Harris Memorial (South) bridge. Many more Cumberland County residents work in Dauphin County than vice versa. How might this toll effect property value in Lower Allen?

2021 PENN WASTE CALENDAR

2022 Lower Allen Township Trash & Recycling Collection Calendar

January							February							March							April						
S	M	T	W	T	F	S	S	M	T	W	T	F	S	S	M	T	W	T	F	S	S	M	T	W	T	F	S
						1			1	2	3	4	5			1	2	3	4	5						1	2
2	3	4	5	6	7	8	6	7	8	9	10	11	12	6	7	8	9	10	11	12	3	4	5	6	7	8	9
9	10	11	12	13	14	15	13	14	15	16	17	18	19	13	14	15	16	17	18	19	10	11	12	13	14	15	16
16	17	18	19	20	21	22	20	21	22	23	24	25	26	20	21	22	23	24	25	26	17	18	19	20	21	22	23
23	24	25	26	27	28	29	27	28						27	28	29	30	31			24	25	26	27	28	29	30
30	31																										

May							June							July							August						
S	M	T	W	T	F	S	S	M	T	W	T	F	S	S	M	T	W	T	F	S	S	M	T	W	T	F	S
1	2	3	4	5	6	7				1	2	3	4						1	2		1	2	3	4	5	6
8	9	10	11	12	13	14	5	6	7	8	9	10	11	3	4	5	6	7	8	9	7	8	9	10	11	12	13
15	16	17	18	19	20	21	12	13	14	15	16	17	18	10	11	12	13	14	15	16	14	15	16	17	18	19	20
22	23	24	25	26	27	28	19	20	21	22	23	24	25	17	18	19	20	21	22	23	21	22	23	24	25	26	27
29	30	31					26	27	28	29	30			24	25	26	27	28	29	30	28	29	30	31			
														31													

September							October							November							December						
S	M	T	W	T	F	S	S	M	T	W	T	F	S	S	M	T	W	T	F	S	S	M	T	W	T	F	S
				1	2	3							1			1	2	3	4	5					1	2	3
4	5	6	7	8	9	10	2	3	4	5	6	7	8	6	7	8	9	10	11	12	4	5	6	7	8	9	10
11	12	13	14	15	16	17	9	10	11	12	13	14	15	13	14	15	16	17	18	19	11	12	13	14	15	16	17
18	19	20	21	22	23	24	16	17	18	19	20	21	22	20	21	22	23	24	25	26	18	19	20	21	22	23	24
25	26	27	28	29	30		23	24	25	26	27	28	29	27	28	29	30				25	26	27	28	29	30	31
							30	31																			

 = Yard Waste Collection

Observed holidays are noted in **RED**. Collection days that fall on or after the holiday will be delayed one day. EXCEPTION: If holiday falls on a Saturday or Sunday, there is no change in service prior to or after the holiday.

BASIC RESIDENTIAL GUIDELINES



- Trash, Recycling, and one bulk item must be curb side by 7:00 AM on your scheduled collection day.
- Yard Waste must not exceed 6 feet in length, 4 inches in diameter and must be bundled or placed in a Township-provided container.
- Yard Waste will be collected on the same day as trash and recycling beginning in April and continuing through November. (See Calendar Above)
- Call Penn Waste to schedule collection of appliances containing freon (air conditioners, refrigerators, freezers, etc.)
- No construction debris will be collected curb side.
- To stay up to date on collection updates, sign up for E-News Updates at www.pennwaste.com.



Creating a green community together.



www.pennwaste.com



Penn Waste Inc. • PO Box 3066 • York, PA 17402

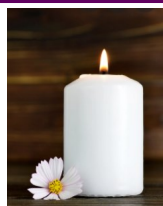
Lisburn Community Fire Company



THANK YOU—We Serve an Awesome Community

As we look to 2022, we can't help but reflect on 2021. Through all the challenges we faced, we continued to serve our community and answered the calls for help. Our main concern was the community we serve.

In 2021, we continued to feel the affects of COVID with canceling our bingos and having to go dinners. You waited in line and we sold out at most of our dinners. Thank you to all who came out to support us this year with a dinner or during our festival. Thank you to everyone who was able to make a donation this year. We look forward to serving you in 2022.



REMEMBERING THOSE WE LOST

In 2021, we lost two active members of the Fire Company; Dennis Smith in the spring and Mary Patrick in the fall. Dennis Smith helped with Fire Police and helped direct traffic during our events. Mary Patrick volunteered in the fry room during Festival with her son Firefighter Michael. They were dedicated volunteers who enjoyed serving. We will miss their laughter, spirit and friendship. Our condolences go to all the families of our community who lost someone in 2021.



WE NEED YOU!

As the new year starts, we set new goals/resolutions. Why not make one of those goals to get more involved and volunteer. We have an AWESOME group of volunteers and firefighters. But we could use more!! We have several fundraisers a year to help fund the operating expenses and capital purchases. **Please consider becoming a member and volunteering this year!** Applications are on the website. Our meetings are the first Thursday of each month at 7pm in the Fire hall—come to one and check us out.

The Lower Allen Township Board of Commissioners adopted Ordinance 2017-08 and Resolution 2017 R-38 establishing a Volunteer Service Credit Program. This program may allow your volunteer hours at Lisburn to turn into a credit on your local earned income tax or property taxes as a resident of Lower Allen Township (*requirements outlined in the resolution*).



FEBRUARY 13th-BINGO
MARCH 13th-Turkey Dinner
AUGUST 10-13th-FESTIVAL

Check out our website and Facebook pages for updated information on our events.



1800 Main Street Lisburn, Mechanicsburg, PA 17055
(717) 766-3994 LisburnFire24@gmail.com

COMMISSIONER SCHIN'S RETIREMENT GATHERING



President Dean Villone giving Commissioner Richard Schin a Resolution for 32 years of Service.

Commissioner Richard Schin with a plaque from the Township recognizing and thanking him for his 32 years of dedicated service to the Residents of Lower Allen Township.



State Representative Sheryl Delozier giving Commissioner Richard Schin a Citation from the PA House of Representatives.



Commissioners Thomas Kutz giving Commissioner Richard Schin a Senate Citation from the PA Senate and PA Senator Mike Regan.



From L to R:
Vice President H. Edward Black, Commissioner Richard Schin, President Dean Villone and Commissioner Thomas



BOARD & COMMISSIONS • AMBULANCE SUBSCRIPTIONS

Board and Commission Volunteers Needed

Vacancies occur from time to time on the various boards and commissions that serve the residents of our Township. These boards and commissions include:

Planning Commission
Sewer Authority
Recreation & Parks Board
Stormwater Authority

Zoning Hearing Board
Development Authority
Civil Service Commission



If you have a couple of hours a month to spare to engage with your fellow residents for the betterment of the community, then please send your resume and cover letter, indicating your areas of interest, to Township Secretary Helen Grundon. If you need information about what these boards & commissions do, please contact Township Manager Thomas Vernau at 975-7575 x 1001.

Here are some residents that have recently been appointed to Boards and Commissions:

<u>Volunteer</u>	<u>Board or Commission Appointment</u>
Allison Hanna	Appointed to the Recreation and Parks Board
Jeffrey Logan	Appointed to the Planning Commission
Mark O'Shea	Appointed to the Development Authority
Jennifer Caron	Appointed to the Zoning Hearing Board
Christopher Pushart	Appointed to the Civil Service Commission
Andrew Ritter	Appointed Vacancy Board Chairman
Beth Ann McCoy	Appointed Alternate Representative to the West Shore Recreation Commission



Ambulance Subscription Renewals

The 2022 Ambulance Subscription Renewals were mailed in December. Ambulance Subscriptions are good for the calendar year of 2022. The Board of Commissioners set the Subscription rates for 2022 at \$75 for a Single Subscription and \$95 for a Household Subscription. If you did not receive a subscription form, or if you have any questions please contact Bev Putric at 975-7575, ext. 1205.

Why have a subscription? The cost of a trip in an ambulance is very high and insurance generally does not pay the full bill. By becoming a subscriber, if you call 911, are transported to a hospital and the transport is deemed medically necessary, Lower Allen EMS will accept the insurance company payment as payment in full for your first trip. Subscriptions do **not** cover routine transportation, transportation for stretcher or wheelchair, or transportation that is not medically necessary. You are responsible for additional mileage costs if you are transported past the closest appropriate facility.

LA ALERTS • NEWSLETTER ADVERTISING



Receive Lower Allen Community Notifications

Subscribing is easy! Simply go the Township web page at www.latwp.org and click on **LA Alerts** under the Police & Public Safety News link. Here you will be able to create an account and list the phone numbers and email addresses you wish to be included as contacts. **Please include your street address during the registration process.** You can also then choose the level of contact and join contact groups. If you have any difficulty, you can also subscribe by calling us at 717-975-7575 Ext. 1602 and we will assist you in registering.

If you do not have access to a computer, please complete the form below and mail to Lower Allen Township, 2233 Gettysburg Road, Camp Hill, PA 17011, Attn: LA ALERTS (or use the drop box near the flag pole in our parking lot).



Please PRINT

I am a Lower Allen Township: _____ Resident _____ Business

NAME AND ADDRESS

Resident or Business Name: _____

Street Address: _____

Apartment or Suite #: _____ City: _____ Zip: _____

PHONE AND EMAIL

Phone (HOME): () ____ - ____

Phone (CELL): () ____ - ____ Circle One (TEXT or VOICE) EMAIL: _____

Phone (CELL): () ____ - ____ Circle One (TEXT or VOICE) EMAIL: _____

Phone (CELL): () ____ - ____ Circle One (TEXT or VOICE)

GROUP SUBSCRIPTIONS

I would like to subscribe to the following groups: _____ Emergency Alerts _____ Flood Plain Alerts _____ TMI Alerts

_____ Leaf/Trash Pick-up _____ Weather Alerts _____ Township Newsletters/Events _____ LA Business Owner/Operator

ATTENTION: Businesses and Organizations, let us help you get your information in front of many Township News readers.

Price	Ad Size	# of Issues
\$250.00	(3 1/2 x 2)	4
\$75.00	(3 1/2 x 2)	1
\$600.00	(6 1/2 x 4)	4
\$175.00	(6 1/2 x 4)	1



To arrange for your ad to be published in the next quarterly issue, available in October, call 975-7575, ext. 1003 or email hgrundon@latwp.org.

WINTER READINESS • WEATHER EMERGENCIES

A smart way to shovel your drive

How to reduce the possibility of getting a huge pile of snow in your driveway opening when snowplows clear your street:



Tips for Weathering the Winter

- *Consider using non-toxic de-icing substances such as clean clay cat litter, sand, or fireplace/stove ash to prevent hazardous waste from chemicals. Chemical deicers can be hazardous to your pets, your trees and shrubs, and the environment. Antifreeze that leaks from car engines and chemical snow melters on driveways, roads, and runways can pollute surface waters and groundwater through the soil.
- *Winterize your vehicle by checking your air filter and fluid levels, checking tires for tread wear and proper inflation, and checking the condition of your windshield wipers. Ensuring your vehicle is ready for weather changes will reduce damage, which prevents waste from broken parts, and will keep you safe on the road.
- *If you have a wood-burning fireplace, save your ashes in a tin instead of throwing them away. Cold wood ashes can be mixed in your compost heap to create a valuable soil amendment that provides nutrients to your garden.
- *Close the recycling loop. Many articles of clothing, such as jackets, scarves, gloves, and boots, are now made from recycled materials. Most fleece products are made from recycled plastic soda bottles, and certain clothing and shoe manufacturers use recycled cotton scraps and rubber tires to make their products.
- *Winter storms often cause power outages. Prevent waste by keeping rechargeable batteries rather than disposable ones stored throughout your house with your flashlights. If you do use disposable batteries, prevent hazardous waste by buying batteries with low mercury content.
- *To make sure your heating system (boiler, furnace or heat pump) is operating at its most efficient level, it is a good idea to have a contractor perform a routine check-up and any necessary maintenance on the equipment before freezing weather drives up your energy bill.

WEATHER EMERGENCIES

Weather emergencies may be declared whenever there is a forecast or accumulation of 3 or more inches of snow or when conditions are dangerous. A Snow Emergency will be declared and announced in the media giving a time (not less than 6 hours) by which **ALL VEHICLES** must be moved off all the streets.

The Public Works Department's initial priority is keeping major arteries and feeder roads open. As the emergency subsides and crews become available, the plows will clear curb to curb and move into residential areas.

Vehicles left on the street during a weather emergency are subject to being ticketed and also towed and stored at the owner's expense. Please adhere to the above regulations so emergency personnel can focus on recovery and returning life to normal in the Township. Please contact the Police Department at 975-7575 if you have any questions or concerns.



WINTER DEICING • WINTER PARKING

Winter Deicing

Winter deicing, or **de-icing**, is a common practice to manage ice and snow in cold climates by businesses and homeowners alike. Winter weather often leaves us dealing with snow and ice on our sidewalks and driveways. Currently the most common substances used for this are salts. However, the salts can be harmful for the environment; as they kill plants, ruin soils and are toxic to many species within stream [ecosystems](#). Shoveling is the best form of snow and ice removal. The old standard of using sand for traction is good but must be used sparingly. The sand can clog storm drains, destroy [habitat](#) in streams through the increase in sedimentation in the waterways. Homeowners do have some choices when it comes to the kinds of deicing [chemicals](#) but the important thing to remember is to choose carefully and use sparingly.

Removing Snow & Ice Responsibly

The increased use of salts for deicing over the last 50 years has this country currently using over ten millions tons on the roadways annually. There are alternatives to using salts even for the homeowner. Deicers are designed to loosen the ice so that it is easier to shovel. All substance options should be used sparingly to minimize the damage to waterways and the environment.

- ***Shoveling**– Very effective but can be back breaking and is the least damaging to the overall environment.
- ***Snow blower**– Easier on the back. Best if used before any deicers are used so as not to throw the [chemical](#) onto plants.
- ***Sand**– best for traction. Use sand *sparingly* as it can clog storm drains and choke waterways. Be sure to sweep up excess to minimize the amount of sand that gets into storm drains and waterways.
- ***Bird seed**– another traction method and it is biodegradable, or – even better, birds will enjoy eating it in the winter months!
- ***Safe Paw™**– Is not a salt but an amide/glycol mixture that is safe for the environment and is biodegradable.
- ***Calcium chloride**– works at very low temperatures, and you can use less. It is also easier on vegetation than regular Rock salt (sodium chloride). This is still a salt and can be toxic to waterways. Use Properly and SPARINGLY!
- ***Liquid deicer [chemicals](#)**– For areas that experience large occurrences of snow and ice, deicing [chemicals](#) are necessary. The liquid deicers works best when used BEFORE a storm hits, this is called Anti-icing. A thin layer of liquid deicer applied to sidewalks and driveways prevents the formation of ice. Timing is key to minimize the wash-off potential from rain. This method requires less product than granular forms of deicers which can be more economical.

Winter Parking



The Police Department would like to remind residents about parking regulations during the upcoming winter season. Beginning December 1 through March 31 along posted streets residents may only park their vehicles on one side of the street as indicated by the street signs. The side that is permitted for parking alternates on a monthly basis. Please be sure that you are parking on the correct side of the street. Your compliance with this Ordinance allows the Public Works Department to get into the developments to quickly clear a travel lane without weaving between vehicles parked on opposite sides of the street. The following streets have odd/even signs posted:

19th Street	Elmhurst Road	Letchworth Road	Shoreham Road
20th Street	Highland Drive	Letchworth Drive	Strafford Road
Apple Drive	Kelton Road	Manchester Road	Village Road
Chatham Road	Kent Road	Norman Road	Warwick Road
Chatham Drive	Kent Drive	Oxford Drive	Wyndham Road
Cherokee Avenue	Kingsley Road		

Vehicles that are in violation of the **odd/even** parking requirements are subjected to being ticketed.

CHRISTMAS TREE COLLECTION • BULK ITEMS • YARD WASTE

Christmas tree collection 2022

The Township will be picking up Christmas trees from January 3rd through the 14th on your regular trash collection day. Please make sure you remove all ornaments, garland and lights. No bagged trees will be picked up.



BULK ITEM DISPOSAL

One bulk item per week can be picked up curbside by your trash hauler. For residents' convenience, four loads per household per calendar year can be brought to the Public Works facility. The business hours for dropping off items at Public Works is Monday – Friday between the hours of 7:00am – 3:00pm. For residents' convenience, the facility is open the second Saturday of the month 8:00am – 1:00pm, from April through November.

Bulk items - Household appliances, furniture, carpet and wooden items - (outdoor furniture, swings and landscaping timbers). Lawn mowers, snow blowers and trimmers (with all fluids removed) will also be accepted. **A \$25.00 fee will be assessed for households exceeding their 4 load limit.**

Shingles, concrete, dirt, paint, tires, oil, fuel, glass, pressurized tanks, TV's and Computer Equipment WILL NOT be accepted.

Please refer to the Cumberland County website, www.ccpa.net, for recycling guidelines and disposal locations for electronics and hazardous materials.

Wood chips

Wood chips are available to Township residents year round, for self-loaded pick up at the Public Works facility. All wood chip deliveries will be made on Thursday and Friday mornings, starting in April, 2022.

CURBSIDE YARD WASTE PICK UP

The Townships' yard waste recycling program will start in April 2022 and will be collected by your trash hauler on your regular trash day. Yard waste collection will begin in April and run through the last week in November. Residents may bring their yard waste directly to the Public Works facility, located at 1400 St. Johns Road, Monday through Friday, between the hours of 7:00am – 3:00pm. The second Saturday drop off will start in April and end in November. **Lower Allen households are limited to four loads of brush (yard debris) brought to Public Works, per calendar year. A \$25.00 fee will be assessed for households exceeding their 4 load limit.**

Landscape Contractors working at properties in the Township may haul yard waste generated at those properties to the Public Works facility when accompanied by the resident, or with prior approval. A contractor's yard waste permit is required to be purchased by contractors using the facility.



Yard waste consists of garden debris, leaves, sticks, branches and stumps (no larger than 14 inches in diameter). **Grass clippings and sod are NOT considered yard waste and should be bagged and put out with regular garbage, or composted. Branches must be bundled with twine or string, and not exceed 6 feet in length or 4 inches in diameter. Maximum weight is 45lbs.**

Yellow yard waste bins should be used for smaller manageable amounts of debris. No trash bags or garbage should be mixed in with the yard waste. Yellow yard waste bins can be picked up at the Municipal Services Center during regular business hours. Unlimited amounts of yard debris may be placed curbside, using the previously stated guidelines.

Yellow Yard Waste Recycling Containers are available at the Municipal Services Center, 2233 Gettysburg Road, Camp Hill, PA 17011 Between the hours of 8 am and 4 pm, Monday-Friday.

Limit one per residence. Additional or replacement containers available for a \$13 fee.

COUNTY VECTOR CONTROL



COMMISSIONERS OF CUMBERLAND COUNTY

Vector Control Weights & Measures
310 Allen Road Suite 701
Carlisle, Pennsylvania 17013
717-240-6349
717-240-7754 fax
www.ccpa.net/vector

Gary Eichelberger
Chairman

Jean Foschi
Vice-Chairman

Vincent T. DiFilippo
Secretary

The Spotted Lanternfly

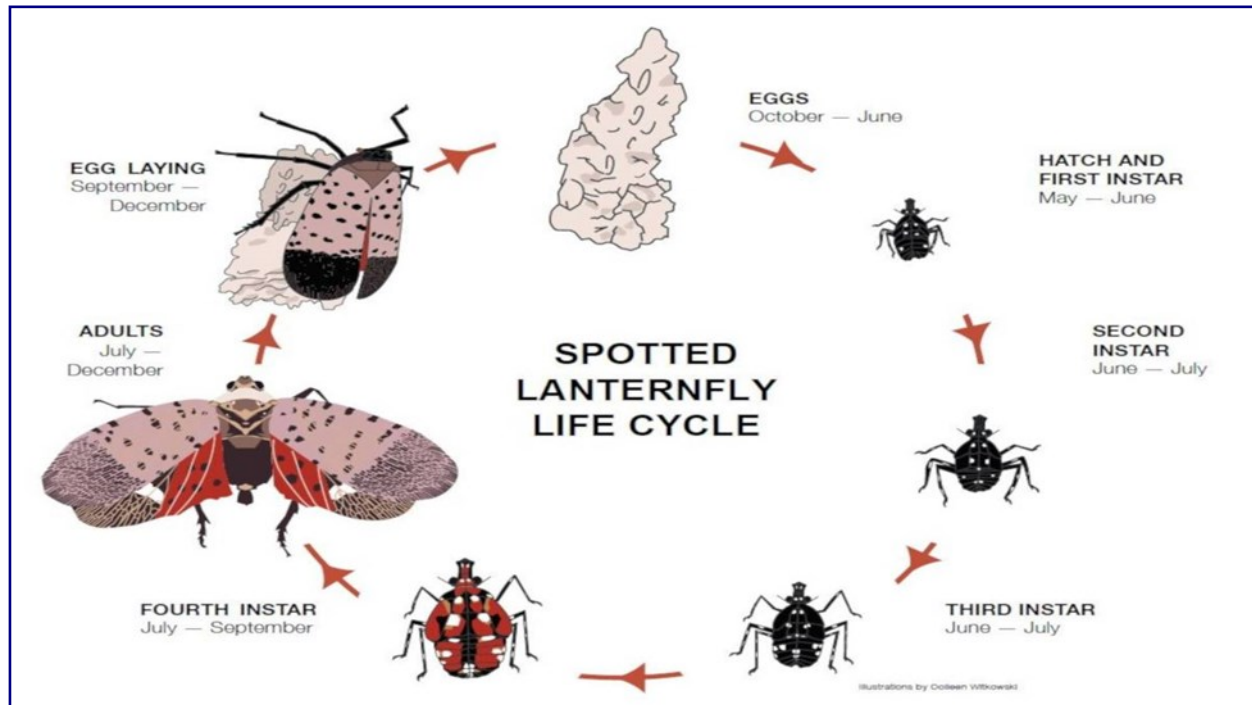
Here at the county, we have noticed an influx of calls regarding sightings of the Spotted Lanternfly, and have been noticing them ourselves as we move throughout the county. We wanted to provide the community with the proper outlet for reporting sightings.

To report a Spotted Lanternfly, you will want to contact the Pennsylvania Department of Agriculture or the Penn State Extension Office.

If you prefer to report online, the address is: <https://extension.psu.edu/have-you-seen-a-spotted-lanternfly>

Here you will identify what you are seeing, and you will be taken to the reporting tool.

For those of you who would rather report over the phone you can call
1-888-4-BAD-FLY (1-888-422-3359), Monday – Friday, 8 a.m. – 5 p.m.



Marcus Snyder—Public Health Technician
Vector Control Weights & Measures, Cumberland County Pennsylvania
310 Allen Road Suite 701, Carlisle, PA 17013
717-240-7808 717-448-5405
mtsnyder@ccpa.net

TAX OFFICE · SEWER AUTHORITY NEWS

QUARTERLY TAX TIPS

"Professional, Yet Personal...That's My Bottom Line"

Winter greetings from Bonnie Miller, Tax Collector. I hope this finds you safe and healthy and full of the Christmas spirit. Sorry to have to bring this up, but if you are delinquent on your 2021 Lower Allen Township/Cumberland County and/or West Shore School District real estate taxes you will be contacted by Cumberland County Tax Claim mid-February. They automatically add \$15 to the tax bill and add interest February 1st along with affecting your credit and a lien goes on your property with your mortgage company. If you receive a delinquency notice and you believe it was an error, please research with either a stamped paid receipt or cancelled check and provide to me and I will research it in the tax office with my records.

You should have received a \$6,840 Homestead Exclusion on your July 1st, 2021 West Shore School District Real Estate tax bill, if you did not, perhaps you are a new homeowner or didn't apply for it, the next window to apply for the Homestead Exclusion is December 15, 2021 through March 1, 2022. You can obtain that form on Cumberland County's website, ccpa.net. If you take the \$6,840 Homestead Exclusion amount and multiply it by 12.7512 mils it equals \$87.22. Your assessment on your house will go back to the original assessment before the Homestead Exclusion since that only applies to the West Shore School District real estate tax bill.

2022 Lower Allen Township and Cumberland County Real Estate taxes dated March 1, 2022 will be mailed on March 1st.

If you need paid receipts (\$1 per copy) for your rebate and/or tax return please send a self-addressed stamped envelope with a note requesting it and a check for the number of copies and I will return the receipts to you via mail or email. You can email me at bmiller@latwp.org or millekbkle@gmail.com.

The Tax Office will remain closed during COVID-19. If you need to get ahold of me, I can be reached at my home (717) 763-7960 or by email bmiller@latwp.org or millekbkle@gmail.com

MARCH 13th Daylight Saving Time Begins

When you change your clock remember to change the batteries in your smoke alarms and carbon monoxide detectors. Detectors save lives!!



SEWER RATE INCREASE NOTICE

Sewer Rate Increase

Beginning January 1, 2022, the new sewer billing rates will be as follows:

Residential	\$79.00 per quarter
Non-residential	\$79.00 per quarter base fee
	Plus \$4.60 per 1,000 gallons per quarter

The fee increases are required for Unit Debt Cost Recovery compliance, and are less than the price index cost increase over the two-year period. This increase is necessary to meet operational expenses. The Authority continues to meet its customer service needs and environment compliance mandates cost effectively. Lower Allen Township sewer rates continue to be one of the lowest quarterly rates in the area.

WEST SHORE RECREATION NEWS • FREDRICKSEN LIBRARY

Stay Active. Stay Healthy

Whether you are looking to improve your health, learn a new skill or just have some fun, we have lots of activities to choose from this season.

DON'T WAIT! Try an Activity Today,
Active Wellness
Aquatics
Sports
Enrichment
Bus Trips

We are your Recreation Department.

**SOMETHING
FOR EVERYONE**



GET INSPIRED. GET TOGETHER.
GET RESULTS.

Kids can learn & grow while having fun taking part in activities designed especially for them.



just for kids.

Visit www.westshorerec.org

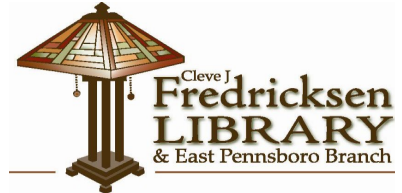
Tel: 717-920-9515

PO Box 413

Lewisberry PA 17339

*Accepting applications for summer positions

Fredricksen Library



- 📖 Doing some winter cleaning? The Friends of Fredricksen hold Donation Station the first Saturday of the month from 1 p – 3 pm to accept donations of books and media for their Book & Media Sales. To drop off donations, please park in the lower parking lot off Walnut Street close or near the sidewalk. Donations of one box or less can be dropped off at the Reference Desk whenever the Library is open. Thank you for your donations!
- 📖 Don't forget our e-resources are always available FREE to library card holders. With either the Overdrive or Libby app, you can get all your favorite books electronically without leaving home.
- 📖 We have a variety of programs and activities for all ages taking place this winter both in person and virtually at the library! Visit our website at www.fredricksenlibrary.org for a complete list of events. Be sure to follow us on social media to stay up-to-date on our happenings. Look for us on Facebook, Instagram and Twitter. Thank you for supporting Fredricksen Library!

Fredricksen Library
100 N. 19th Street, Camp Hill, PA 17011
717-761-3900



SNOW AND ICE REMOVAL AFTER STORMS

Please remember that there is an Ordinance that is enforced for snow removal in Lower Allen Township:

- Sidewalks must be clear of ice and/or snow within 24 hours after the precipitation stops.
- Snow shall not be thrown into the roadways when clearing sidewalks and driveways,
- Snow may not be pushed into the yards of other residents and businesses when clearing driveways , sidewalks and parking lots.

2022 Newsletter Subscription Form

Yes! I am enclosing \$5.00 with this completed form. Sign me up today for delivery of the Township News to my mail box, for a one time payment of only \$5.00 for the entire year of 2022.

Name: _____ **Phone#:** _____

Address: _____