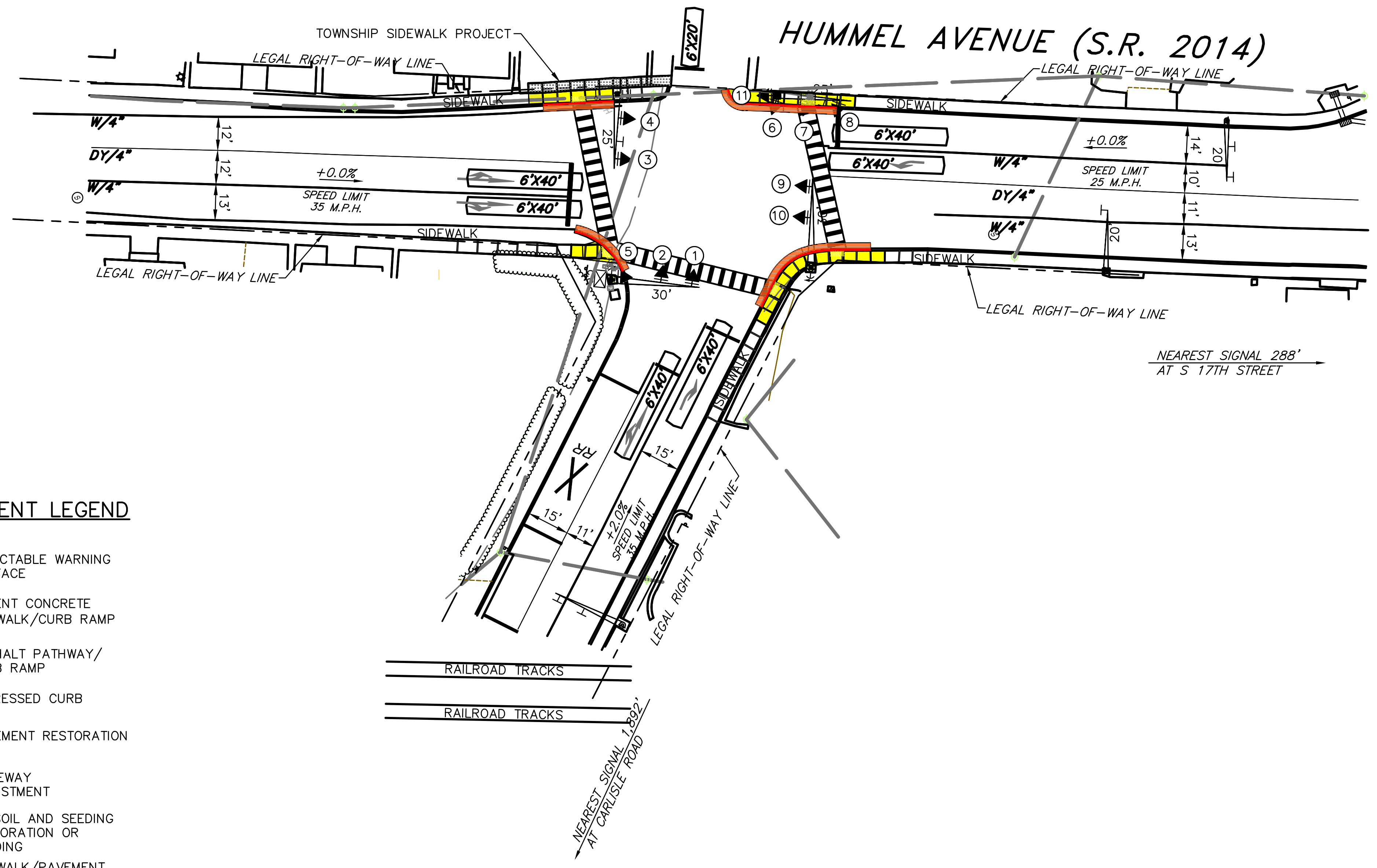


DISTRICT	COUNTY	ROUTE	SECTION	SHEET
10-0	CUMBERLAND	-	-	# OF 1
LOWER ALLEN TOWNSHIP				
REVISION NUMBER	REVISIONS	DATE	BY	

LOWER ALLEN TOWNSHIP – RTP GRANT PUBLIC DISPLAY



- LUMINAIRE
- CONDUIT
- MAST ARM
- STRAIN POLE
- PEDESTAL
- PHASE NUMBER
- VIDEO DETECTOR
- CURB RAMP
- UTILITY POLE
- SIGN
- VEHICULAR SIGNAL HEAD
- PEDESTRIAN SIGNAL HEAD
- PEDESTRIAN PUSHBUTTON/SIGN
- JUNCTION BOX
- CONTROLLER ASSEMBLY
- SOLID WHITE LINE/WIDTH
- BROKEN WHITE LINE/WIDTH
- SOLID YELLOW LINE/WIDTH
- BROKEN YELLOW LINE/WIDTH
- DOUBLE SOLID YELLOW LINE/WIDTH
- LOOP SENSOR

SYMBOL LEGEND

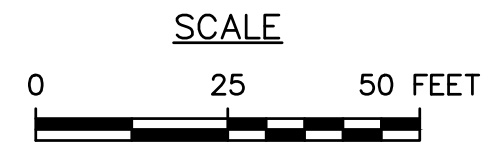
- EXISTING JUNCTION BOX
- EXISTING CLEAN OUT
- EXISTING WATER VALVE
- EXISTING GAS VALVE
- EXISTING MANHOLE
- EXISTING FIRE HYDRANT
- EXISTING STORM INLET
- EXISTING UTILITY POLE
- EXISTING CURB RAMP IDENTIFIER
- EXISTING ELEVATION
- EXISTING SLOPE
- PROPOSED ELEVATION
- PROPOSED SLOPE
- EXISTING SLOPE

SYMBOL LEGEND

- TW - TOP OF WALL (EXCLUDING CAPS)
- BW - BOTTOM OF WALL
- TS - TOP OF SLAB

PAVEMENT LEGEND

- DETECTABLE WARNING SURFACE
- CEMENT CONCRETE SIDEWALK/CURB RAMP
- ASPHALT PATHWAY/CURB RAMP
- DEPRESSED CURB
- PAVEMENT RESTORATION
- DRIVEWAY ADJUSTMENT
- TOPSOIL AND SEEDING RESTORATION OR SODDING
- SIDEWALK/PAVEMENT REMOVAL - GRASS RESTORATION
- VARIABLE DEPTH MILL AND WEARING COURSE OVERLAY
- SIDEWALK BY OTHERS



Q: |PA-CAMP-MC\MCM\Projects\LOWERAL1\922761.11 RTP Grant\dwg\Hummel 18 Survey\406-2201-18TH-STREET_2022.11.14\761PDSP01.dwg



415 FALLOWFIELD ROAD
SUITE 301
CAMP HILL, PA 17011
PH: (717) 975-0295
FAX: (717) 975-0294

DESIGN BY: APK
DRAWN BY: APK
CHECKED BY: -
JOB NO: 922761
DWG: 761PDSP01
DATE: 02/21/23

LOWER ALLEN TOWNSHIP
2233 GETTYSBURG ROAD
CAMP HILL, PA, 17011
(717) 975-7575

18TH STREET AND HUMMEL AVENUE INTERSECTION
S.R. 2033 AND S.R. 2014
LOWER ALLEN TOWNSHIP
CUMBERLAND COUNTY

PUBLIC PLAN DISPLAY